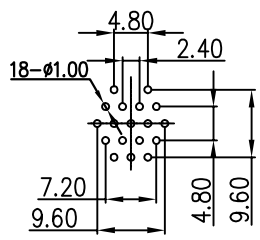
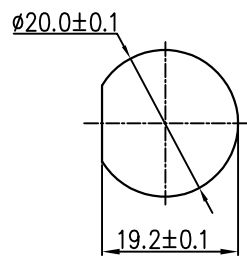


REV.	ECN NO.	DESCRIPTION	SIGN	DATE
C1	N/A	INITIAL DRAWING	Liu	2020/05/13

THIS INFORMATION IS CONFIDENTIAL AND IS DISCLOSED TO YOU ON CONDITION THAT NO FURTHER DISCLOSURE IS MADE BY YOU TO OTHER THAN CHOGORI PERSONNEL WITHOUT AUTHORIZATION FROM CHOGORI CORP.

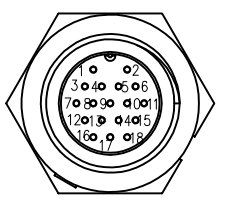


18 Pin
PCB Layout



Recommended Panel Cut-Out

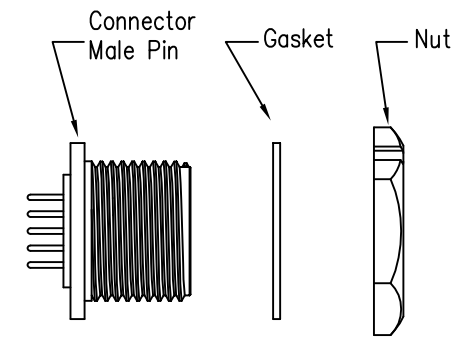
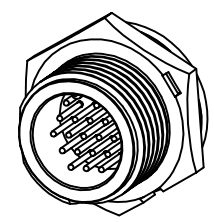
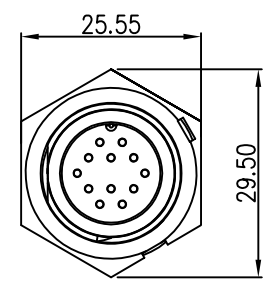
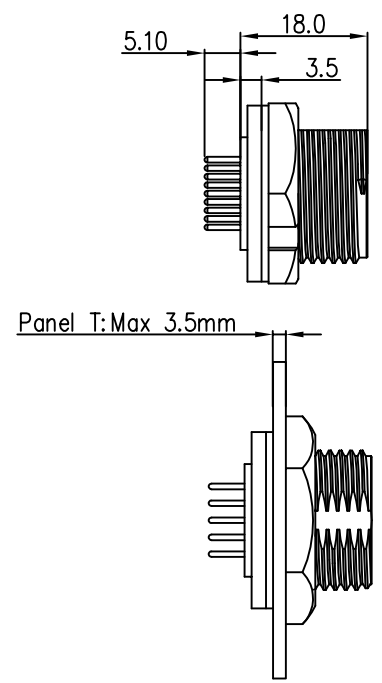
23XXX515-02
Pin Number



18 Pin

P/N: 23018515-02

Pin Assignments
Front View



Specification:

- 1.Operation Temperature: -45°C~105°C.
- 2.Insulation Resistance:100MΩ at DC500V.
- 3.Contact Resistance:<10mΩ.
- 4.Withstand Voltage: 1000V AC
- 5.Operating Current: 2A
- 6.Operating Voltage:DC 30V
- 7.Waterproof Rate:IP67 (Mated)
- 8.Housing:Nylon, Black
- 9.Male Pin:Copper Alloy, Gold Plated
- 10.Gasket:Silicon Gray
- 11.Panel Nut:Nylon, Black
- 12.Torque Rate:0.8~1.0N·m
- 13.RoHS Compliant.
- 14.Mating Cap P/N:806-00021-00

UNIT:mm	
TOLERANCE	
.X	±0.25
.XX	±0.15
.XXX	±0.05
ANGLES	±1°

DESCRIPTION Middle Series Screw Type Front Mount With Male Pin			
SCALE:	1:1	SHEET	1 OF 1
REV.	C1	SIZE	A4
* :Inspection Item			



PART NO	23018515-02	DRAWN BY	Liu	DATE	2020/05/17
DWG NO		CHECKED BY	Mo	DATE	2020/05/17
CUSTOMER		APPROVED BY	Panson	DATE	2020/05/17