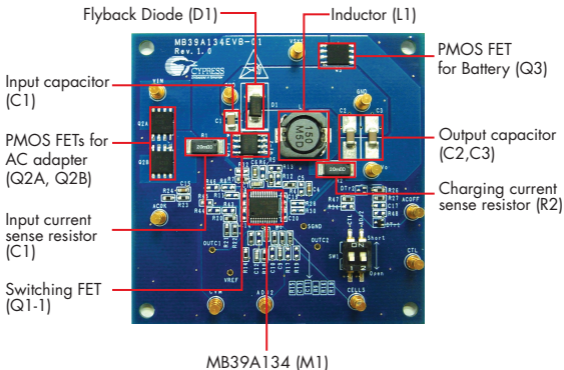


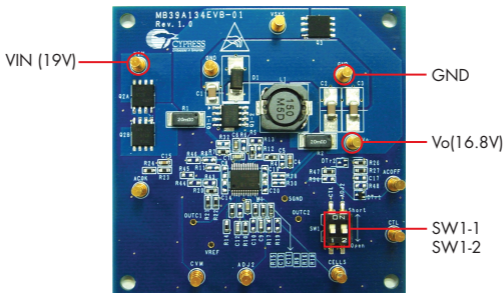
MB39A134EVB-01 CHARGER IC EVALUATION KIT



MB39A134EVB-01 Features:

- Li-ion battery charger board with MB39A134
- Support 2, 3 and 4 cell battery pack
- Input voltage range: 17.7V to 25V
- Input current: 6A (Typ)
- Charging current: up to 2.85A
- Switching frequency: 300 kHz (Typ)
- Size: 6.5 cm x 6.5 cm

MB39A134EVB-01 CHARGER IC EVALUATION KIT



Setup*

- 1 Turn off SW1-1 and SW1-2.
- 2 Connect VIN to a power supply and GND to the ground.
- 3 Connect Vo to a voltmeter.

Check*

- 1 Turn on SW1-1.
- 2 Apply 19V to VIN.
- 3 Vo voltage should be 16.8V (typ).

*Do not supply power to VIN until setting is completed.

For the latest information about this kit and hardware files, visit www.cypress.com/products/battery-charger-ics