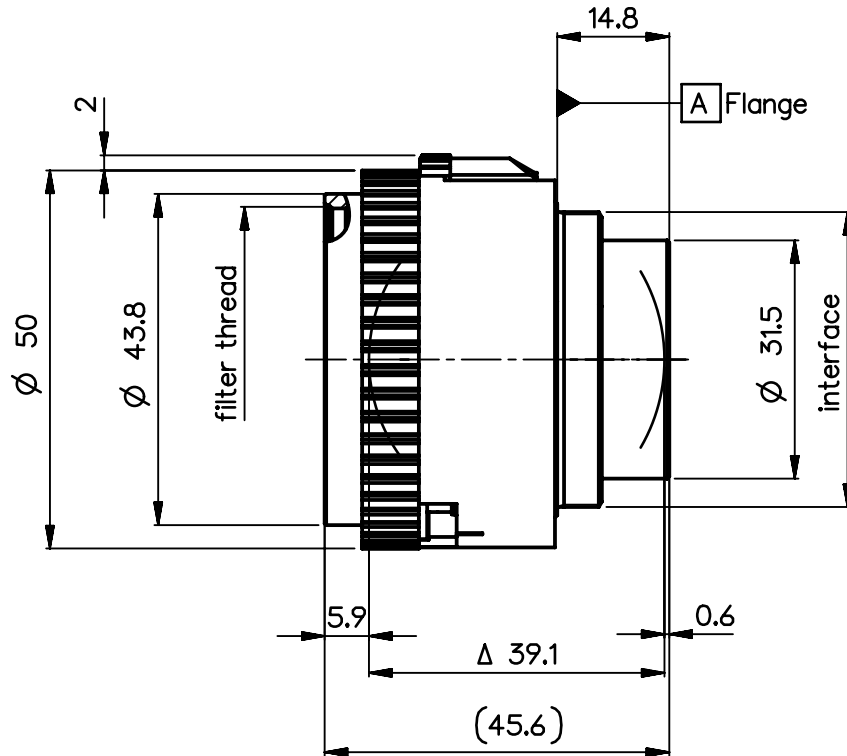
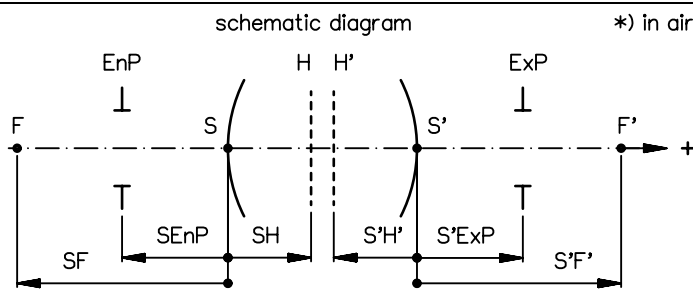


order number	lens name
0701-349-000-40	Apo-Rodagon-N 2.8/50



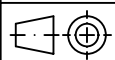
Specification		ON	7509-9021
image circle max. (mm)	44	working distance (mm)	122 - 1025
focal length f' (mm) *	50.2	interface	M39 x1/26" (Leica)
magnification β' [range]	-0.1 [-0.5 ... -0.05]	filter thread	M40.5 x0.5
spectral range λ (nm)	400 - 750	weight (g)	125



design includes CCD cover glass:		no		
SF (mm)	-27.2	f-stop	\varnothing EnP	\varnothing Exp
S'F' (mm) *	31.8	2.8	17.1	18.0
HH' (mm) *	-2.3	4	12.5	13.1
SH (mm)	23.0	5.6	8.9	9.4
S'H' (mm) *	-18.4	8	6.2	6.6
S'EnP (mm)	20.6	11	4.5	4.8
S'Exp (mm) *	-21.0	16	3.1	2.3

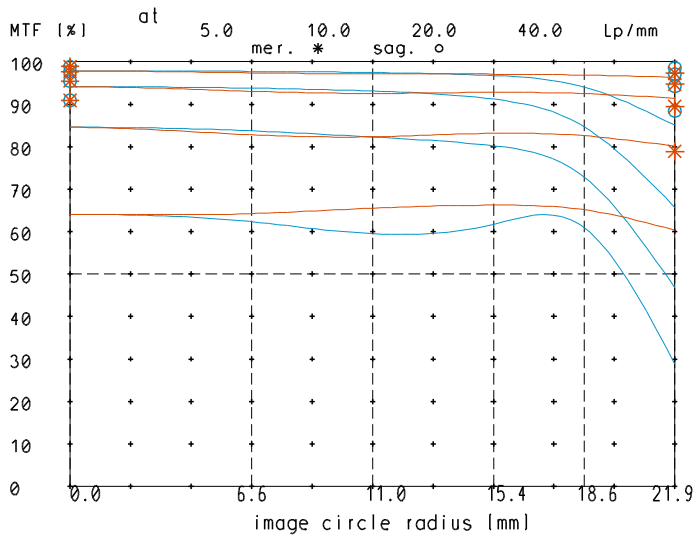
NX PROTECTIVE NOTE "DIN ISO 16016" TO BE OBSERVED	EU-D	AL-T1A	US-D	US-ML	not export controlled	
	REV	ECC	DATE	APPROVED	PDM Status	
	b	Neue Urz.			Freigabe	-
	c	+AP+EP	08.05.98	Roesl	SCALE	1:1
	d	08-281	30.09.08	Strozew	MATERIAL	
e	14-0184	18.08.14	Schiffe	TITLE	Apo-Rodagon-N 2.8/50	
				BASIC TOLERANCING PRINCIPLE	ISO 8015	
				FIRST ISSUE	26.05.08 Strozews	
				CHKD	26.05.08 Schaeffler	
				DRAWING NO.	0701-349-100-40-0001e	
				REPLACES		
				SHEET	1	
				OF	1	

ALL DIMENSIONS ARE IN MM AND INCLUDE SURFACE TREATMENT

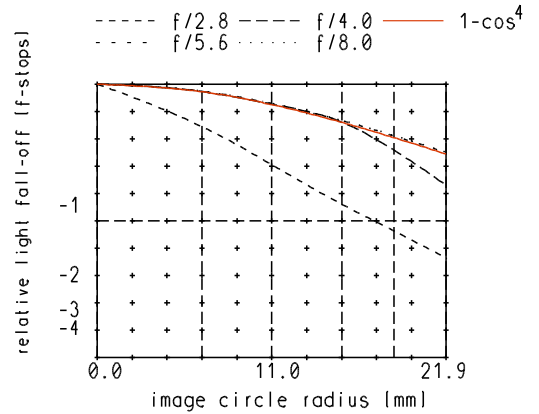


Apo-Rodagon-N₂.8/50

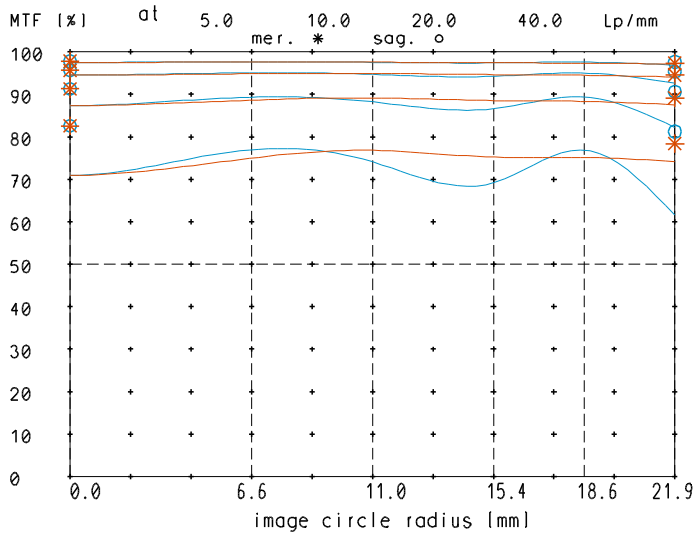
MTF at ratio 0.1x f/ 2.8



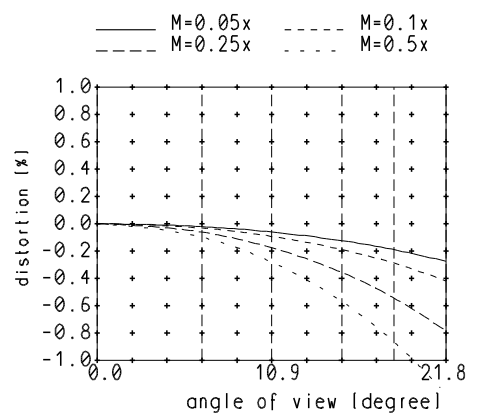
relative light fall-off at ratio 0.1x



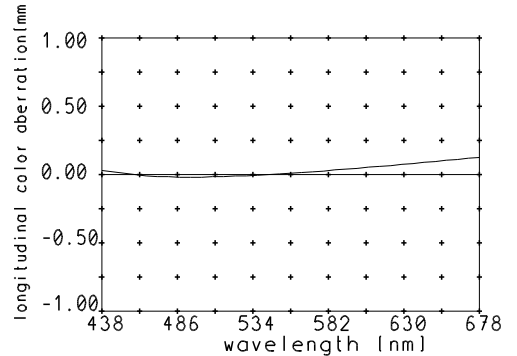
MTF at ratio 0.1x f/ 5.6



Distortion at ratio 0.05x to 0.5x



Longitudinal color aberration at ratio 0.1x



— sagittal. o Diffraction limited value
— meridional * Diffraction limited value

Named frequencies (line pairs/mm) in modular transfer function (MTF) as well as diagrams of relative light fall-off, distortion and longitudinal color aberration refer to film plane.