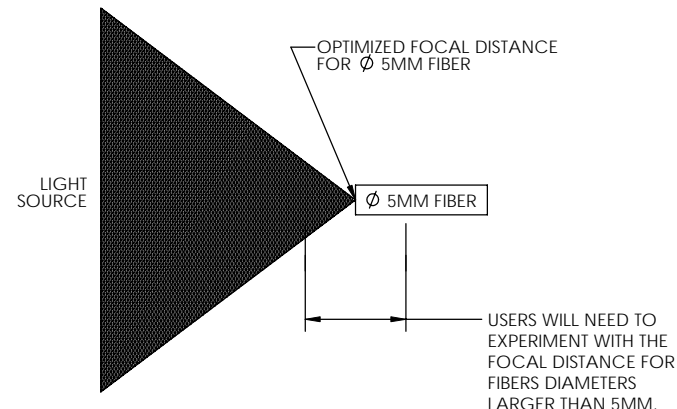
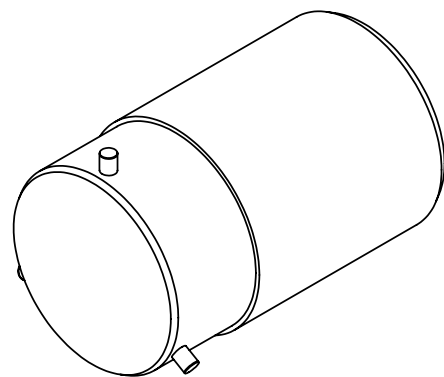
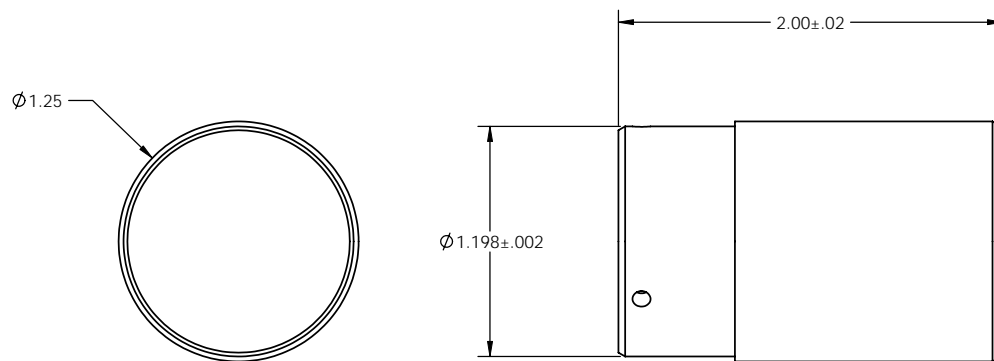


REVISIONS					
REV.	DESCRIPTION	ECO	DATE	DRWN	APPD
A	RELEASE TO PRODUCTION.	1418	12/01/09	SC	JAS

ADAPTOR BLANK (SEE NOTES AND SHEET 2 FOR SUGGESTED MODIFICATIONS)



MODIFY ADAPTOR BLANK SO DISTAL END OF FIBER IS POSITIONED AT THE PROPER LOCATION. USE NOTES 1 THRU 5 IN CONJUNCTION WITH EXAMPLES ON SHEET 2 FOR GUIDANCE.

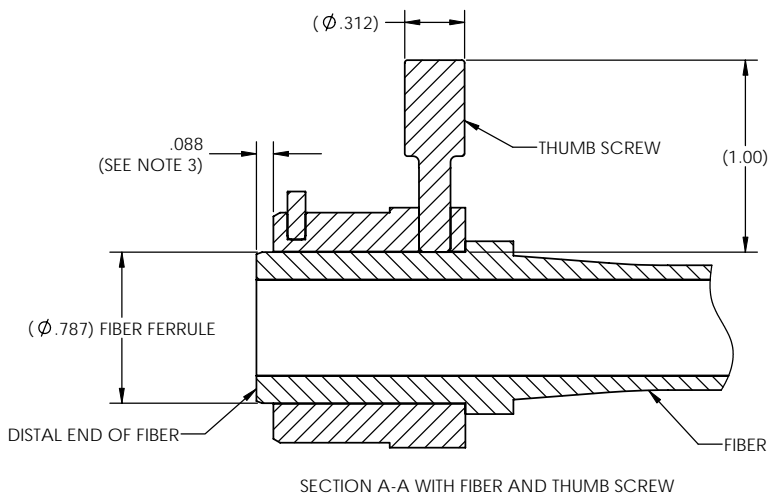
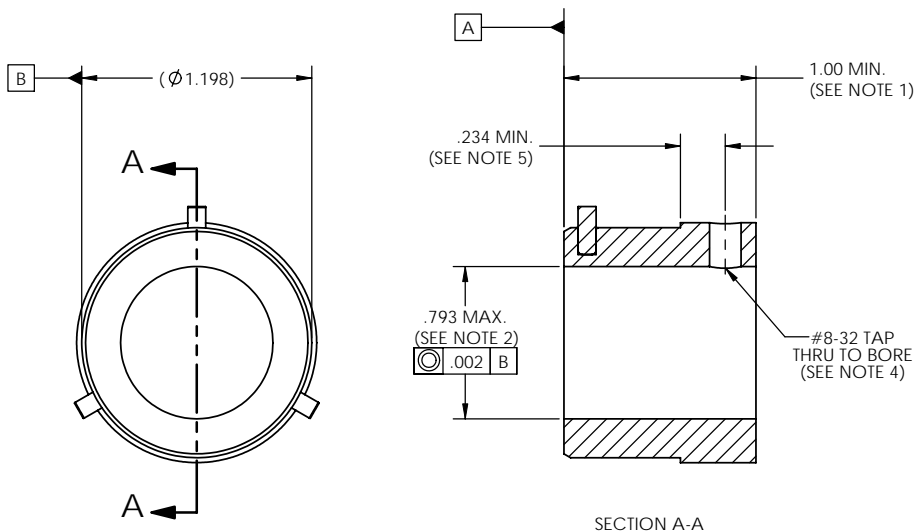
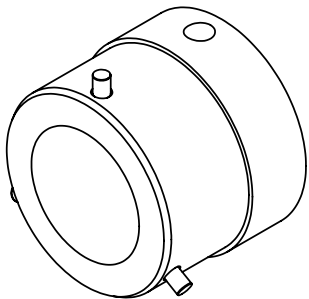
- NOTES:
1. MINIMUM LENGTH OF ADAPTOR IS 1.00", SEE EXAMPLE #1 ON SHEET 2.
 2. MAXIMUM ADAPTOR OPENING FOR DISTAL END OF FIBER FERRULE IS .793", SEE EXAMPLE #1 ON SHEET 2.
 3. DISTAL END OF FIBER MUST BE POSITIONED AT .088" PAST THE END OF ADAPTOR FOR 5MM DIAMETER FIBER. WHEN USING LARGER FIBERS IT MAY BE NECESSARY TO ADJUST THE POSITION OF THE FIBER FURTHER AWAY OR CLOSER TO THE LIGHT SOURCE TO ACHIEVE DESIRED UNIFORMITY AND INTENSITY. SEE LIGHT SOURCE ILLUSTRATION AND EXAMPLES ON SHEET 2.
 4. ADD #8-32 TAP FOR THUMB SCREW IN LINE WITH DOWEL PIN.
 5. MINIMUM #8-32 TAP LOCATION FROM EDGE.
 6. ADAPTOR SUPPLIED WITH THUMB SCREW (P/N: 64MT-0091), SEE SHEET 2 FOR DETAILS.

LIGHT SOURCE ILLUSTRATION

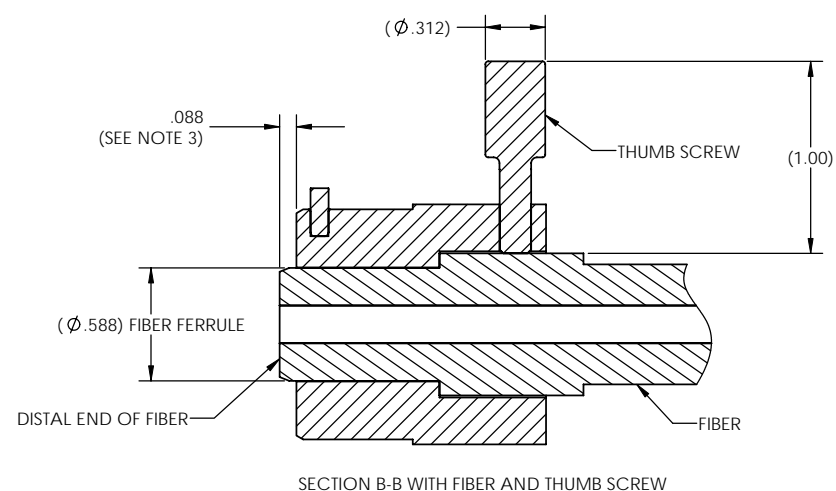
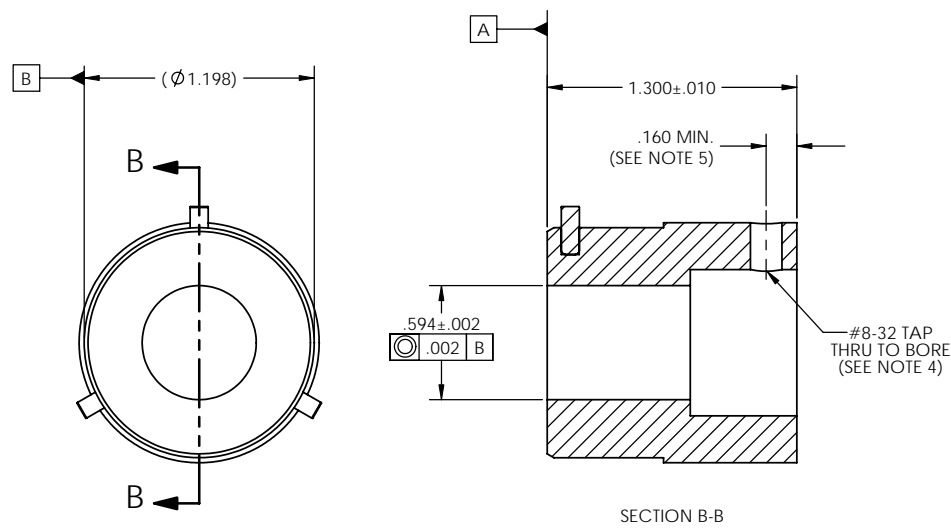
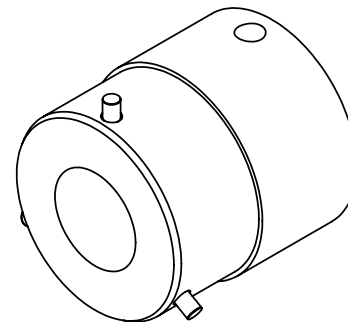
PROPRIETARY AND CONFIDENTIAL
 THE INFORMATION CONTAINED IN THIS DRAWING IS THE SOLE PROPERTY OF PERKINELMER, INC. ANY REPRODUCTION IN PART OR AS A WHOLE WITHOUT THE WRITTEN PERMISSION OF PERKINELMER, INC. IS PROHIBITED.

UNLESS OTHERWISE SPECIFIED:		NAME	DATE	PERKINELMER INC. 160 E. Marquardt Drive, Wheeling IL 60090	
DIMENSIONS ARE IN INCHES TOLERANCES:		DRAWN	SC	07/08/09	TITLE: MACHINING INSTRUCTIONS FOR ADAPTOR BLANK
ANGULAR: ± 1 DEG		CHECKED	JAS	07/21/09	
TWO PLACE DECIMAL ± 0.10		ENG APPR	JAS	12/01/09	
THREE PLACE DECIMAL ± 0.05					SIZE DWG. NO. REV C 64MT-0535-13 A
PERKINELMER COATING TOLERANCING PER: ASME Y14.3M 1994		COMMENTS:			
MATERIAL:	6061 ALUMINUM	FINISH:	CLEAR ANODIZED	SCALE: 2:1 WEIGHT: SHEET 1 OF 2	
NEXT ASSY:	USED ON:	APPLICATION:		DO NOT SCALE DRAWING	

EXAMPLE #1



EXAMPLE #2



<small>PROPRIETARY AND CONFIDENTIAL</small> <small>THE INFORMATION CONTAINED IN THIS DRAWING IS THE SOLE PROPERTY OF PERKINELMER INC. ANY REPRODUCTION IN PART OR AS A WHOLE WITHOUT THE WRITTEN PERMISSION OF PERKINELMER INC. IS PROHIBITED.</small>			
<small>PERKINELMER INC.</small> <small>160 E. Marquardt Drive, Wheeling IL 60090</small>	<small>SIZE</small> C	<small>DWG. NO.</small> 64MT-0535-13	<small>REV</small> A
<small>SCALE: 2:1</small>	<small>WEIGHT:</small>	<small>SHEET 2 OF 2</small>	