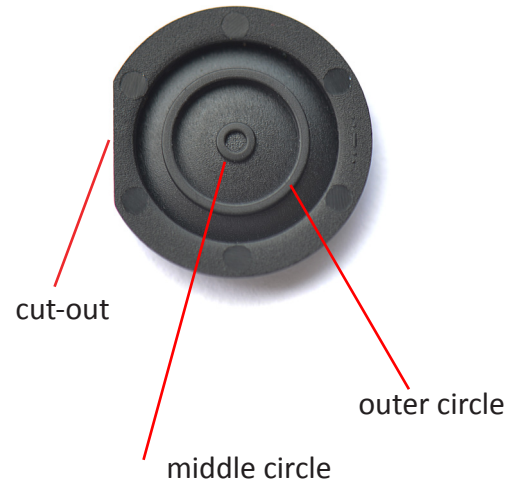


We hereby inform you that the 10G cap has been changed.  
From now on all orders of 10G will be delivered in the new design.

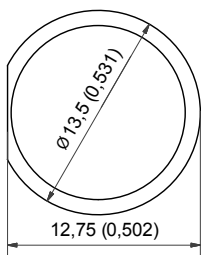
The circle in the middle of the back was added to provide a crisper sound and feel when using 10G cap with Ultramec 6C. The outer circle was added so that when the cap is pushed the circle will rest on top of the metal lid of the switch and provide protection against overtravel.

The cut-out was reduced to secure that when using the cap with LEDs on the PCB there is no illumination bleed in between the panel and the cap.

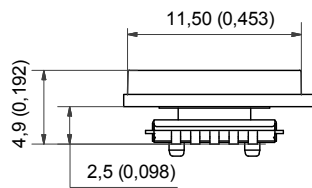
Picture 1.



Drawing 1.



Drawing 2.



Drawing 3.

