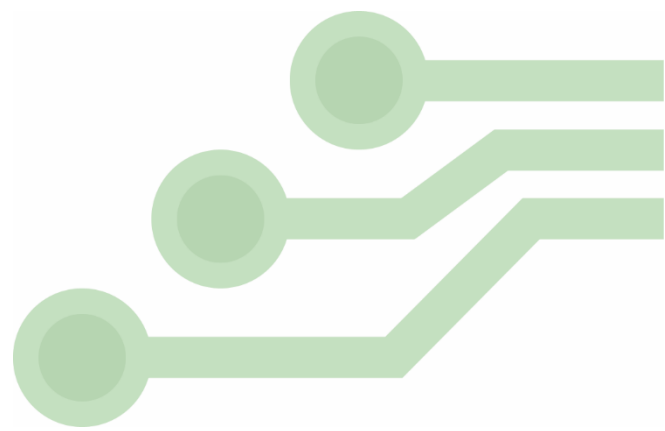


2661 Galvin Court
Elgin, IL 60124, USA

847.844.8795

nhtech@newhavendisplay.com



January 14th, 2020

Engineering Change Notification

To: All Relevant Customers

From: Newhaven Display Quality

This notice is to inform you of a change to the following products:

NHD-5.0-800480TF-ATXL#
NHD-5.0-800480TF-ATXL#-T
NHD-5.0-800480TF-ATXL#-CTP
NHD-5.0-800480TF-ATXL#-CTPK_RevA
NHD-5.0-800480TF-ATXL#-CTP-R19
NHD-5.0-800480TF-ATXL-CTPME
NHD-5.0-800480TF-ATXL#-TR17

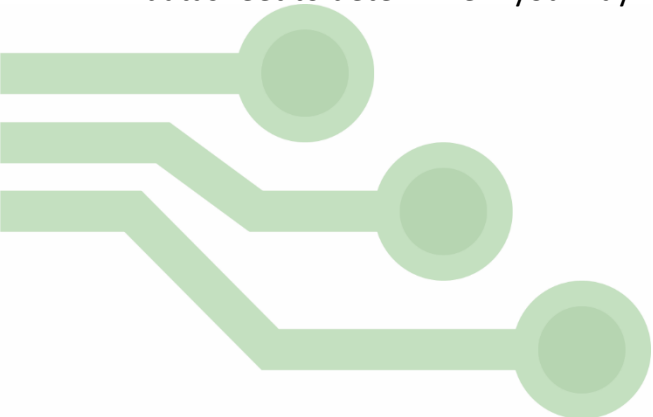
The glass panel and driver IC used in manufacturing of these displays are no longer available. Affected models will now be manufactured using an equivalent glass panel and driver IC. Display FPC has also been redesigned based on the electrical and mechanical requirements of the new glass panel and driver IC.

Driver IC Change:

Old Driver IC Datasheet: [ILI6126C](#)

New Driver IC Datasheet: [ILI6122](#)

The new driver IC has slightly different display timing characteristics. Please review the ILI6122 datasheet to determine if you may need to update the display timing in your software.



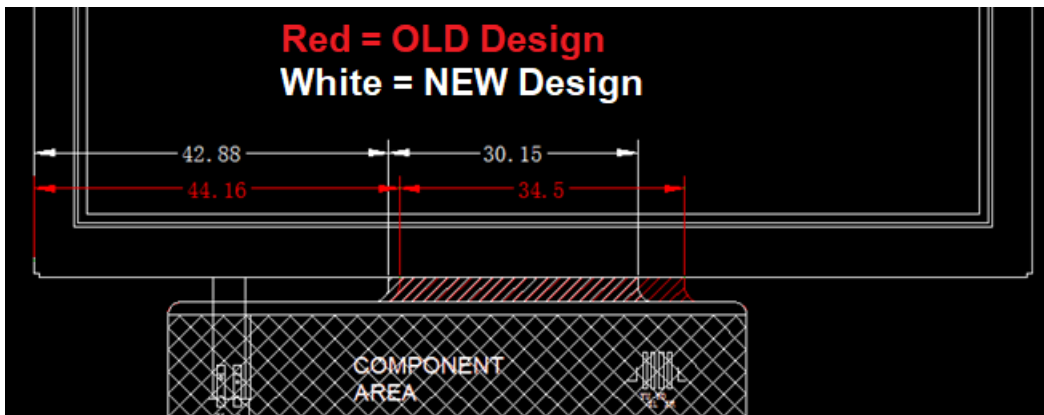
Glass Panel Change:

The new glass panel delivers improved optical characteristics. See comparison below.

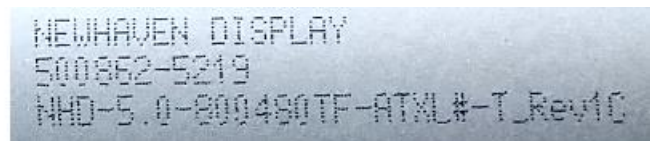
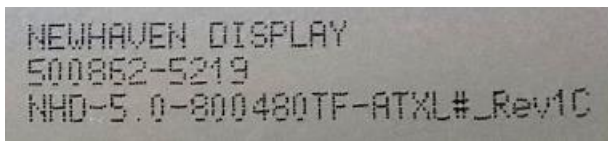
	OLD NHD-5.0-800480TF-ATXL#	NEW NHD-5.0-800480TF-ATXL#
Display Contrast	350	500
Display Luminance	500 cd/m ²	620 cd/m ²

FPC Change:

FPC width directly below the glass bonding area has been revised. See comparison below.



The new version of these displays will be marked with “Rev1C” suffix at the end of the base display part number printed on the back bezel. See examples below.





We understand that every customer's application is unique, and therefore recommend you test and validate samples of the updated design.

Please visit www.newhavendisplay.com or email nhtech@newhavendisplay.com for further information or assistance with this change.