



PRODUCT CHANGE NOTIFICATION (PCN)

ISSUE DATE: 25/4/2022
MODIFICATION / REVISION DATE: 25/4/2022

AMJS1010-0030-BKB-26 MODULAR CABLE

CHANGE NOTIFICATION: PCN 20220425_AMJS1010-0030-BKB-26

DESCRIPTION OF CHANGES: CHANGE OF DATA SHEET
CHANGE OF DATA SHEET
New Draw.-No. ASS_7943_CArev02

REASON FOR CHANGE: CHANGE OF PRODUCT LOCATION
CHANGE OF PRODUCT LOCATION

KEY CHARACTERISTICS OF CHANGE: Details see page 3

PRODUCTS AFFECTED: AMJS1010-0030-BKB-26

DATE OF CHANGE AND IMPLEMENTATION: CHANGE: WEEK 18 / YEAR 2022
IMPLEMENTATION: 25/4/2022

RESPONSE: NO RESPONSE TO THIS NOTIFICATION IS REQUIRED

PCN REVISION HISTORY:

DATE OF REVISION: 25/4/2022

REVISION NUMBER: 00

page 1/



Auf dem Schüffel 1
D-58513 Lüdenscheid
Tel.: +49-2351 - 554-200
Fax: +49 (2351) 554-861
info@assmann-wsw.com
www.assmann-wsw.com

PRODUCT CHANGE NOTIFICATION (PCN)

ISSUE DATE: 25/4/2022
MODIFICATION / REVISION DATE: 25/4/2022

REFERENCE DOCUMENTS / ATTACHMENTS:
DOCUMENT: DRAWING

ASSMANN WSW P/N	Drawing Number		ASSMANN WSW P/N	Drawing Number
AMJS1010-0030-BKB-26	ASS_7943_CArev01	↔	AMJS1010-0030-BKB-26	ASS_7943_CArev02

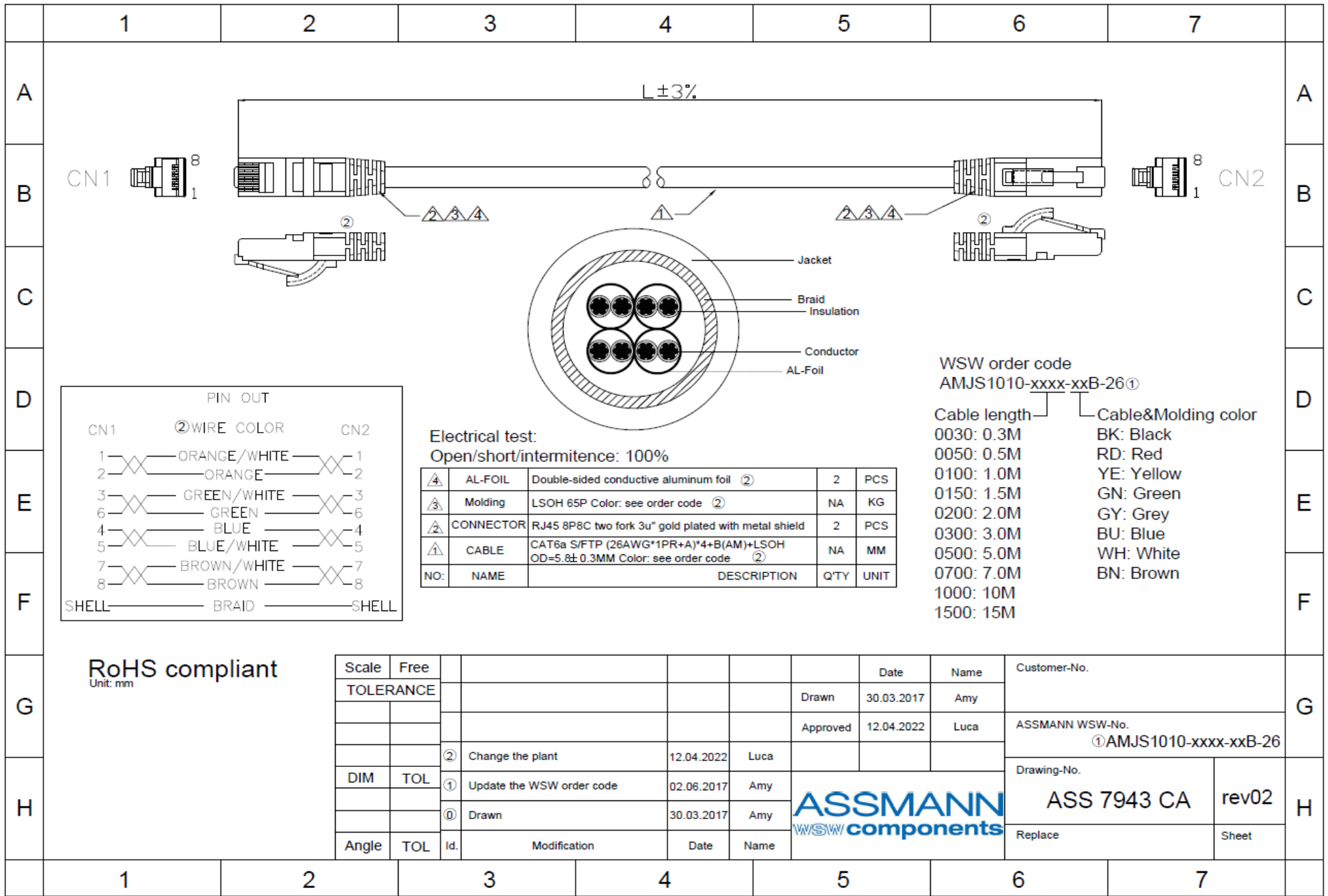


Auf dem Schüffel 1
 D-58513 Lüdenscheid
 Tel.: +49-2351 - 554-200
 Fax +49 (2351) 554-861
 info@assmann-wsw.com
 www.assmann-wsw.com

PRODUCT CHANGE NOTIFICATION (PCN)

ISSUE DATE: 25/4/2022
 MODIFICATION / REVISION DATE: 25/4/2022

AMJS1010-0030-BKB-26	OLD VERSION	AMJS1010-0030-BKB-26	NEW VERSION																																													
<p>Appearance</p>		<p>Appearance</p>																																														
<p>BOM</p> <table border="1"> <thead> <tr> <th>NO:</th> <th>NAME</th> <th>DESCRIPTION</th> <th>Q'TY</th> <th>UNIT</th> </tr> </thead> <tbody> <tr> <td>③</td> <td>Molding</td> <td>LSOH PVC 45P Color: see order code</td> <td>NA</td> <td>KG</td> </tr> <tr> <td>②</td> <td>CONNECTOR</td> <td>RJ45 8P8C two fork 3u" gold plated with metal shield</td> <td>2</td> <td>PCS</td> </tr> <tr> <td>①</td> <td>CABLE</td> <td>CAT6a S/FTP (26AWG*1PR+A)*4+B+LSOH OD=5.8±0.3MM Color: see order code</td> <td>NA</td> <td>MM</td> </tr> </tbody> </table>		NO:	NAME	DESCRIPTION	Q'TY	UNIT	③	Molding	LSOH PVC 45P Color: see order code	NA	KG	②	CONNECTOR	RJ45 8P8C two fork 3u" gold plated with metal shield	2	PCS	①	CABLE	CAT6a S/FTP (26AWG*1PR+A)*4+B+LSOH OD=5.8±0.3MM Color: see order code	NA	MM	<p>BOM</p> <table border="1"> <thead> <tr> <th>NO:</th> <th>NAME</th> <th>DESCRIPTION</th> <th>Q'TY</th> <th>UNIT</th> </tr> </thead> <tbody> <tr> <td>△</td> <td>AL-FOIL</td> <td>Double-sided conductive aluminum foil ②</td> <td>2</td> <td>PCS</td> </tr> <tr> <td>△</td> <td>Molding</td> <td>LSOH 65P Color: see order code ②</td> <td>NA</td> <td>KG</td> </tr> <tr> <td>△</td> <td>CONNECTOR</td> <td>RJ45 8P8C two fork 3u" gold plated with metal shield</td> <td>2</td> <td>PCS</td> </tr> <tr> <td>△</td> <td>CABLE</td> <td>CAT6a S/FTP (26AWG*1PR+A)*4+B(AM)+LSOH OD=5.8±0.3MM Color: see order code ②</td> <td>NA</td> <td>MM</td> </tr> </tbody> </table>		NO:	NAME	DESCRIPTION	Q'TY	UNIT	△	AL-FOIL	Double-sided conductive aluminum foil ②	2	PCS	△	Molding	LSOH 65P Color: see order code ②	NA	KG	△	CONNECTOR	RJ45 8P8C two fork 3u" gold plated with metal shield	2	PCS	△	CABLE	CAT6a S/FTP (26AWG*1PR+A)*4+B(AM)+LSOH OD=5.8±0.3MM Color: see order code ②	NA	MM
NO:	NAME	DESCRIPTION	Q'TY	UNIT																																												
③	Molding	LSOH PVC 45P Color: see order code	NA	KG																																												
②	CONNECTOR	RJ45 8P8C two fork 3u" gold plated with metal shield	2	PCS																																												
①	CABLE	CAT6a S/FTP (26AWG*1PR+A)*4+B+LSOH OD=5.8±0.3MM Color: see order code	NA	MM																																												
NO:	NAME	DESCRIPTION	Q'TY	UNIT																																												
△	AL-FOIL	Double-sided conductive aluminum foil ②	2	PCS																																												
△	Molding	LSOH 65P Color: see order code ②	NA	KG																																												
△	CONNECTOR	RJ45 8P8C two fork 3u" gold plated with metal shield	2	PCS																																												
△	CABLE	CAT6a S/FTP (26AWG*1PR+A)*4+B(AM)+LSOH OD=5.8±0.3MM Color: see order code ②	NA	MM																																												
<p>FOR DETAIL, PLEASE TAKE ATTACHED NEW DRAWING: FOR REFERENCE</p>																																																



PIN OUT

CN1	② WIRE COLOR	CN2
1	ORANGE/WHITE	1
2	ORANGE	2
3	GREEN/WHITE	3
6	GREEN	6
4	BLUE	4
5	BLUE/WHITE	5
7	BROWN/WHITE	7
8	BROWN	8
SHELL	BRAID	SHELL

Electrical test:
Open/short/intermittence: 100%

④	AL-FOIL	Double-sided conductive aluminum foil ②	2	PCS
③	Molding	LSOH 65P Color: see order code ②	NA	KG
③	CONNECTOR	RJ45 8P8C two fork 3u" gold plated with metal shield	2	PCS
③	CABLE	CAT6a S/FTP (26AWG*1PR+A)*4+B(AM)+LSOH OD=5.8±0.3MM Color: see order code ②	NA	MM
NO:	NAME	DESCRIPTION	Q'TY	UNIT

WSW order code
AMJS1010-xxxx-xxB-26①

Cable length

0030: 0.3M	Cable&Molding color
0050: 0.5M	BK: Black
0100: 1.0M	RD: Red
0150: 1.5M	YE: Yellow
0200: 2.0M	GN: Green
0300: 3.0M	GY: Grey
0500: 5.0M	BU: Blue
0700: 7.0M	WH: White
1000: 10M	BN: Brown
1500: 15M	

RoHS compliant
Unit: mm

Scale	Free					Date	Name	Customer-No.
TOLERANCE						Drawn	30.03.2017	Amy
						Approved	12.04.2022	Luca
		②	Change the plant	12.04.2022	Luca			
DIM	TOL	①	Update the WSW order code	02.06.2017	Amy	ASSMANN <small>WSW components</small>		
		①	Drawn	30.03.2017	Amy			
Angle	TOL	Id.	Modification	Date	Name			

ASSMANN WSW-No. ①AMJS1010-xxxx-xxB-26	
Drawing-No. ASS 7943 CA	rev02
Replace	Sheet