

Product Change Notification

PCN-PCC-243-2017

Business Unit	Product Line Code	Type of Change	Action	Date of Issue
PCC - PCB Connectors	AAB	Product Change Notification	Notify Distributors and Field	2/3/2017

The following Phoenix Contact products have been modified. Existing specifications will be met or exceeded. Please review and acknowledge this document and inform your personnel as needed.

Description for Product Change Notification
<p>An additional screw brake has been added. Three plastic fins are inserted in the screw shaft to prevent the closing of the clamping space during transportation. Dimensions and technical data remain the same. During the conversion period both versions will be delivered depending on the inventory. The following part numbers are also affected:</p> <ul style="list-style-type: none"> 1703665 1703666 1703620 1703667 1703668 1938265 1723379 1938278 1711599

Stock Status
Can existing stock still be used? Yes
Is mixture of stock acceptable? No

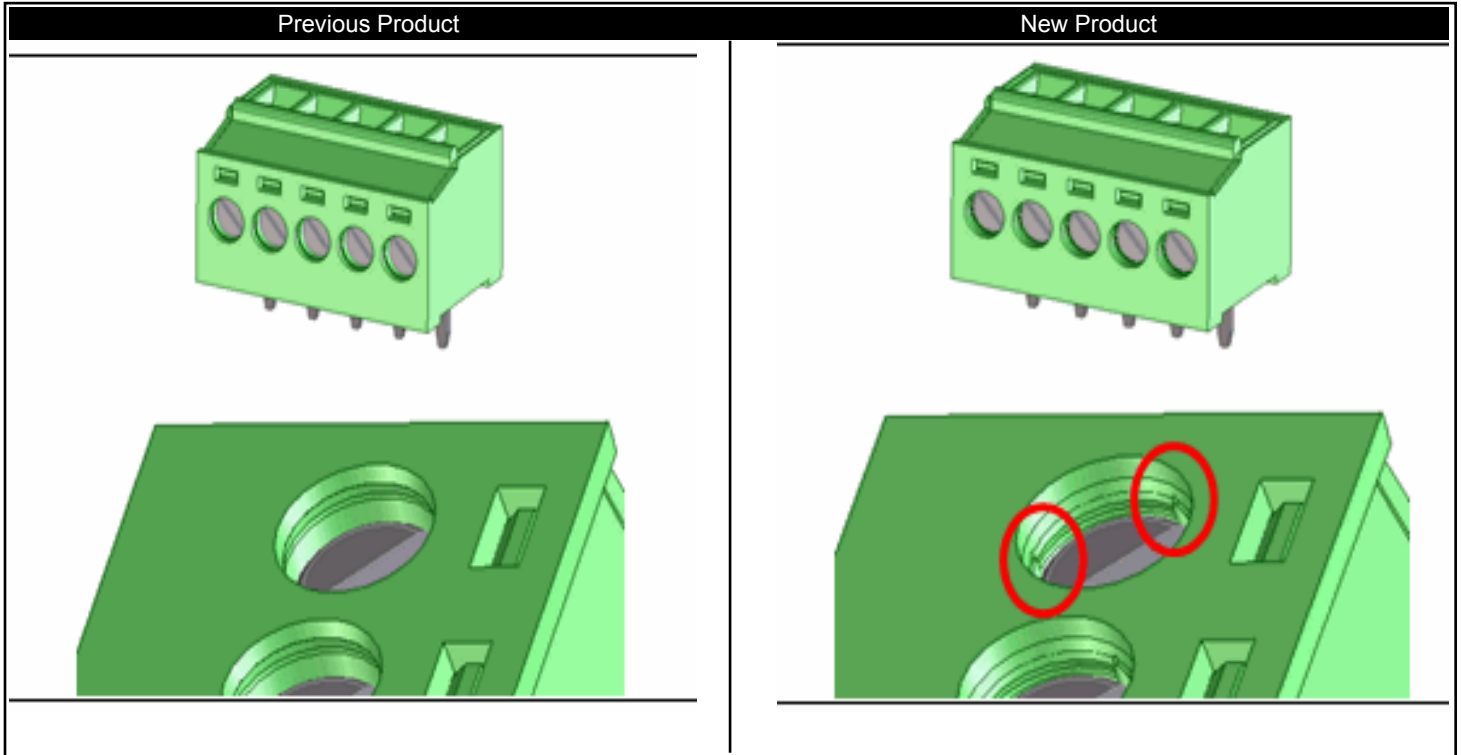
Transaction Dates	
Date modification goes into effect from Germany:	2/3/2017
Expected first shipment (from Phoenix Contact) of the modified products(s):	1/2/2017



PHOENIX CONTACT
INSPIRING INNOVATIONS

Phoenix Contact Inc.
P.O. BOX 4100
Harrisburg, PA 17111-0100
Phone: 717-944-1300
Fax: 717-944-1625

Product Change Notification



Should you have any issues with the timeline or content of this product change, please contact Phoenix Contact using the information below. Customers should acknowledge receipt of the PCN within 30 days of delivery of the PCN; provided, however, that the failure to acknowledge receipt does not affect the product change or the effective date thereof.

Contact Info:

Harold McKee
hmckee@phoenixcon.com

Thank you,

James Dunbar

Product Marketing Manager PCC



Phoenix Contact Inc.
P.O. BOX 4100
Harrisburg, PA 17111-0100
Phone: 717-944-1300
Fax: 717-944-1625

Product Change Notification

Part #	Type Description
1703661	DFK-PC 16/ 7-STF-SH-10,16
1868128	MKDSFW 1,5/ 2-3,5
1868131	MKDSFW 1,5/ 3-3,5
1868144	MKDSFW 1,5/ 4-3,5
1703012	MKDSFW 1,5/ 4-3,5 BDQ:4-1
1868157	MKDSFW 1,5/ 5-3,5
1868160	MKDSFW 1,5/ 6-3,5
1868173	MKDSFW 1,5/ 7-3,5
1868186	MKDSFW 1,5/ 8-3,5
1868199	MKDSFW 1,5/ 9-3,5
1868209	MKDSFW 1,5/10-3,5
1868212	MKDSFW 1,5/11-3,5
1868225	MKDSFW 1,5/12-3,5
5606034	MKDSFW 1.5/7-3.5 PRINTED
1703629	DFK-PC 16/ 3-STF-SH-10,16