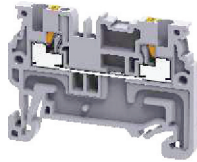


# CP SERIES

PUSH-IN TECHNOLOGY

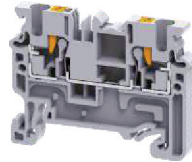
## SINGLE LEVEL FEED THROUGH TERMINAL BLOCKS

### CP1.5



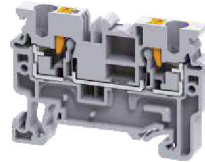
2 Connection Feed-Through  
2 Jumper Channels

### CP2.5



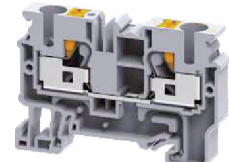
2 Connection Feed-Through  
2 Jumper Channels

### CP4



2 Connection Feed-Through  
2 Jumper Channels

### CP6/10



2 Connection Feed-Through  
2 Jumper Channels

### Dimensions & Weight

Width / Length	3.5 mm / 45.3 mm	5 mm / 49.7 mm	6 mm / 54.8 mm	8 mm / 62.75 mm
Height w DIN Rail	35 x 7.5 mm 35 x 15 mm	32.8 mm 40.3 mm	38.3 mm 45.8 mm	38.3 mm 45.8 mm
Weight per piece	5.6 g	5.6 g	8.0 g	16.4 g

### Technical Data/Ratings

Approvals								
Wire Size (solid / stranded)	<b>24-14 AWG</b>	0.2-1.5 mm <sup>2</sup>	<b>24-12 AWG</b>	0.2-2.5 mm <sup>2</sup>	<b>24-10 AWG</b>	0.2-4.0 mm <sup>2</sup>	<b>20-8 AWG</b>	0.5-10 mm <sup>2</sup>
Voltage Rating	600 V	800V AC/DC	600 V	1000V AC/DC	600 V	1000V AC/DC	600 V	1000V AC/DC
Current Rating	15 A	15 A	20 A	24 A	30 A	32 A	44 A	57 A
Insulation Material	Polyamide 66		Polyamide 66		Polyamide 66		Polyamide 66	

### Installation Instructions

Wire Stripping Length	8 mm	10 mm	11 mm	12 mm
Screwdriver	SCM0.4/2.5 (0.4x2.5 mm blade)	SCM0.5/3.0 (0.5x3.0 mm blade)	SCM0.5/3.0 (0.5x3.0 mm blade)	SCM0.8/4.0 (0.8 x 4.0 mm blade)

Terminal Blocks	Cat. No.	Std. Pk.	Cat. No.	Std. Pk.	Cat. No.	Std. Pk.	Cat. No.	Std. Pk.
<b>Grey (standard)</b>	<b>CP1.5</b>	100	<b>CP2.5</b>	100	<b>CP4</b>	100	<b>CP6/10</b>	100
Red R	CP1.5/R	100	CP2.5/R	100	CP4/R	100	CP6/10/R	100
Blue BU	CP1.5/BU	100	CP2.5/BU	100	CP4/BU	100	CP6/10/BU	100
Black BL	CP1.5/BL	100	CP2.5/BL	100	CP4/BL	100	CP6/10/BL	100
Orange O	CP1.5/O	100	CP2.5/O	100	CP4/O	100	CP6/10/O	100
Green G	CP1.5/G	100	CP2.5/G	100	CP4/G	100	CP6/10/G	100
Yellow Y	CP1.5/Y	100	CP2.5/Y	100	CP4/Y	100	CP6/10/Y	100
White W	CP1.5/W	100	CP2.5/W	100	CP4/W	100	CP6/10/W	100
<b>Ground/ Earth</b>								
Yellow / Green	<b>CPG1.5</b>	100	<b>CPG2.5</b>	100	<b>CPG4</b>	100	<b>CPG6/10</b>	100

Jumpers	Cat. No.	I <sub>max</sub>	Std. Pk.	Cat. No.	I <sub>max</sub>	Std. Pk.	Cat. No.	I <sub>max</sub>	Std. Pk.	Cat. No.	I <sub>max</sub>	Std. Pk.	
Shorting Link/	2 pole	JX1.5/2	16A	100	JX2.5/2	24A	100	JX4/2	32A	100	JX6/2	41A	100
Jumpers	3 pole	JX1.5/3	16A	50	JX2.5/3	24A	50	JX4/3	32A	50	JX6/3	41A	50
	4 pole	JX1.5/4	16A	50	JX2.5/4	24A	50	JX4/4	32A	50	JX6/4	41A	50
	5 pole	-	-	-	JX2.5/5	24A	50	-	-	-	-	-	
	6 pole	-	-	-	JX2.5/6	24A	50	-	-	-	-	-	
	7 pole	-	-	-	JX2.5/7	24A	50	-	-	-	-	-	
	8 pole	-	-	-	JX2.5/8	24A	50	JX4/8	32A	50	-	-	
	10 pole	JX1.5/10	16A	10	JX2.5/10	24A	10	JX4/10	32A	10	JX6/10	41A	10
	16 pole	-	-	-	JX2.5/16	24A	10	JX4/16	32A	10	-	-	
Step Down	4-2.5 mm <sup>2</sup>	-	-	-	JXS4/2.5	32A	50	JXS4/2.5	32A	50	-	-	
Jumpers	6-2.5 mm <sup>2</sup>	-	-	-	JXS6/2.5	41A	50	-	-	-	JXS6/2.5	41A	50
	6-4 mm <sup>2</sup>	-	-	-	-	-	-	JXS6/4	41A	50	JXS6/4	41A	50

Accessories	Cat. No.	Std. Pk.	Cat. No.	Std. Pk.	Cat. No.	Std. Pk.	Cat. No.	Std. Pk.
End Plate	EPCP1.5	50	EPCX2.5	50	EPCX4	50	EPCX6	50
Partition Plate	PPCX4	50	PPCX4	50	PPCX4	50	PPCX10	50
DIN Rail	2511120 CA701-15/S	20 20	2511120 CA701-15/S	20 20	2511120 CA701-15/S	20 20	2511120 CA701-15/S	20 20
End Stop	CA103 / CA104	50	CA103 / CA104	50	CA103 / CA104	50	CA103 / CA104	50
Test Plug			TX2.5	20	-	-	-	-
Marking Tag	MS3.5	1 Pk. (100 tags)	MT5	1 Pk. (100 tags)	MT6	1 Pk. (100 tags)	MT8	1 Pk. (100 tags)