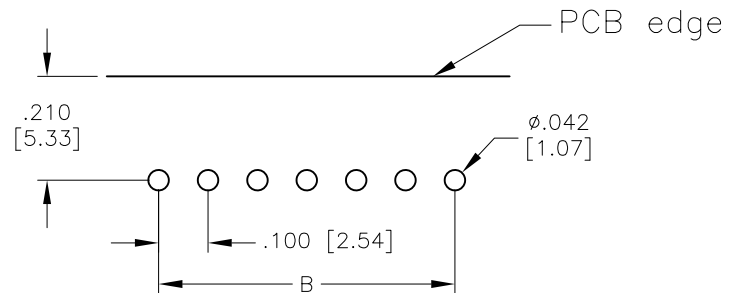
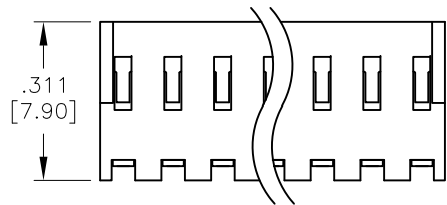
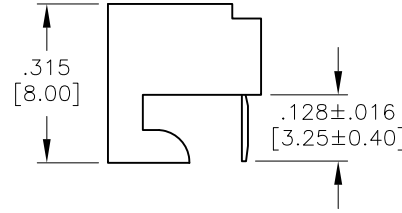
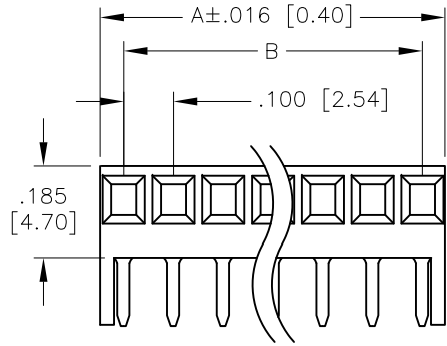


APPROVED: _____
 DATE: _____ TITLE: _____

Rev	AWO #	Description	Date	Appr
-		RELEASED	6/2/05	
A		REDRAWN	10/5/11	
B		UPDATE TOLERANCE	1/29/21	LH/YC



RECOMMENDED
PCB LAYOUT

SPECIFICATIONS:

Material:
 Insulator: Nylon, rated UL 94V-0
 Insulator color: White
 Contacts: Phosphor Bronze

Plating:
 Tin over Copper underplate overall

Electrical:
 Voltage rating: 250 V
 Current rating: 2.5 Amp max.
 Contact resistance: 20 mohms max. initial
 Insulation resistance: 5000 Mohms min.
 Dielectric withstanding voltage: 1,500 VAC for 1 minute

Mechanical:
 Recommended PCB thickness: 0.062" (1.57mm)
 Temperature Rating:
 0°C to +75°C

Environmental:
 Lead free, RoHS compliant



Positions: 02 thru 25

A = .100 [2.54] x No. of Spaces + .096 [2.44]

B = .100 [2.54] x No. of Spaces

UNLESS OTHERWISE SPECIFIED
 ALL DIMENSIONS ARE INCHES [MM]
 TOLERANCES: EXCEPT AS NOTED

INCHES		HOLES	
.X	± .10	∅X	± .10
.XX	± .020	∅XX	± .015
.XXX	± .015	∅XXX	± .010



909 Rahway Avenue,
 Union, NJ 07083
 Phone: 908-687-5000
 Fax: 908-687-5710

APPROVALS		DATE
DRAWN	SS	6/2/05
CHECKED		
APPROVED		

TITLE .100 [2.54] PCB CONNECTOR BOARD HOOKS, SIDE ENTRY		
SIZE X	PART NO. PCE-B-XX	REV. B
REF: S00123T	SCALE: NTS	SHEET 1 OF 1