

4421 and 4515



Specifications

Description: Single pole fuse blocks for $1\frac{3}{32}$ " X $1\frac{1}{2}$ " (10.3 X 38.1mm) fuses.

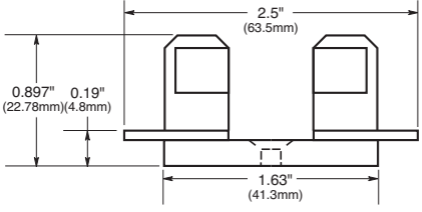
Dimensions: See Dimensions illustration.

Ratings:

Volts: — 250Vac/dc (or less)

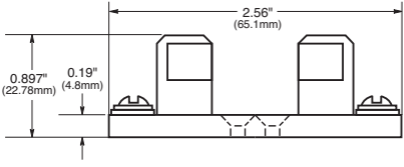
Amps: — 30A

Agency Information: CE



4421—Solder Terminals

Base width $\frac{5}{8}$ " (15.9mm)



4515—Screw Terminals

Base width $\frac{3}{4}$ " (19mm)

Note: Mounting screw hole diameter is 0.147" (3.7mm). Countersink, 0.312" (7.9mm). Max. mounting screw No. 6.