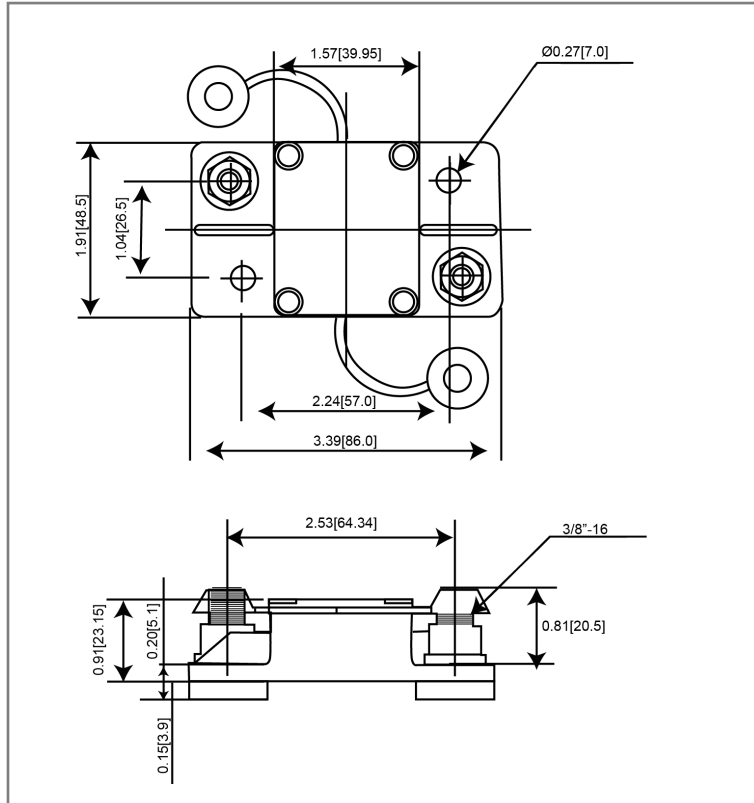


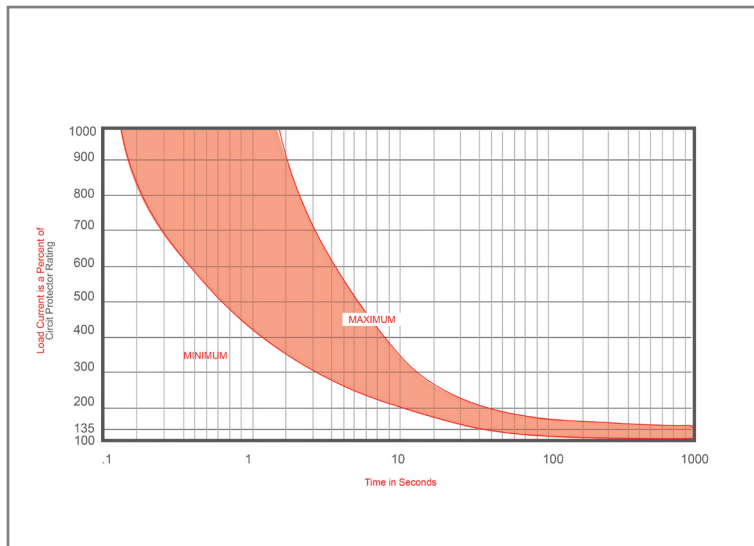
## Mechanical Dimensions: Inches [mm]



## Part Numbers Information

Optifuse P/N	Current
351025	25A
351030	30A
351040	40A
351050	50A
351060	60A
351070	70A
351080	80A
351090	90A
351100	100A
351120	120A
351135	135A
351140	140A
351150	150A
351175	175A
351200	200A
351250	250A
351300	300A

## Time vs. Percent of Rated Current



% of Rated Current	Min Hold Time	Max Hold Time
100%	No Trip ( ≥ 30 Minutes)	
135%	50s	30m
200%	12s	45s
300%	3.5s	15s

Trip time: Ambient temperature 25°C ± 3°C

## Electrical Specifications

<b>Voltage Rating</b>	48VDC (25A-200A), 14VDC (250A-300A)
<b>Reset Type</b>	Type I - Auto Reset
<b>Interrupting Rating</b>	3000A @ 30VDC (25A-150A), 1500A @ 30VDC (175A-300A)
<b>Operation Temperature</b>	-25° F ~ 180° F
<b>Compliances</b>	SAE J1625, SAE J1171, ABYC-E11, UL1077

## Material Specifications

Heavy Duty High Amp - Waterproof Circuit Breaker	
<b>Body Material</b>	Thermoset Plastic (UL94V-0)
<b>Terminals Configuration</b>	3/8"-16 Stud
<b>Mounting Type</b>	Surface Mount
<b>IP67</b>	

**Rev**    **Date of issue**    **Revision Notes**

**Designed**    **Approved**

A	01-10-2022	Initial Drawing	RC	OF
---	------------	-----------------	----	----