



P-DUKE POWER

RCD10W Series

DC-DC Converter
Up to 10 Watts

3
YEARS
WARRANTY

ROHS
COMPLIANT

REACH
COMPLIANT



Railway



Automation



Datacom



IPC



Industry



Measurement



Telecom



Automobile



Boat



Charger



Medical



PV



3000
VDC
Isolation
Voltage

4 : 1
Wide
Input
Range

6
sided
Shielding

Internal
EN55032
Class
Filter **A**

LOW
Standby
Power

NO
Min. Load
Required

REMOTE
ON
OFF

OCP

OVP

SCP

UVP

PART NUMBER STRUCTURE

RCD10	-	48	S	05	W	-	M3	A	H
Series Name		Input Voltage (VDC)	Output Quantity	Output Voltage (VDC)	Input Range		Operating Temp. Options	Remote ON/OFF & Trim Options	Isolation Options
		24: 9~36 48: 18~75 110: 36~160	S: Single D: Dual	3P3: 3.3 05: 5 12: 12 15: 15 24: 24 05: ±5 12: ±12 15: ±15 24: ±24	4:1		□: Standard -40°C~+105°C With derating M3: M3 Version -55°C~+105°C With derating	□: Negative logic A: Positive logic B: Without Ctrl pin C: Negative logic without Trim pin D: Without Ctrl & Trim pin E: Positive logic without Trim pin	□: Standard H: AC Isolation

TECHNICAL SPECIFICATION All specifications are typical at nominal input, full load and 25°C unless otherwise noted

Model Number	Input Range	Output Voltage	Output Current @ Full Load	Input Current @ No Load	Efficiency	Maximum Capacitor Load
	VDC	VDC	mA	mA	%	µF
RCD10-24S3P3W	9 ~ 36	3.3	3000	10	87	3500
RCD10-24S05W	9 ~ 36	5	2000	10	89	2500
RCD10-24S12W	9 ~ 36	12	830	10	89	430
RCD10-24S15W	9 ~ 36	15	670	10	90	350
RCD10-24S24W	9 ~ 36	24	420	10	90	125
RCD10-24D05W	9 ~ 36	±5	±1000	10	86	±1440
RCD10-24D12W	9 ~ 36	±12	±416	10	89	±250
RCD10-24D15W	9 ~ 36	±15	±333	10	89	±180
RCD10-24D24W	9 ~ 36	±24	±210	10	90	±56
RCD10-48S3P3W	18 ~ 75	3.3	3000	8	87	3500
RCD10-48S05W	18 ~ 75	5	2000	8	89	2500
RCD10-48S12W	18 ~ 75	12	830	8	89	430
RCD10-48S15W	18 ~ 75	15	670	8	90	350
RCD10-48S24W	18 ~ 75	24	420	8	90	125
RCD10-48D05W	18 ~ 75	±5	±1000	8	86	±1440
RCD10-48D12W	18 ~ 75	±12	±416	8	89	±250
RCD10-48D15W	18 ~ 75	±15	±333	8	89	±180
RCD10-48D24W	18 ~ 75	±24	±210	8	90	±56
RCD10-110S3P3W	36 ~ 160	3.3	3000	6	87	3500
RCD10-110S05W	36 ~ 160	5	2000	6	88	2500
RCD10-110S12W	36 ~ 160	12	830	6	89	430
RCD10-110S15W	36 ~ 160	15	670	6	89	350
RCD10-110S24W	36 ~ 160	24	420	6	89	125
RCD10-110D05W	36 ~ 160	±5	±1000	6	85	±1440
RCD10-110D12W	36 ~ 160	±12	±416	6	89	±250
RCD10-110D15W	36 ~ 160	±15	±333	6	89	±180
RCD10-110D24W	36 ~ 160	±24	±210	6	89	±56

INPUT SPECIFICATIONS						
Parameter	Conditions		Min.	Typ.	Max.	Unit
Operating input voltage range	24Vin(nom)		9	24	36	VDC
	48Vin(nom)		18	48	75	
	110Vin(nom)		36	110	160	
Start up voltage	24Vin(nom)				9	VDC
	48Vin(nom)				18	
	110Vin(nom)				36	
Shutdown voltage	24Vin(nom)		7.5	8	8.8	VDC
	48Vin(nom)		15.5	16	17.5	
	110Vin(nom)		32	34	35.5	
Start up time	Constant resistive load	Power up		30	50	ms
		Remote ON/OFF		30	50	
Input surge voltage	1 second, max.	24Vin(nom)			50	VDC
		48Vin(nom)			100	
		110Vin(nom)			200	
Input filter			Pi type			
Remote ON/OFF	Referred to -Vin pin	Positive logic (Option)	DC-DC ON	Open or 3 ~ 15VDC		mA
			DC-DC OFF	Short or 0 ~ 1.2VDC		
		Negative logic (Standard)	DC-DC ON	Short or 0 ~ 1.2VDC		
		DC-DC OFF		Open or 3 ~ 15VDC		
		Input current of Ctrl pin	-0.5		+1.0	
		Remote off input current		2.5		

OUTPUT SPECIFICATIONS							
Parameter	Conditions		Min.	Typ.	Max.	Unit	
Voltage accuracy			-1.0		+1.0	%	
Line regulation	Low Line to High Line at Full Load	Single	-0.2		+0.2	%	
		Dual	-0.5		+0.5		
Load regulation	No Load to Full Load	Single	-0.2		+0.2	%	
		Dual	-1.0		+1.0		
	10% Load to 90% Load	Single	-0.1		+0.1		
		Dual	-0.8		+0.8		
Cross regulation	Asymmetrical load 25%/100% FL	Dual	-5.0		+5.0	%	
Voltage adjustability	Single output	3.3Vout, 12Vout	-10		+10	%	
		Others	-10		+20		
Ripple and noise	Measured by 20MHz bandwidth						
	With a 10 μ F/25V X7R MLCC	Single				mVp-p	
		3.3Vout, 5Vout 12Vout, 15Vout	75 75				
	With a 2.2 μ F/50V X7R MLCC	Dual				mVp-p	
		5Vout 12Vout, 15Vout 24Vout	75 75 100				
Temperature coefficient			-0.02		+0.02	%/°C	
Transient response recovery time	25% load step change					250	μ s
Over voltage protection			3.3Vout	3.7	5.4	VDC	
			5Vout	6.3	7.4		
			12Vout	13.5	19.6		
			15Vout	18.3	22.0		
			24Vout	29.1	32.5		
Over load protection	% of Iout rated					170	%
Short circuit protection						Continuous, automatic recovery	

GENERAL SPECIFICATIONS							
Parameter	Conditions		Min.	Typ.	Max.	Unit	
Isolation voltage	1 minute	Input to Output	3000			VDC	
		Input (Output) to Case	2250				
	1 minute	AC Isolation	2000			VAC	
		Input (Output) to Case	1500				
Isolation resistance	500VDC					1	G Ω
Isolation capacitance						1500	pF
Switching frequency	24 VDC input, 48VDC input	3.3Vout, 5Vout	260	290	320	kHz	
		Others	325	360	395		
	110VDC input	All	220	245	270	kHz	
Safety approvals	IEC /EN/ UL62368-1					UL:E193009 CB:UL(Demko)	
Standard approvals	EN50155 EN45545-2						
Case material						copper	
Base material						FR4 PCB	
Potting material						Epoxy (UL94 V-0)	
Weight						16.5g (0.58oz)	
MTBF	MIL-HDBK-217F, Full load					2.334 x 10 ⁶ hrs	

ENVIRONMENTAL SPECIFICATIONS

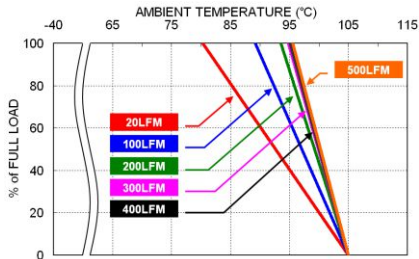
Parameter	Conditions	Min.	Typ.	Max.	Unit	
Operating ambient temperature	Standard type	-40		+105	°C	
	M3 version	-55		+105		
	All models meet the railway OT4 (70°C) temperature					
	RCD10-□□□S3P3W	Meet the railway OT6 (85°C) temperature requirement as power derating to 7W output power				
	RCD10-□□□S05W					
	RCD10-□□□D05W					
	The others	Meet the railway OT6 (85°C) temperature				
Maximum case temperature				105	°C	
Storage temperature range		-55		+125	°C	
Thermal impedance			16.8		°C/W	
Thermal shock					MIL-STD-810F	
Shock					EN61373, MIL-STD-810F	
Vibration					EN61373, MIL-STD-810F	
Relative humidity					5% to 95% RH	

EMC SPECIFICATIONS

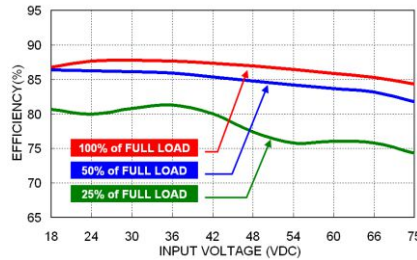
Parameter	Conditions	Level
EMI	EN55032, EN50121-3-2	Without external components
		With external components.
EMS	EN55035, EN50121-3-2	Class A Class B
ESD	EN61000-4-2	Air ± 8kV and Contact ± 6kV
Radiated immunity	EN61000-4-3	20 V/m
Fast transient	EN61000-4-4	±2kV
	RCD10-24□□□W	With an aluminum electrolytic capacitor (Nippon chemi-con KY series, 470µF/50V) and a TVS (SMDJ58A, 58V, 3000Watt peak pulse power) in parallel.
	RCD10-48□□□W	With an aluminum electrolytic capacitor (Nippon chemi-con KY series, 330µF/100V) and a TVS (SMBJ120A, 120V, 600Watt peak pulse power) in parallel.
	RCD10-110□□□W	With an aluminum electrolytic capacitor (Nippon chemi-con KXJ series, 330µF/200V) and a TVS (SMBJ300A, 300V, 600Watt peak pulse power) in parallel.
Surge	EN61000-4-5	±2kV
	RCD10-24□□□W	With an aluminum electrolytic capacitor (Nippon chemi-con KY series, 470µF/50V) and a TVS (SMDJ58A, 58V, 3000Watt peak pulse power) in parallel.
	RCD10-48□□□W	With an aluminum electrolytic capacitor (Nippon chemi-con KY series, 330µF/100V) and a TVS (SMBJ120A, 120V, 600Watt peak pulse power) in parallel.
	RCD10-110□□□W	With an aluminum electrolytic capacitor (Nippon chemi-con KXJ series, 330µF/200V) and a TVS (SMBJ300A, 300V, 600Watt peak pulse power) in parallel.
Conducted immunity	EN61000-4-6	10 Vr.m.s
Power frequency magnetic field	EN61000-4-8	100A/m continuous; 1000A/m 1 second

CAUTION: This power module is not internally fused. An input line fuse must always be used.

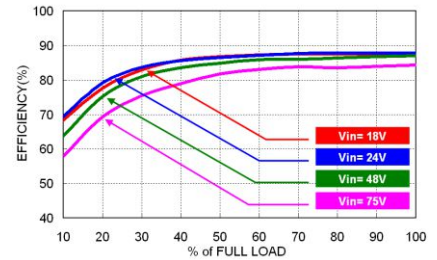
CHARACTERISTIC CURVE



RCD10-48S3P3W Derating Curve



RCD10-48S3P3W Efficiency vs. Input Voltage



RCD10-48S3P3W Efficiency vs. Output Load

FUSE CONSIDERATION

This power module is not internally fused. An input line fuse must always be used.

This encapsulated power module can be used in a wide variety of applications, ranging from simple stand-alone operation to an integrated part of sophisticated power architecture.

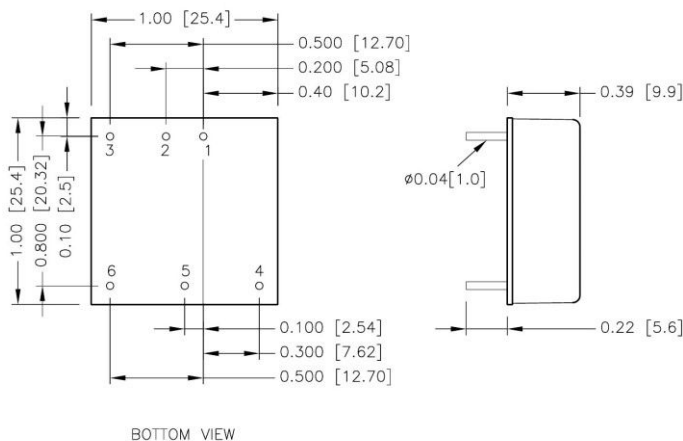
To maximum flexibility, internal fusing is not included; however, to achieve maximum safety and system protection, always use an input line fuse.

The input line fuse suggest as below :

Modules	Fuse Rating (A)	Fuse Type
RCD10-24S□□W、RCD10-24D□□W	2	Slow-Blow
RCD10-48S□□W、RCD10-48D□□W	1.25	Slow-Blow
RCD10-110S□□W、RCD10-110D□□W	0.63	Slow-Blow

The table based on the information provided in this data sheet on inrush energy and maximum DC input current at low Vin..

MECHANICAL DRAWING

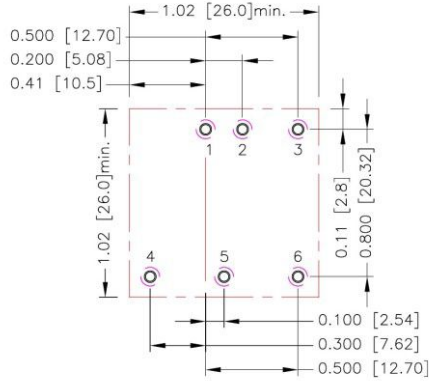


PIN CONNECTION

PIN	SINGLE	DUAL
1	+Vin	+Vin
2	-Vin	-Vin
3	Ctrl	Ctrl
4	+Vout	+Vout
5	Trim	Common
6	-Vout	-Vout

- All dimensions in inch [mm]
- Tolerance :x.xx±0.02 [x.xx±0.5]
x.xxx±0.01 [x.xx±0.25]
- Pin dimension tolerance ±0.004[0.10]

RECOMMENDED PAD LAYOUT



All dimensions in inch[mm]
 Pad size(lead free recommended)
 Through hole 1.2.3.4.5.6: $\Phi 0.051$ [1.30]
 Top view pad 1.2.3.4.5.6: $\Phi 0.064$ [1.63]
 Bottom view pad 1.2.3.4.5.6: $\Phi 0.102$ [2.60]

THERMAL CONSIDERATIONS

The power module operates in a variety of thermal environments.

However, sufficient cooling should be provided to help ensure reliable operation of the unit.

Heat is removed by conduction, convection, and radiation to the surrounding environment.

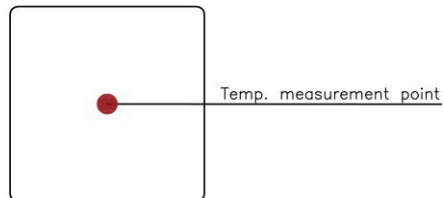
Proper cooling can be verified by measuring the point as the figure below.

The temperature at this location should not exceed "Maximum case temperature".

When operating, adequate cooling must be provided to maintain the test point temperature at or below "Maximum case temperature".

You can limit this temperature to a lower value for extremely high reliability.

- Thermal test condition with vertical direction by natural convection (20LFM).



TOP VIEW

OUTPUT VOLTAGE ADJUSTMENT

Output voltage set point adjustment allows the user to increase or decrease the output voltage set point of the module. This is accomplished by connecting an external resistor between the Trim pin and either the +Output or -Output pins. With an external resistor between the Trim and -Output pin, the output voltage set point increases. With an external resistor between the Trim and +Output pin, the output voltage set point decreases. The external Trim resistor needs to be at least 1/16W of rated power.

Trim Up Equation

$$R_U = \left[\frac{G \times L}{(V_{o,up} - L - K)} - H \right] \Omega$$

Trim Down Equation

$$R_D = \left[\frac{(V_o - V_{o,down}) \times G}{(V_o - V_{o,down})} - H \right] \Omega$$

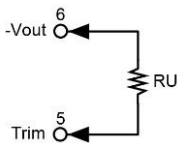
Trim Constants

Module	G	H	K	L
RCD10-□□S3P3W	5110	2050	0.8	2.5
RCD10-□□S05W	5110	2050	2.5	2.5
RCD10-□□S12W	10000	5110	9.5	2.5
RCD10-□□S15W	10000	5110	12.5	2.5
RCD10-□□S24W	56000	13000	21.5	2.5

EXTERNAL OUTPUT TRIMMING

Output can be externally trimmed by using the method shown below.

Trim-up



□□S3P3W

ΔV (%)	1	2	3	4	5	6	7	8	9	10
Vout (V)	3.333	3.366	3.399	3.432	3.465	3.498	3.531	3.564	3.597	3.630
RU (kΩ)	385.071	191.511	126.990	94.730	75.374	62.470	53.253	46.340	40.963	36.662

□□S05W

ΔV (%)	1	2	3	4	5	6	7	8	9	10
Vout (V)	5.050	5.100	5.150	5.200	5.250	5.300	5.350	5.400	5.450	5.500
RU (kΩ)	253.450	125.700	83.117	61.825	49.050	40.533	34.450	29.888	26.339	23.500

ΔV (%)	11	12	13	14	15	16	17	18	19	20
Vout (V)	5.550	5.600	5.650	5.700	5.750	5.800	5.850	5.900	5.950	6.000
RU (kΩ)	21.177	19.242	17.604	16.200	14.983	13.919	12.979	12.144	11.397	10.725

□□S12W

ΔV (%)	1	2	3	4	5	6	7	8	9	10
Vout (V)	12.120	12.240	12.360	12.480	12.600	12.720	12.840	12.960	13.080	13.200
RU (kΩ)	203.223	99.057	64.334	46.973	36.557	29.612	24.652	20.932	18.038	15.723

□□S15W

ΔV (%)	1	2	3	4	5	6	7	8	9	10
Vout (V)	15.150	15.300	15.450	15.600	15.750	15.900	16.050	16.200	16.350	16.500
RU (kΩ)	161.557	78.223	50.446	36.557	28.223	22.668	18.700	15.723	13.409	11.557

ΔV (%)	11	12	13	14	15	16	17	18	19	20
Vout (V)	16.650	16.800	16.950	17.100	17.250	17.400	17.550	17.700	17.850	18.000
RU (kΩ)	10.042	8.779	7.711	6.795	6.001	5.307	4.694	4.149	3.662	3.223

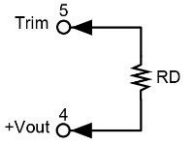
□□S24W

ΔV (%)	1	2	3	4	5	6	7	8	9	10
Vout (V)	24.240	24.480	24.720	24.960	25.200	25.440	25.680	25.920	26.160	26.400
RU (kΩ)	570.333	278.667	181.444	132.833	103.667	84.222	70.333	59.917	51.815	45.333

ΔV (%)	11	12	13	14	15	16	17	18	19	20
Vout (V)	26.640	26.880	27.120	27.360	27.600	27.840	28.080	28.320	28.560	28.800
RU (kΩ)	40.030	35.611	31.872	28.667	25.889	23.458	21.314	19.407	17.702	16.167

OUTPUT VOLTAGE ADJUSTMENT(CONTINUED)

Trim-down



□□S3P3W

ΔV (%)	1	2	3	4	5	6	7	8	9	10
Vout (V)	3.267	3.234	3.201	3.168	3.135	3.102	3.069	3.036	3.003	2.970
RD (k Ω)	116.719	54.779	34.133	23.810	17.616	13.486	10.537	8.325	6.604	5.228

□□S05W

ΔV (%)	1	2	3	4	5	6	7	8	9	10
Vout (V)	4.950	4.900	4.850	4.800	4.750	4.700	4.650	4.600	4.550	4.500
RD (k Ω)	248.340	120.590	78.007	56.715	43.940	35.423	29.340	24.778	21.229	18.390

□□S12W

ΔV (%)	1	2	3	4	5	6	7	8	9	10
Vout (V)	11.880	11.760	11.640	11.520	11.400	11.280	11.160	11.040	10.920	10.800
RD (k Ω)	776.557	380.723	248.779	182.807	143.223	116.834	97.985	83.848	72.853	64.057

□□S15W

ΔV (%)	1	2	3	4	5	6	7	8	9	10
Vout (V)	14.850	14.700	14.550	14.400	14.250	14.100	13.950	13.800	13.650	13.500
RD (k Ω)	818.223	401.557	262.668	193.223	151.557	123.779	103.938	89.057	77.483	68.223

□□S24W

ΔV (%)	1	2	3	4	5	6	7	8	9	10
Vout (V)	23.760	23.520	23.280	23.040	22.800	22.560	22.320	22.080	21.840	21.600
RD (k Ω)	4947.667	2439.333	1603.222	1185.167	934.333	767.111	647.667	558.083	488.407	432.667