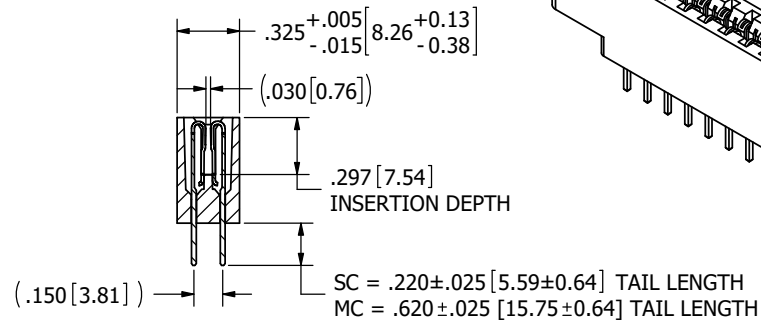
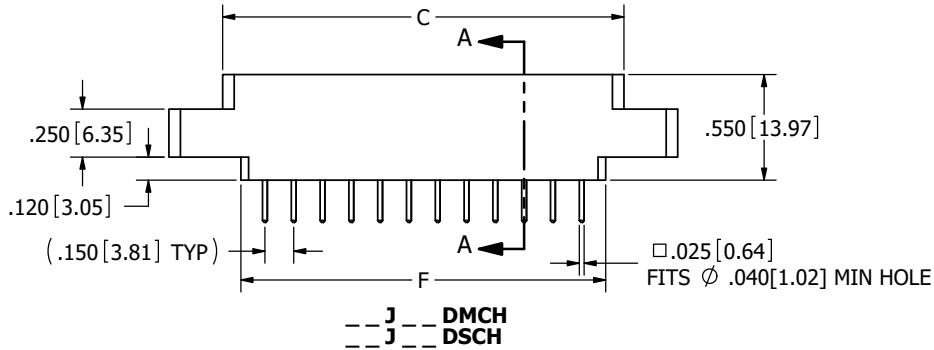
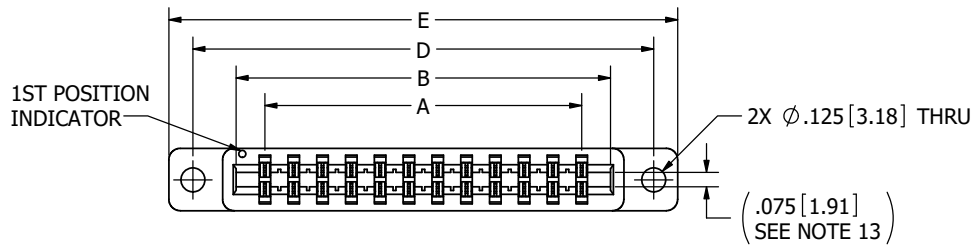
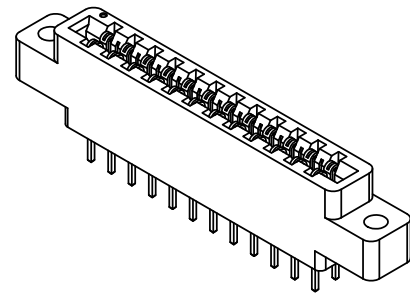


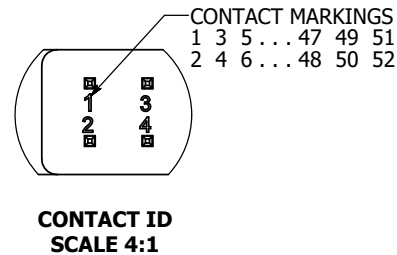
REVISIONS				
REV.	ECO. NO	DESCRIPTION	DATE	BY
A	2351	INITIAL RELEASE	06/01/2011	SE
B	2612	ADD 25 POSITION & 'B' MOUNTING OPTION, UPDATE INSULATOR WIDTH TOLERANCE & DWG FORMAT	6/11/2012	JH
C	4576	UPDATE NOTE 8 (REMOVE 'PER CONTACT'), ADD MATERIAL COLOR TO P/N CODING	12/15/2022	MM



SECTION A-A



RECOMMENDED PCB LAYOUT



- NOTES:
1. INSULATOR MATERIAL: SEE PART NUMBER CODING
 2. CONTACT MATERIAL: SEE PART NUMBER CODING
 3. PLATING: SEE PART NUMBER CODING
 4. OPERATING TEMPERATURE: SEE PART NUMBER CODING
 5. PROCESSING TEMP: SEE PART NUMBER CODING
 6. UL FLAMMABILITY RATING: 94V-0
 7. OPERATING VOLTAGE: 850 VAC
 8. CURRENT RATING: 3 AMP
 9. CONTACT RESISTANCE: 30 MILLI OHMS MAX
 10. INSULATION RESISTANCE: 5000 MEGA OHMS
 11. DURABILITY: 500 CYCLES MINIMUM
 12. CONNECTOR IDENTIFICATION: THE PART SHALL BE MARKED WITH A PART NUMBER AND LOT CODE
 13. BOARD THICKNESS ACCOMMODATED: $.062 \pm .008 [1.57 \pm 0.20]$
 14. INSERTION FORCE: 16 OZ MAX PER CONTACT PAIR WHEN USING A $.062 [1.57]$ TEST BLADE
INTERNAL INSPECTION TO BE PER SULLIN'S WORK INSTRUCTION WI-8.6-03
 15. WITHDRAWAL FORCE: 1 OZ MIN PER CONTACT PAIR USING $.062 [1.57]$ TEST BLADE



UNLESS OTHERWISE SPECIFIED: DIMENSIONS ARE IN INCHES (MM)	DRAWN	DATE	NAME	
		5/31/2011	SE	
TOLERANCES:	<small>THE INFORMATION HEREIN CONTAINS PROPRIETARY INFORMATION OF SULLINS ELECTRONICS AND IS NOT TO BE REPRODUCED, USED OR DISCLOSED TO OTHERS FOR ANY PURPOSE EXCEPT AS SPECIFICALLY AUTHORIZED IN WRITING BY AN OFFICER OF SULLINS ELECTRONICS.</small>			
ANGULAR: $\pm 1^\circ$	TITLE EDGE CARD, .150" PITCH, HP			
DECIMALS XX = $\pm .02 [5]$ XXX = $\pm .005 [13]$ XXXX = $\pm .0005 [13]$	PART NUMBER _ _ J _ _ DSC (DMC) _			
	SIZE	CAGE CODE	DWG. NO.	REV
	C	54453	C11696	C
	SCALE: 2:1	SHEET 1 OF 2		

CUSTOMER COPY

PART NUMBER	NO. OF POS.	A±.008[0.20]		B±.008[0.20]		C±.015[0.38]		D±.010[0.25]		E±.020[0.51]		F±.015[0.38]	
		INCH	MM	INCH	MM	INCH	MM	INCH	MM	INCH	MM	INCH	MM
J12DSC(DMC)	12	1.650	41.91	1.950	49.53	2.090	53.09	2.400	60.96	2.650	67.31	1.900	48.26
J18DSC(DMC)	18	2.550	64.77	2.850	72.39	2.990	75.95	3.300	83.82	3.550	90.17	2.800	71.12
J22DSC(DMC)	22	3.150	80.01	3.450	87.63	3.590	91.19	3.900	99.06	4.150	105.41	3.400	86.36
J25DSC(DMC)B	25	3.600	91.44	"B" MOUNTING ONLY									
J26DSC(DMC)	26	3.750	95.25	4.050	102.87	4.190	106.43	4.500	114.30	4.750	120.65	4.000	101.60
J28DSC(DMC)	28	4.050	102.87	4.350	110.49	4.490	114.05	4.800	121.92	5.050	128.27	4.300	109.22

PART NUMBER CODING

MATERIAL (INSULATOR/CONTACT)

- E = BLUE PBT/PHOSPHOR BRONZE**
OPERATING TEMP: -65°C TO +125°C
PROCESSING TEMP: WAVE SOLDERING ONLY
- R = GREEN PPS/PHOSPHOR BRONZE**
OPERATING TEMP: -65°C TO +125°C
PROCESSING TEMP: 260°C MAX FOR 20 SECONDS
- G = BLACK PA9T/PHOSPHOR BRONZE**
OPERATING TEMP: -65°C TO +125°C
PROCESSING TEMP: 260°C MAX FOR 20 SECONDS

MOUNTING STYLE

- H = .125" DIA. CLEARANCE HOLES (PAGE 1)
- N = NO MOUNTING EARS (PAGE 2)
- I = #4-40 THREADED INSERT (PAGE 2)
- B = OPEN CARD SLOT (PAGE 2)

TERMINATION

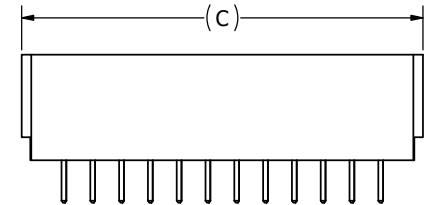
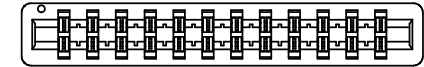
- MC = .620" [15.75] TAIL LENGTH
- SC = .220" [5.59] TAIL LENGTH

NUMBER OF POSITIONS (CONTACTS PER ROW)

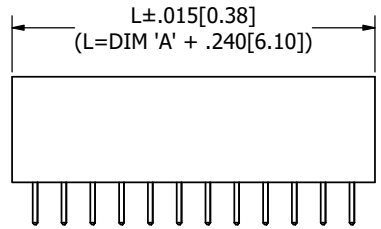
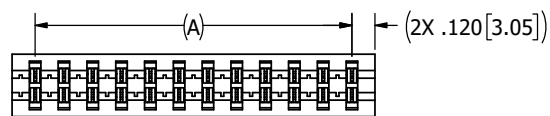
PLATING

ALL PLATINGS HAVE .000050" NICKEL UNDERPLATE

- B = .000010" GOLD .000100" PURE TIN, MATTE
- C = .000030" GOLD .000100" PURE TIN, MATTE

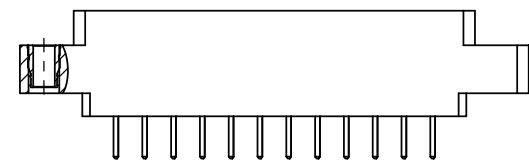
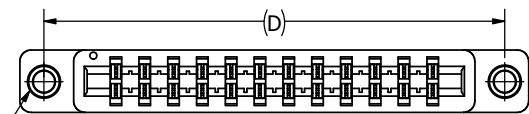


J DSCN
J DMCN



J DSCB
J DMCB

2X #4-40
THREADED INSERT



J DSCI
J DMCI

CUSTOMER COPY



UNLESS OTHERWISE SPECIFIED:
DIMENSIONS ARE IN INCHES (MM)

TOLERANCES:
ANGULAR: ± 1°

DECIMALS
.XX = ± .02 [5]
.XXX = ± .005 [13]
.XXXX = ± .0005 [13]

DRAWN	DATE	NAME
	5/31/2011	SE
<small>THE INFORMATION HEREIN CONTAINS PROPRIETARY INFORMATION OF SULLINS ELECTRONICS AND IS NOT TO BE REPRODUCED, USED OR DISCLOSED TO OTHERS FOR ANY PURPOSE EXCEPT AS SPECIFICALLY AUTHORIZED IN WRITING BY AN OFFICER OF SULLINS ELECTRONICS.</small>		

SULLINS CONNECTOR SOLUTIONS			
TITLE EDGE CARD, .150" PITCH, HP			
PART NUMBER J DSC (DMC)			
SIZE C	CAGE CODE 54453	DWG. NO. C11696	REV C
SCALE: 2:1		SHEET 2 OF 2	