

6

5

4

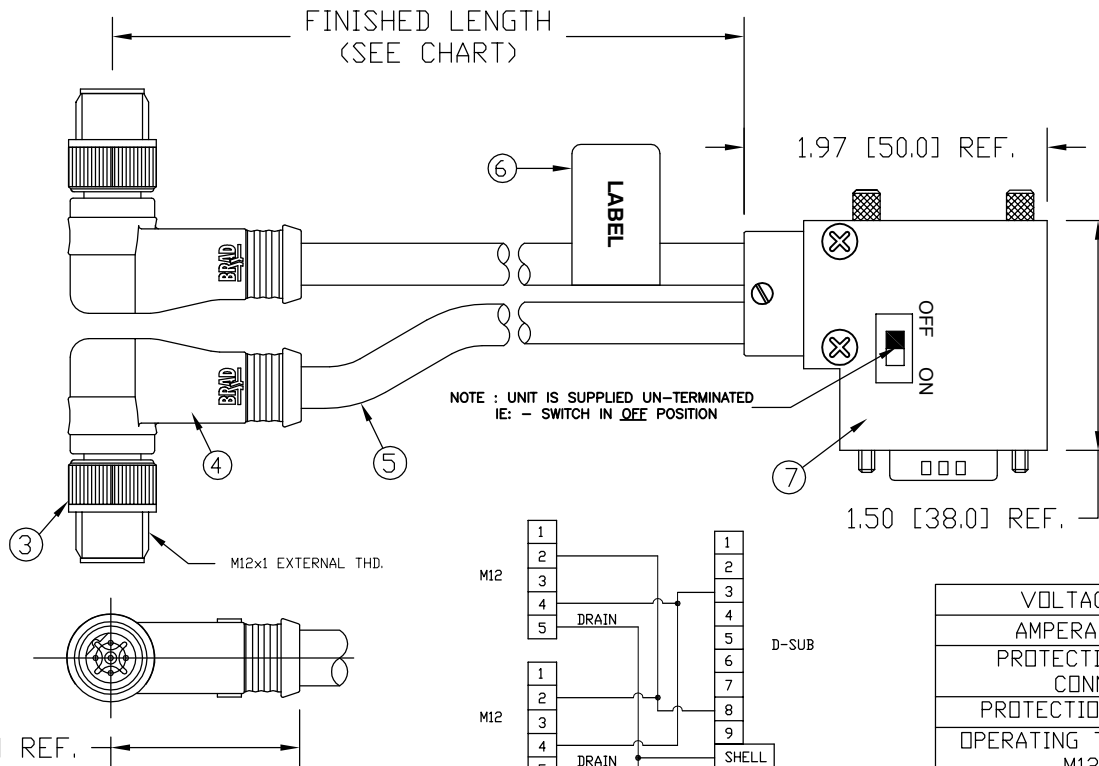
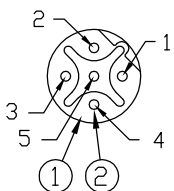
3

2

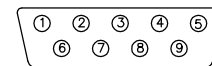
1

MATERIAL NUMBER	ENGINEERING NUMBER	FINISHED LENGTH
1200980188	BM5G63PP4M010	1.0M +55.6mm -0 [3.28' +2.19" -0]
1200980189	BM5G63PP4M050	5.0M +165.1mm -0 [16.40' +6.50" -0]

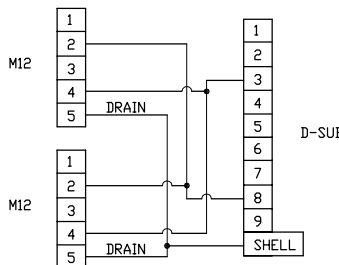
MICRO-CHANGE MALE FACE VIEW



9 WAY D-SUB MALE FACE VIEW



PINS 1, 2, 4, 5, 7, & 9 ARE NOT CONNECTED ON D-SUB



VOLTAGE RATING	250 VAC/VDC
AMPERAGE RATING	4 AMPS
PROTECTION FOR M12 CONNECTOR	IP67
PROTECTION FOR D-SUB	IP40
OPERATING TEMPERATURE - M12 HEAD	-20°C TO 80°C
OPERATING TEMPERATURE - D-SUB	0°C TO 60°C

ITEM	COMPONENT	MATERIAL	FINISH
1	M12 INSERT	NYLON	BLACK
2	CONTACT PIN	COPPER ALLOY	GOLD OVER NICKEL
3	COUPLING NUT	BRASS	NICKEL PLATED
4	OVERMOLD	PUR	YELLOW
5	CABLE- 22 AWG, COPPER STRANDING TWISTED PAIR, SHIELD WITH BRAID	PUR	PURPLE
6	LABEL	MLYAR	BLACK/YELLOW
7	D-SUB	ABS	BLACK

RELEASED DRAWING  
 EC NO: MELU2010-0081  
 DRWN: LHARTMAN 8/26/09  
 CHKD: BWOODMAN 09/08/27  
 APPR: JFMURPHY 2009/08/28

QUALITY SYMBOLS  
 ▽=0  
 ▽/C=0

	GENERAL TOLERANCES (UNLESS SPECIFIED)	
	mm	INCH
4 PLACES	±---	±---
3 PLACES	±---	±---
2 PLACES	±---	±.01
1 PLACE	±0.3	±---
ANGULAR ±---°		
DRAFT WHERE APPLICABLE MUST REMAIN WITHIN DIMENSIONS		

DIMENSION STYLE	
IN/MM	SCALE
DRAWN BY	DATE
LHARTMAN	2009/08/26
CHECKED BY	DATE
BWOODMAN	2009/08/27
APPROVED BY	DATE
JFMURPHY	2009/08/27
MATERIAL NO.	DOCUMENT NO.
SEE TABLE	SD-120098-012
SIZE A	THIS DRAWING CONTAINS INFORMATION THAT IS PROPRIETARY TO MOLEX INCORPORATED AND SHOULD NOT BE USED WITHOUT WRITTEN PERMISSION

SCALE	DESIGN UNITS	THIRD ANGLE PROJECTION
NTS	INCH	
TITLE		
MICRO-CHANGE PROFIBUS 5P MA 90 REV KEY - D-SUB #22/2 SHLD PURPLE PUR		
MOLEX INCORPORATED		
DOCUMENT NO.		SHEET NO.
SD-120098-012		1 OF 1

6

5

4

3

2

1