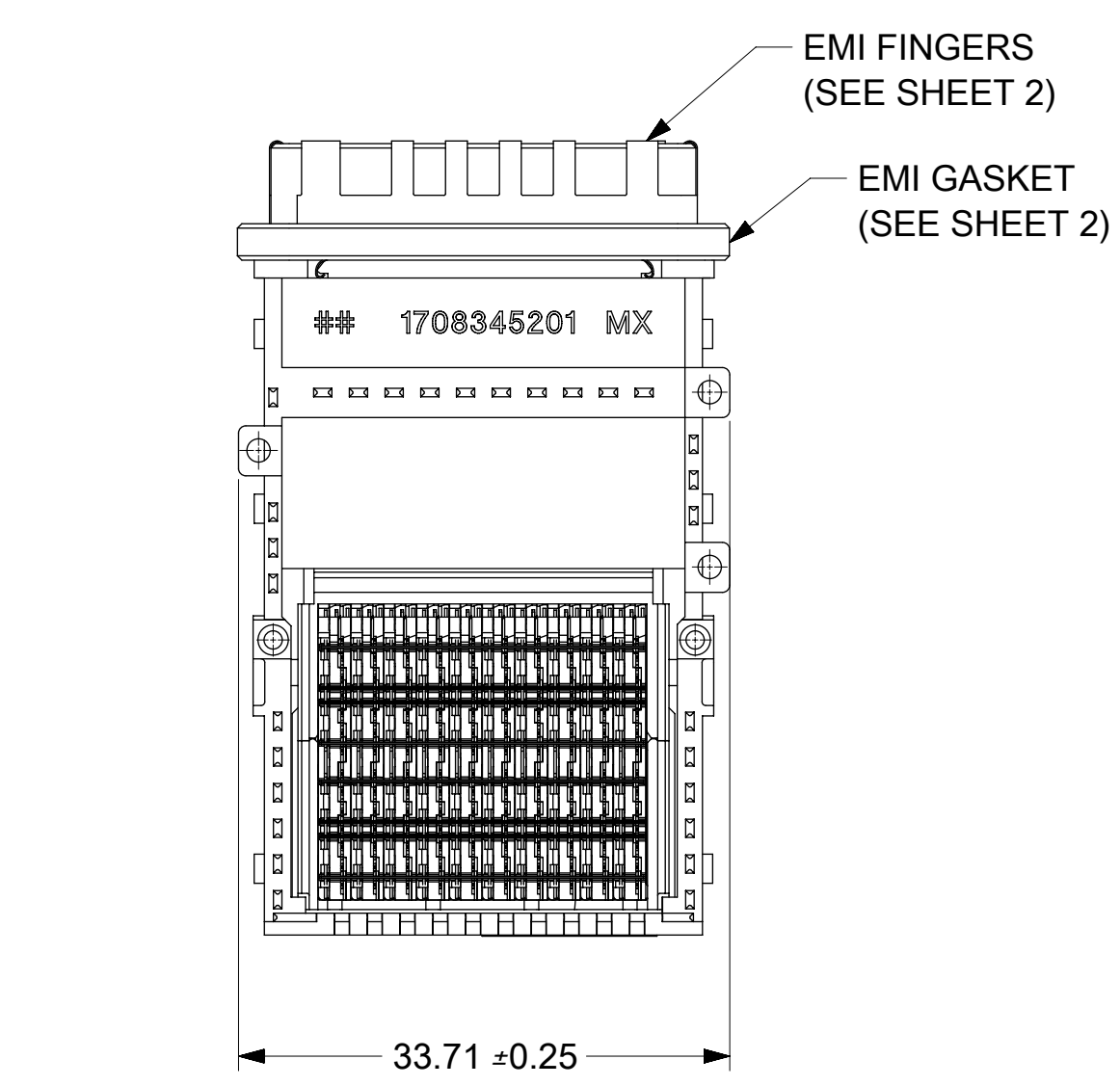
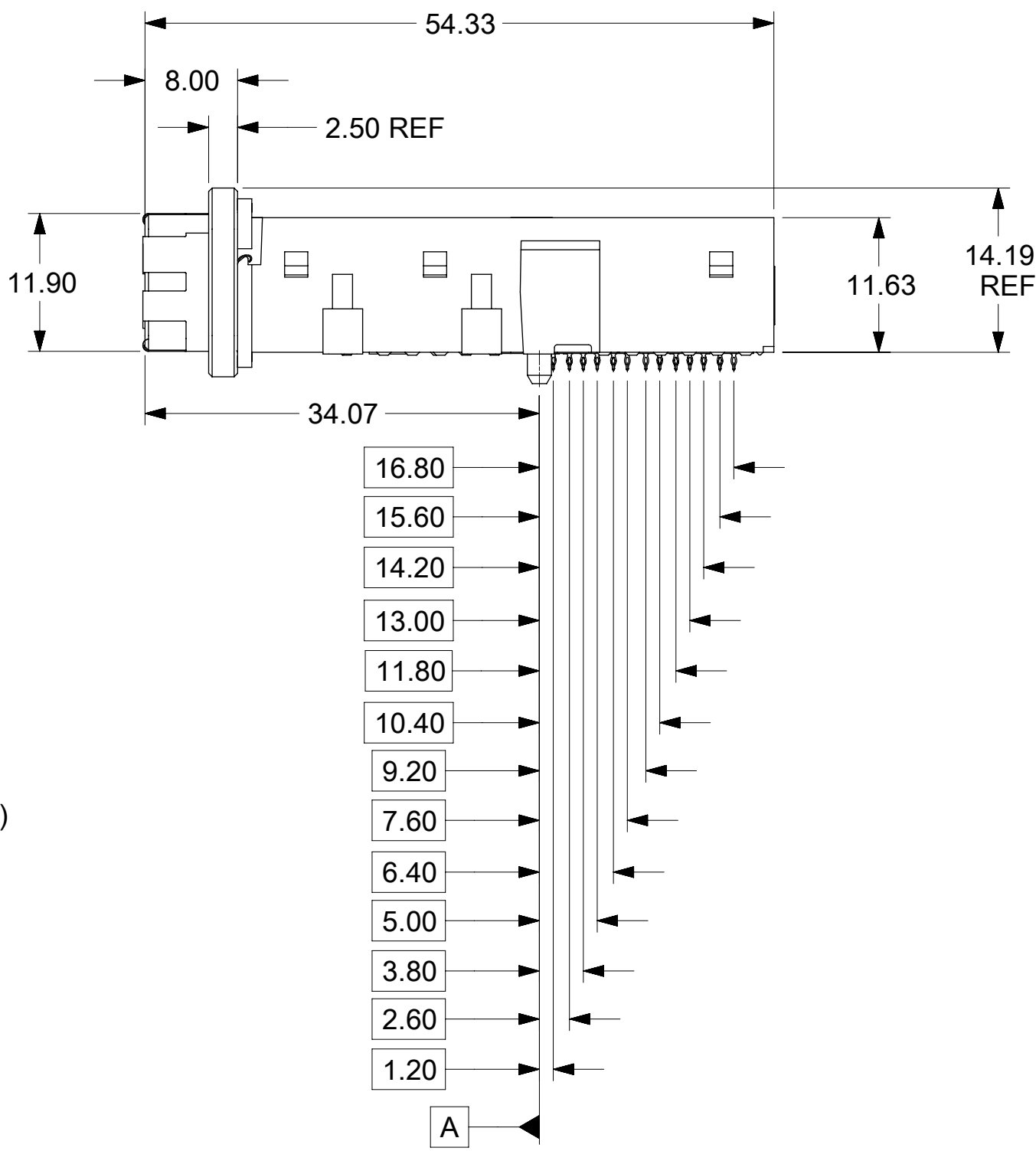
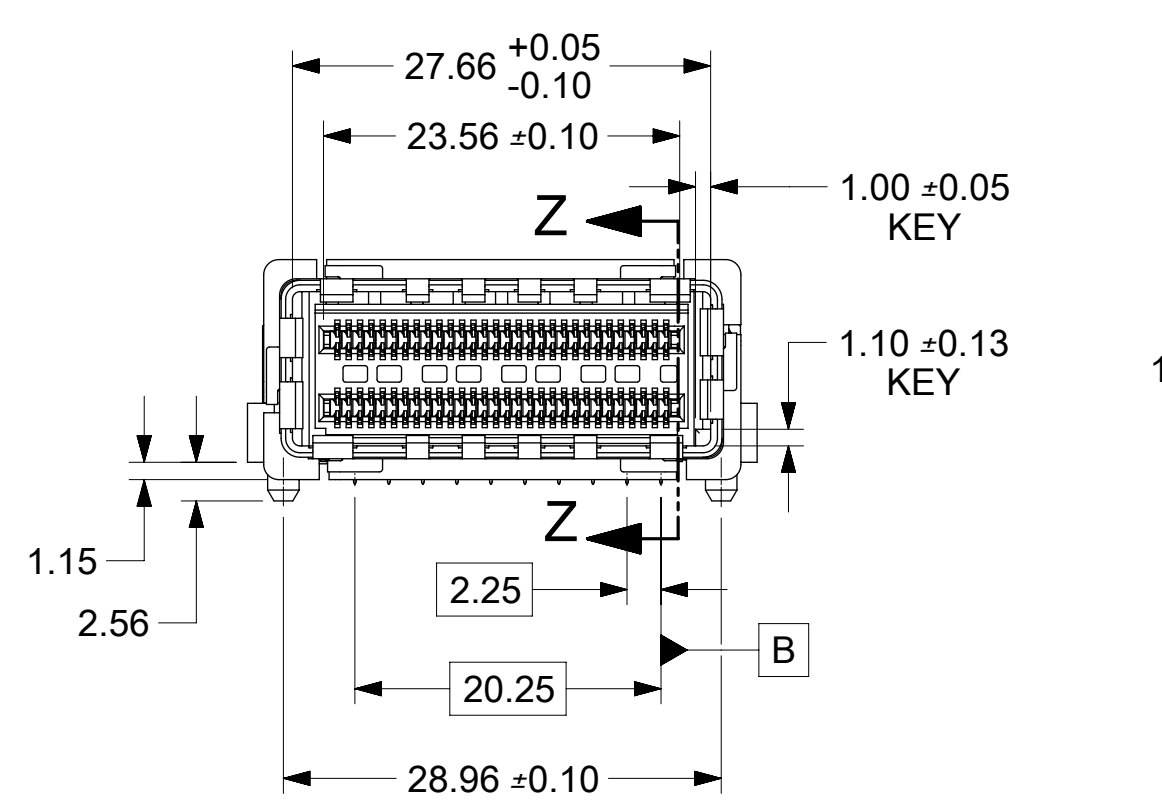
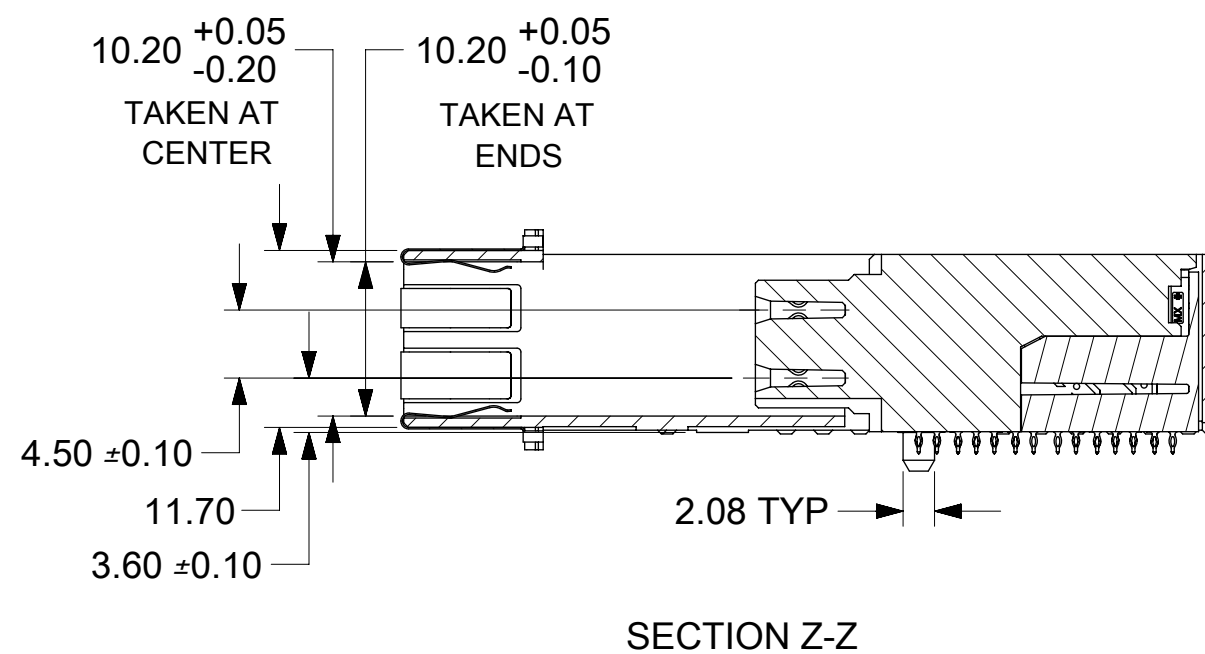
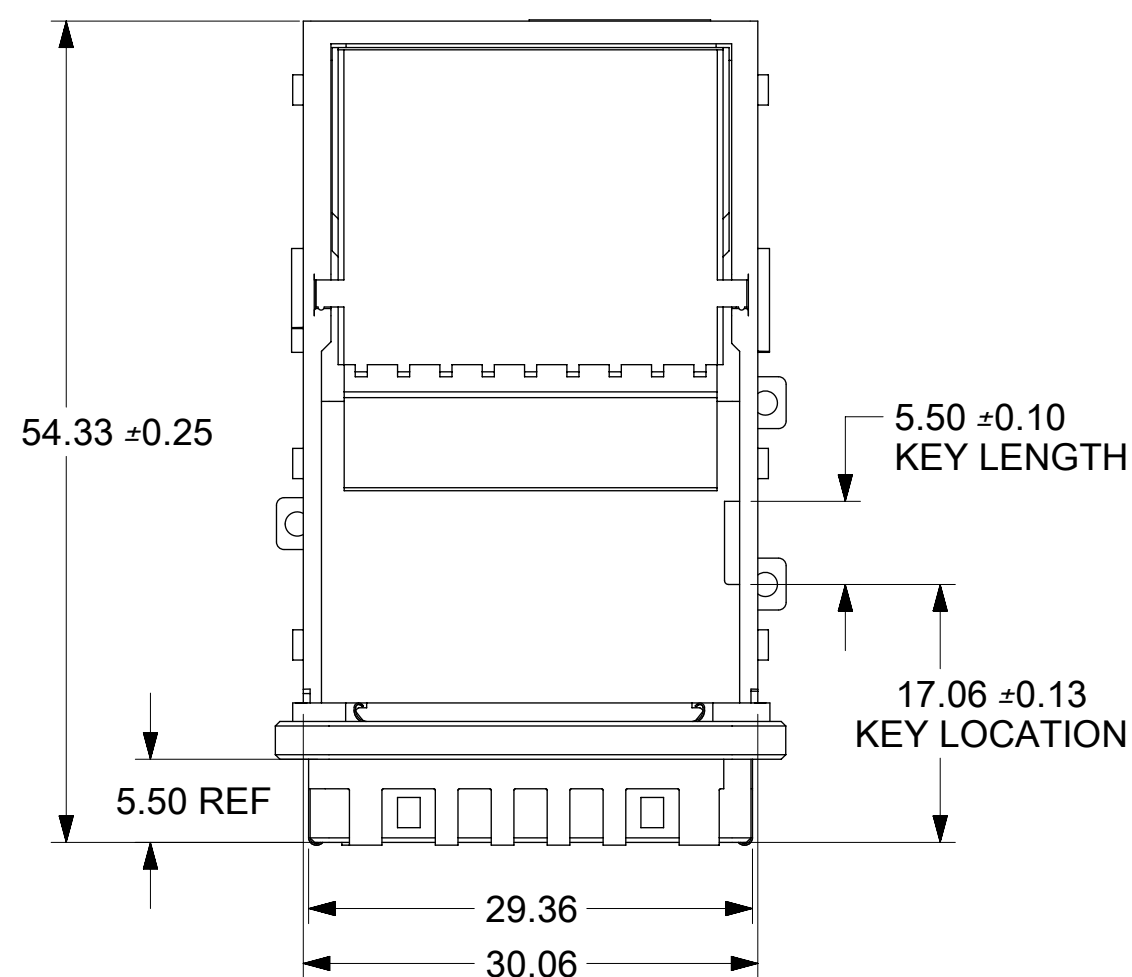


MATERIAL NUMBER
173359001 SHOWN



- NOTES:
- MATERIALS:
 WAFER HOUSING:
 HIGH TEMPERATURE THERMOPLASTIC
 GLASS-FILLED, UL 94V-0;
 DIE CAST HOUSING: NICKEL PLATED DIE CAST ALLOY;
 COVER: STAINLESS STEEL ALLOY;
 EMI GASKET: CONDUCTIVE POLYMER;
 EMI FINGERS: NICKEL PLATED COPPER ALLOY;
 - FINISHES:
 PLATING:
 CONTACT AREA:
 0.76µm MIN GOLD OVER 2.54µm MIN NICKEL;
 COMPLIANT TAIL AREA:
 0.76-3.00µm TIN OVER 1.27µm MIN NICKEL;
 - PRODUCT SPECIFICATION: PS-173359-0001;
 - PACKAGING SPECIFICATION: PK-170834-0001;
 - MATES WITH: MOLEX CABLE SERIES 200433;
 - MOUNTING HARDWARE REQUIRED:
 M2x0.4 CAP SCREWS (3);
 LENGTH: PCB THICKNESS + 3.0 MIN (6.0 MM MAX);
 - APPLICATION SPECIFICATION: AS-173359-0002;
 - ROUTING GUIDELINE: AS-173359-0001.

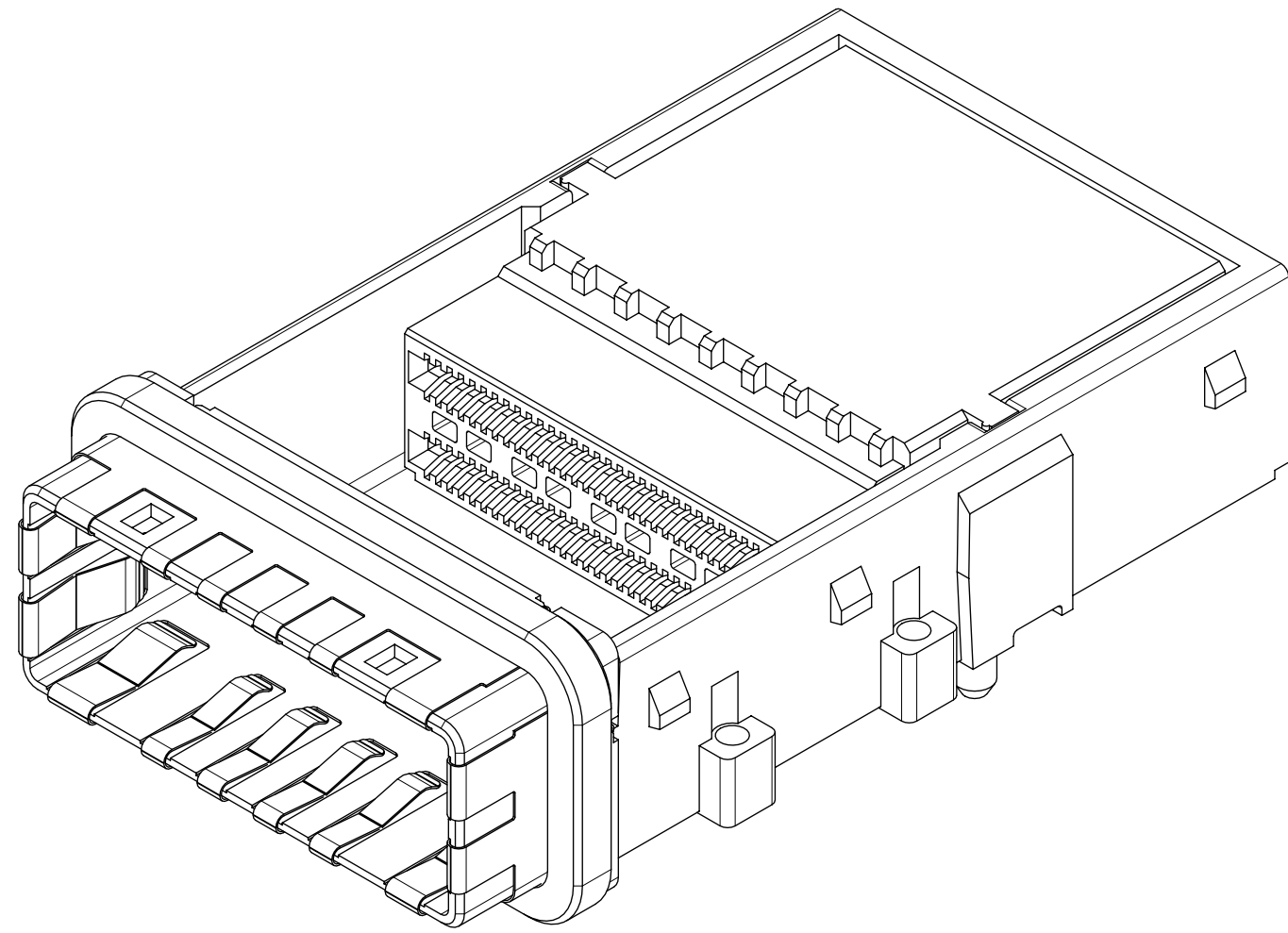
THIS DRAWING CONTAINS INFORMATION THAT IS PROPRIETARY TO MOLEX ELECTRONIC TECHNOLOGIES, LLC AND SHOULD NOT BE USED WITHOUT WRITTEN PERMISSION									
SYMBOLS		DIMENSION UNITS		SCALE		CURRENT REV DESC:			
▽ = 0		mm				EC NO: 647299			
▽ = 0		GENERAL TOLERANCES (UNLESS SPECIFIED)				DRWN: TTAO03 2020/09/02			
▽ = 0		ANGULAR TOL ± 0.5°				CHK'D: WZHAO21 2020/10/28			
▽ = 0		4 PLACES ±				APPR: WZHAO21 2020/10/28			
▽ = 0		3 PLACES ±				INITIAL REVISION:			
▽ = 0		2 PLACES ± 0.25				DRWN: MHANUMAPPARE 2016/11/29			
▽ = 0		1 PLACE ±				APPR: SMILLER 2017/02/14			
▽ = 0		0 PLACES ±				DRAFT WHERE APPLICABLE MUST REMAIN WITHIN DIMENSIONS			
▽ = 0		THIRD ANGLE PROJECTION		DRAWING		SERIES		MATERIAL NUMBER	
▽ = 0		C-SIZE		173359		SEE TABLE		CUSTOMER	
▽ = 0		GENERAL MARKET		1 OF 5		SHEET NUMBER		1	

molex

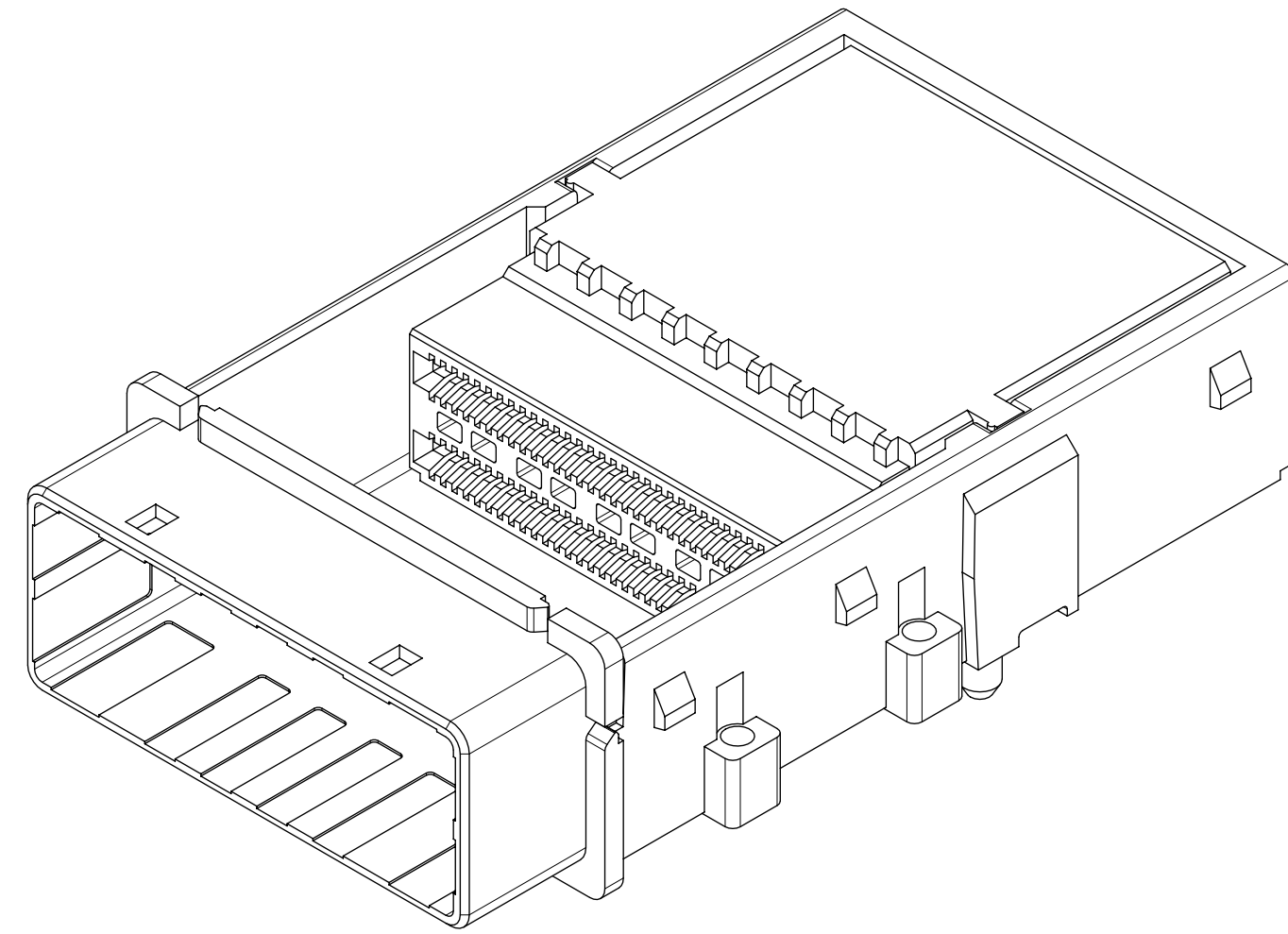
ZCD 90 OHM 16X
STYLE 1 ASSEMBLY

PRODUCT CUSTOMER DRAWING

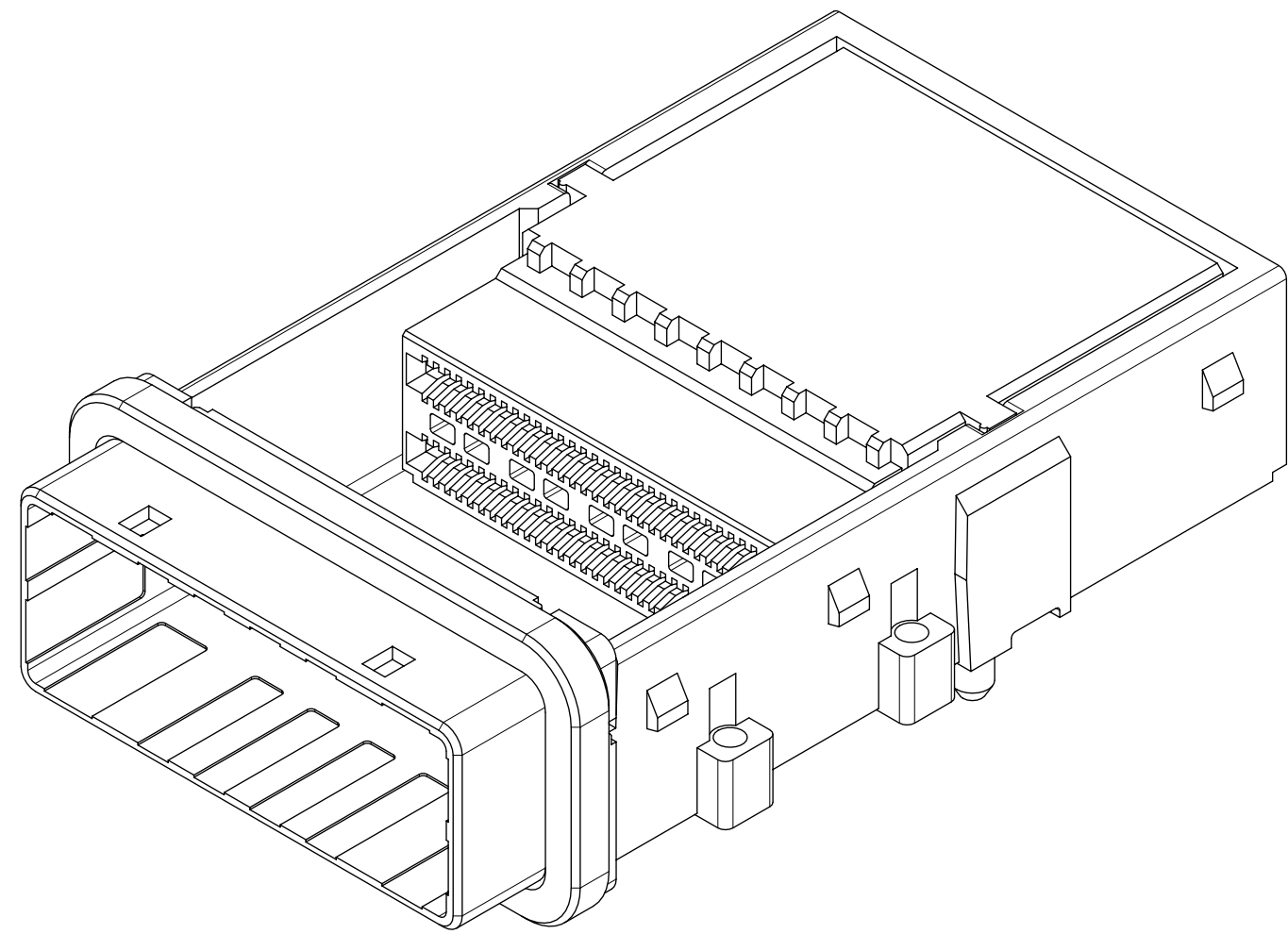
DOCUMENT NUMBER	DOC TYPE	DOC PART	REVISION
SD-173359-0001	PSD	000	B



1733590001 SHOWN
WITH EMI FINGERS AND EMI GASKET


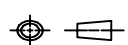


1733590002 SHOWN
WITHOUT EMI FINGERS AND GASKET



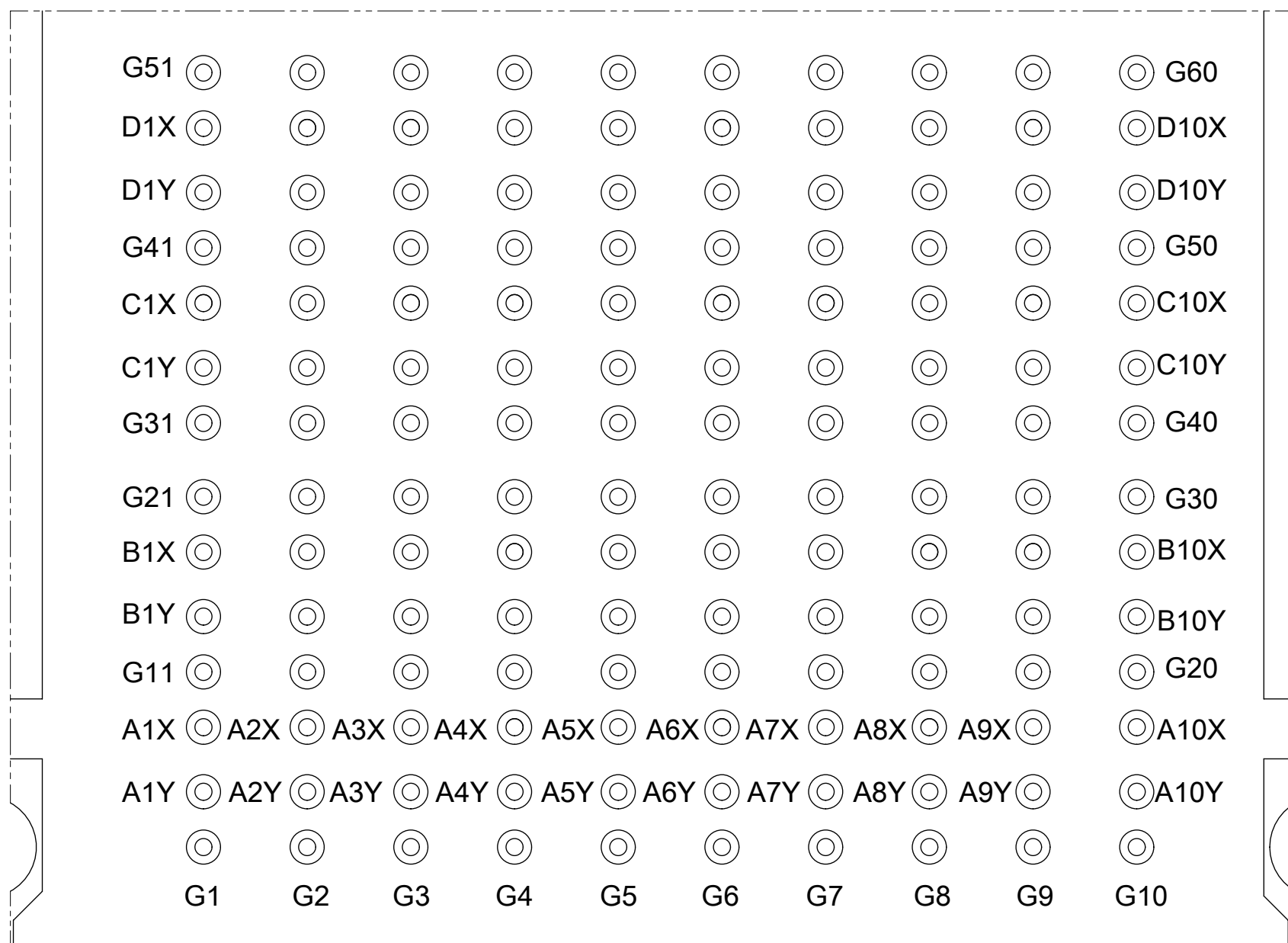
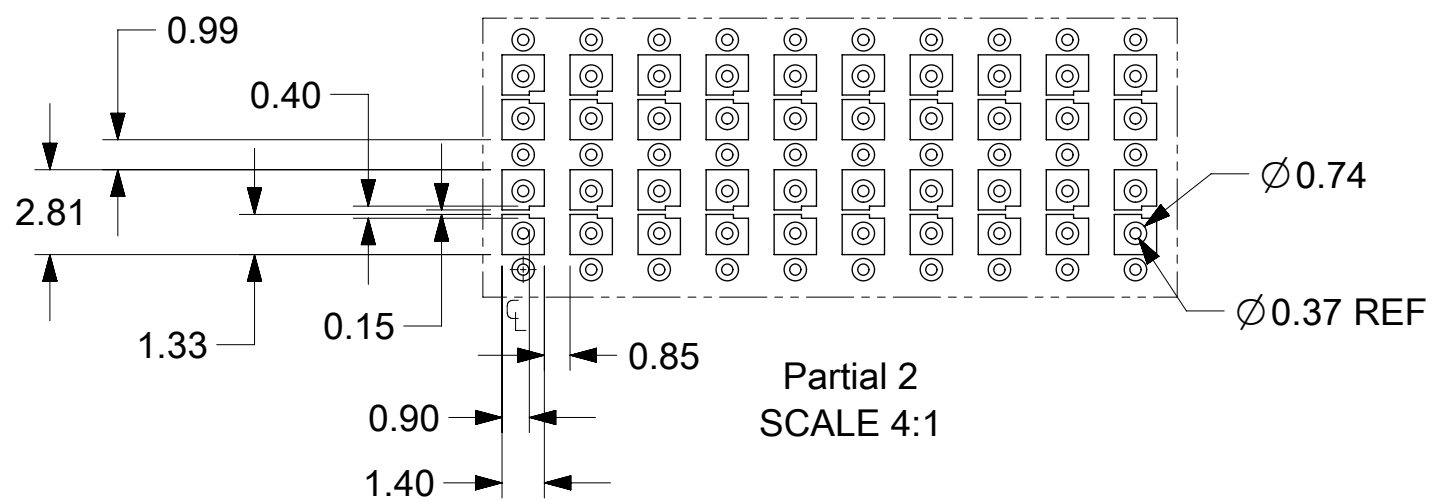
1733590004 SHOWN
WITHOUT EMI FINGERS AND WITH EMI GASKET

MATERIAL NUMBER	WITH EMI FINGERS	WITH EMI GASKET
1733590001	YES	YES
1733590002	NO	NO
1733590004	NO	YES

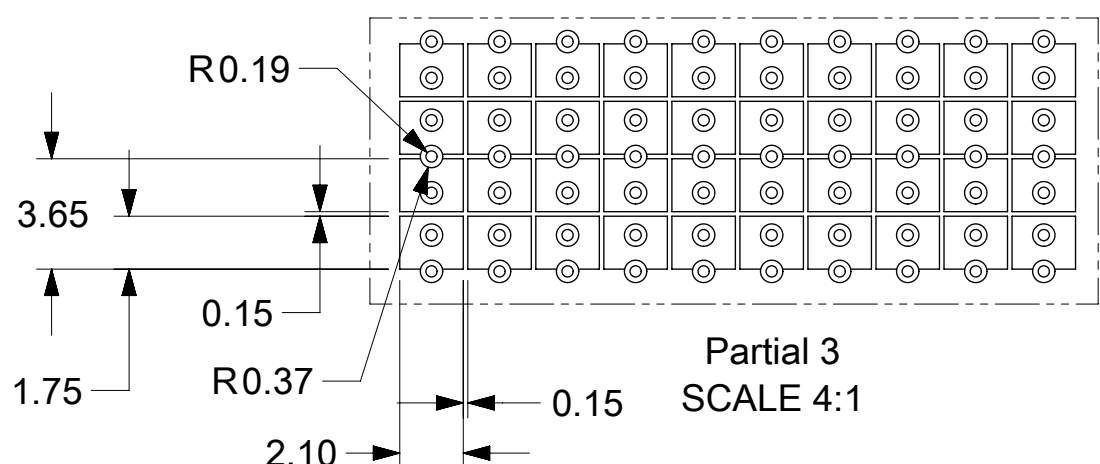
THIS DRAWING CONTAINS INFORMATION THAT IS PROPRIETARY TO MOLEX ELECTRONIC TECHNOLOGIES, LLC AND SHOULD NOT BE USED WITHOUT WRITTEN PERMISSION											
SYMBOLS		DIMENSION UNITS		SCALE		CURRENT REV DESC:					
▽ = 0 ▽ = 0 ▽ = 0 ▽ = 0 ▽ = 0 ▽ = 0 ▽ = 0 ▽ = 0 ▽ = 0		mm		GENERAL TOLERANCES (UNLESS SPECIFIED)		EC NO: 647299 DRWN: TTAO03 2020/09/02 CHK'D: WZHAO21 2020/10/28 APPR: WZHAO21 2020/10/28					
▽ = 0 ▽ = 0 ▽ = 0 ▽ = 0 ▽ = 0 ▽ = 0 ▽ = 0 ▽ = 0 ▽ = 0		ANGULAR TOL ± 0.5° 4 PLACES ± 3 PLACES ± 2 PLACES ± 0.25 1 PLACE ± 0 PLACES ±		DRAFT WHERE APPLICABLE MUST REMAIN WITHIN DIMENSIONS		THIRD ANGLE PROJECTION 		DRAWING C-SIZE		SERIES 173359	
DOCUMENT NUMBER SD-173359-0001		DOC TYPE PSD		DOC PART 000		REVISION B		PRODUCT CUSTOMER DRAWING			
MATERIAL NUMBER SEE TABLE		CUSTOMER GENERAL MARKET		SHEET NUMBER 2 OF 5							

DOCUMENT STATUS	P1	RELEASE DATE	2020/10/28	04:29:08
-----------------	----	--------------	------------	----------

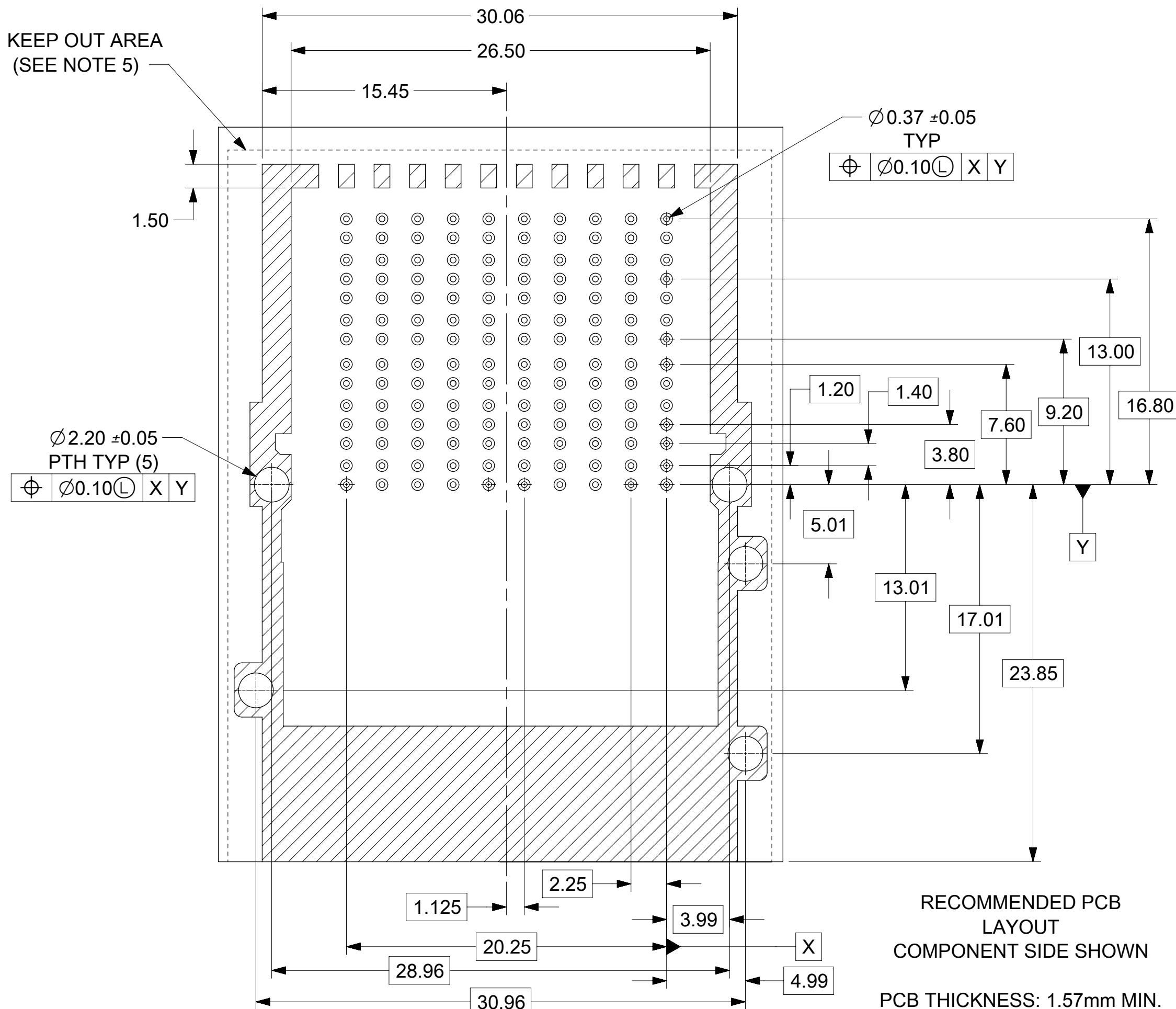
ABOVE AND BELOW SIGNAL LAYERS



TOP AND BOTTOM EMI LAYER AND ALL OTHER LAYERS WITHIN BOARD

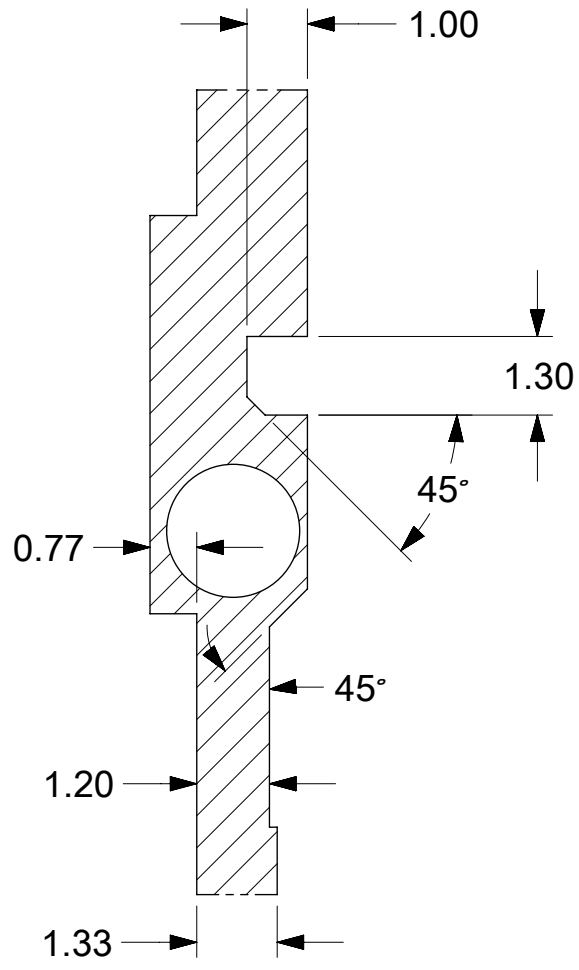


- NOTES:
1. GROUNDS G1-G30 ARE ALL COMMON; GROUNDS G31-G60 ARE ALL COMMON;
 2. CROSS-HATCHED AREA TO BE CONDUCTIVE ON THE PCB;
 3. RECOMMENDED DRILL SIZE FOR $0.37\varnothing$ FINISHED PTH IS $0.457\text{mm}\varnothing$ ($.018\text{in}\varnothing$ (#77. DRILL));
 4. RECOMMENDED ANNULAR RING AROUND $0.37\varnothing$ FINISHED PTH IS $0.73\varnothing$;
 5. KEEP OUT AREA EXEPTION: WHEN ADJACENT CONNECTOR IS PRESENT IT WILL INTERLEAVE SHOWN KEEP OUT AREA).

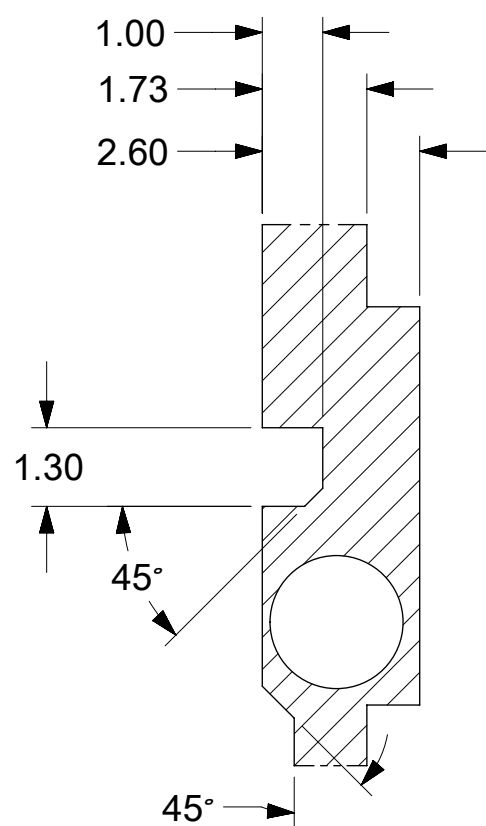


THIS DRAWING CONTAINS INFORMATION THAT IS PROPRIETARY TO MOLEX ELECTRONIC TECHNOLOGIES, LLC AND SHOULD NOT BE USED WITHOUT WRITTEN PERMISSION											
SYMBOLS		DIMENSION UNITS		SCALE		CURRENT REV DESC:					
$\nabla = 0$ $\nabla = 0$ $\nabla = 0$ $\nabla = 0$ $\nabla = 0$ $\nabla = 0$ $\nabla = 0$ $\nabla = 0$ $\nabla = 0$ $\nabla = 0$		mm		GENERAL TOLERANCES (UNLESS SPECIFIED)		EC NO: 647299 DRWN: TTAO03 2020/09/02 CHK'D: WZHAO21 2020/10/28 APPR: WZHAO21 2020/10/28 INITIAL REVISION: DRWN: MHANUMAPPARE 2016/11/29 APPR: SMILLER 2017/02/14					
$\nabla = 0$ $\nabla = 0$ $\nabla = 0$ $\nabla = 0$ $\nabla = 0$ $\nabla = 0$ $\nabla = 0$ $\nabla = 0$ $\nabla = 0$ $\nabla = 0$		ANGULAR TOL $\pm 0.5^\circ$ 4 PLACES \pm 3 PLACES \pm 2 PLACES ± 0.25 1 PLACE \pm 0 PLACES \pm		DRAFT WHERE APPLICABLE MUST REMAIN WITHIN DIMENSIONS		THIRD ANGLE PROJECTION 		DRAWING SERIES C-SIZE 173359		PRODUCT CUSTOMER DRAWING DOCUMENT NUMBER SD-173359-0001 DOC TYPE DOC PART REVISION PSD 000 B	
DOCUMENT STATUS P1 RELEASE DATE 2020/10/28 04:29:08		MATERIAL NUMBER SEE TABLE		CUSTOMER GENERAL MARKET		SHEET NUMBER 3 OF 5					

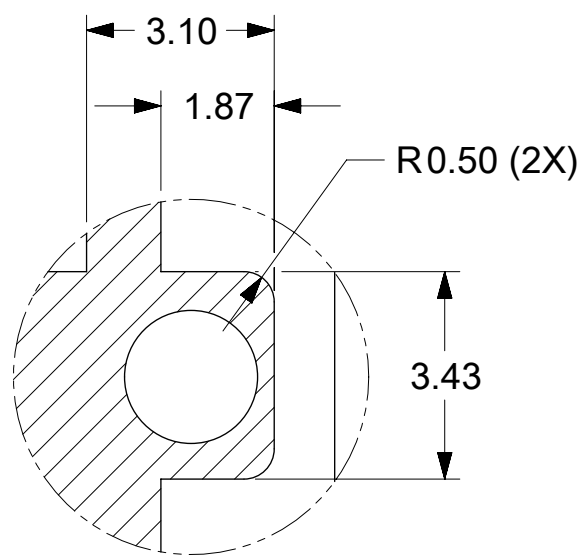
KEEP OUT AREAS



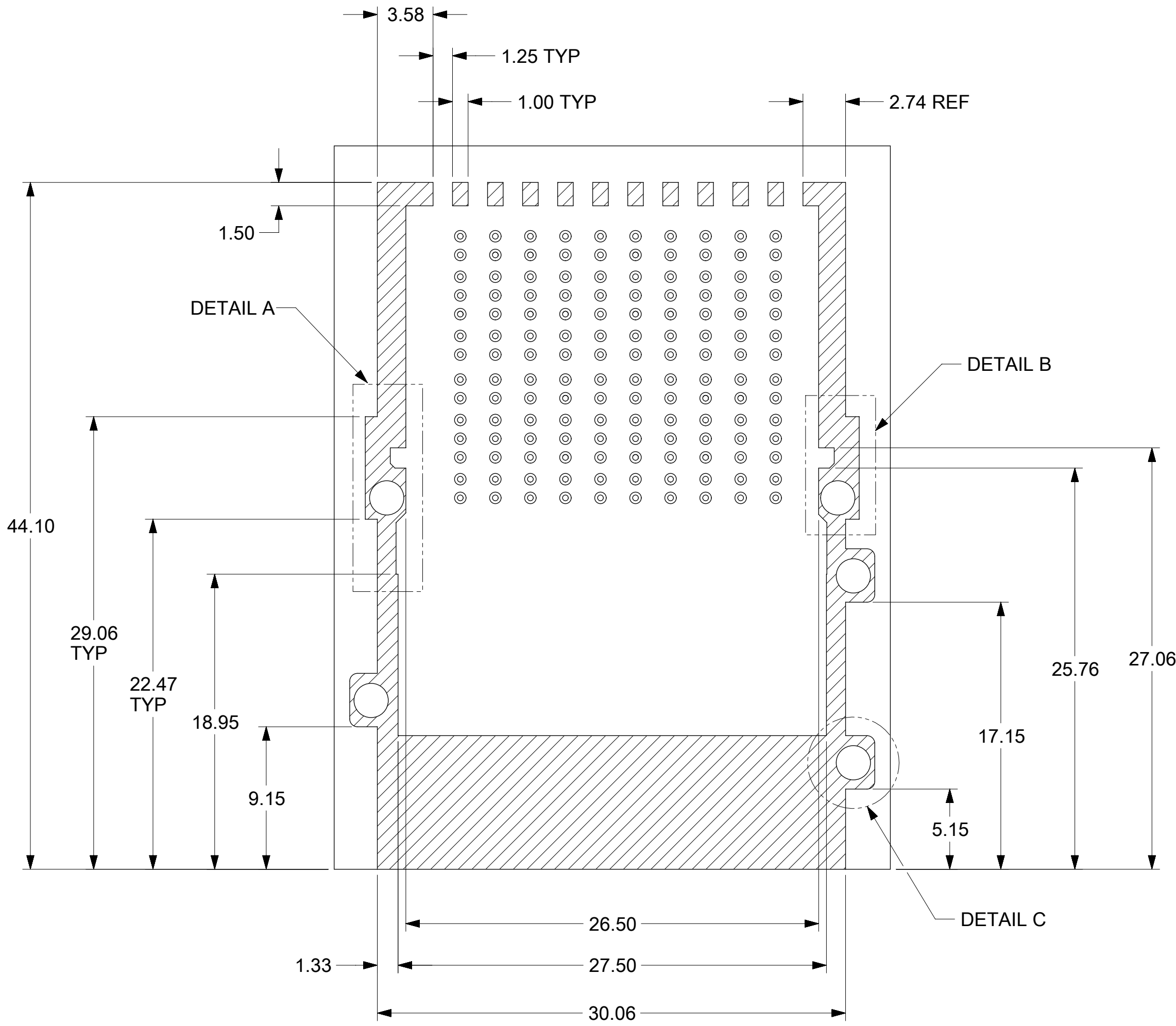
DETAIL A
SCALE 8:1



DETAIL B
SCALE 8:1

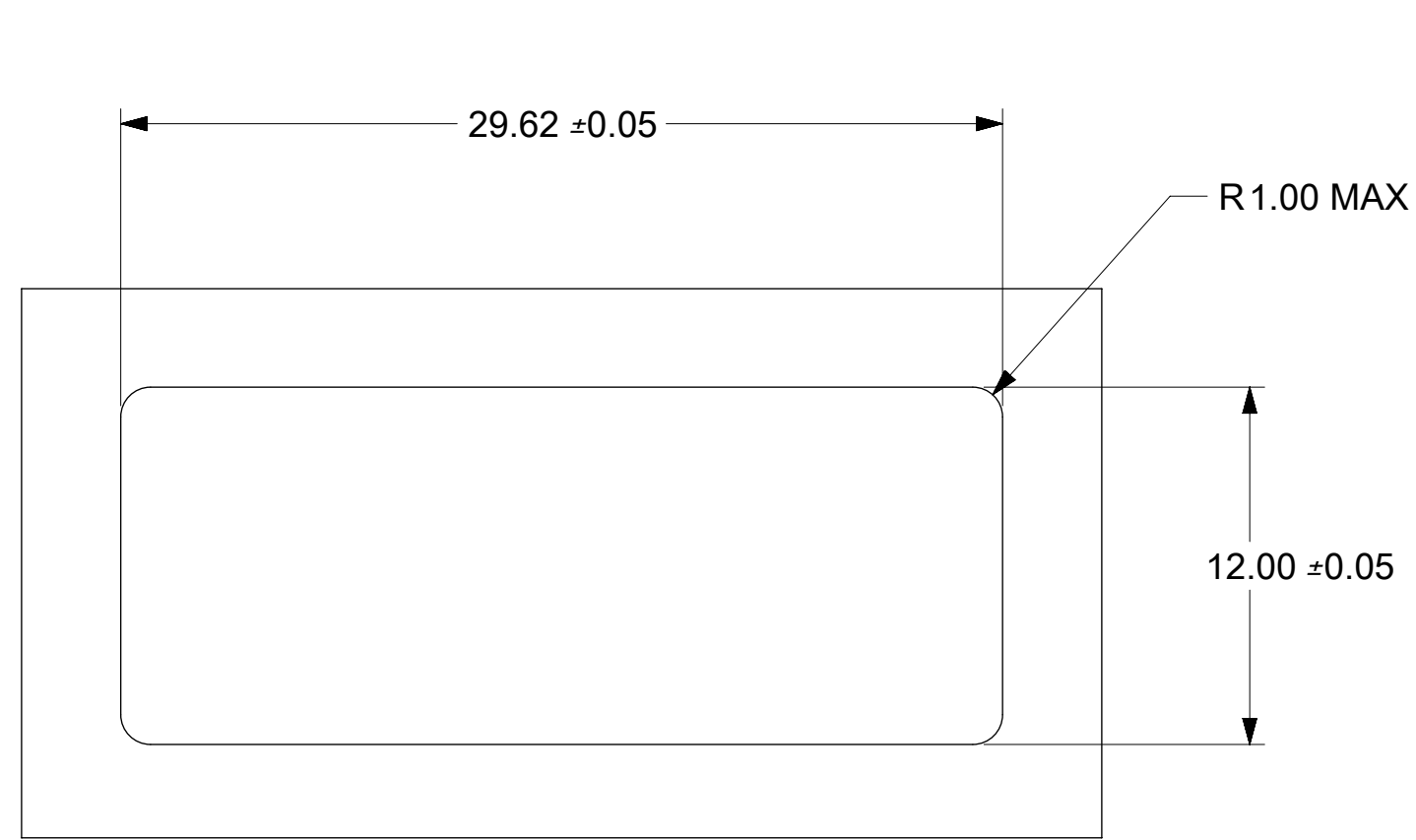


DETAIL C
SCALE 8:1
(3 PLACES)

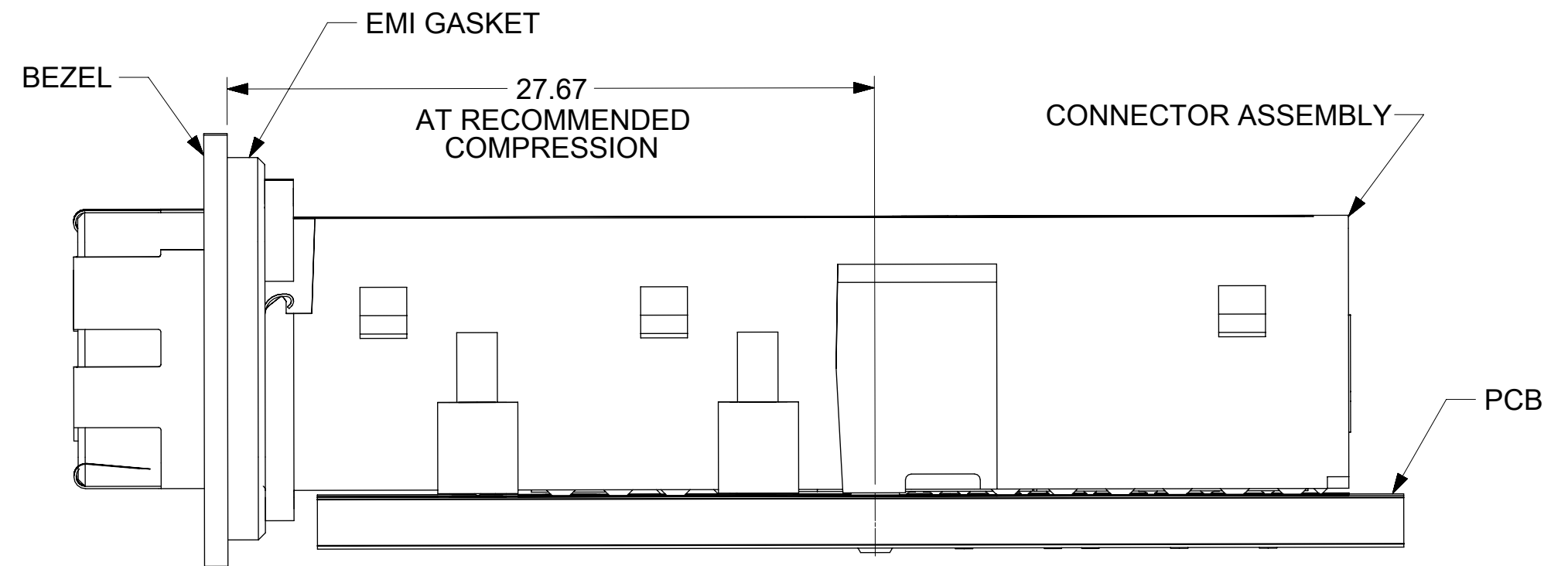
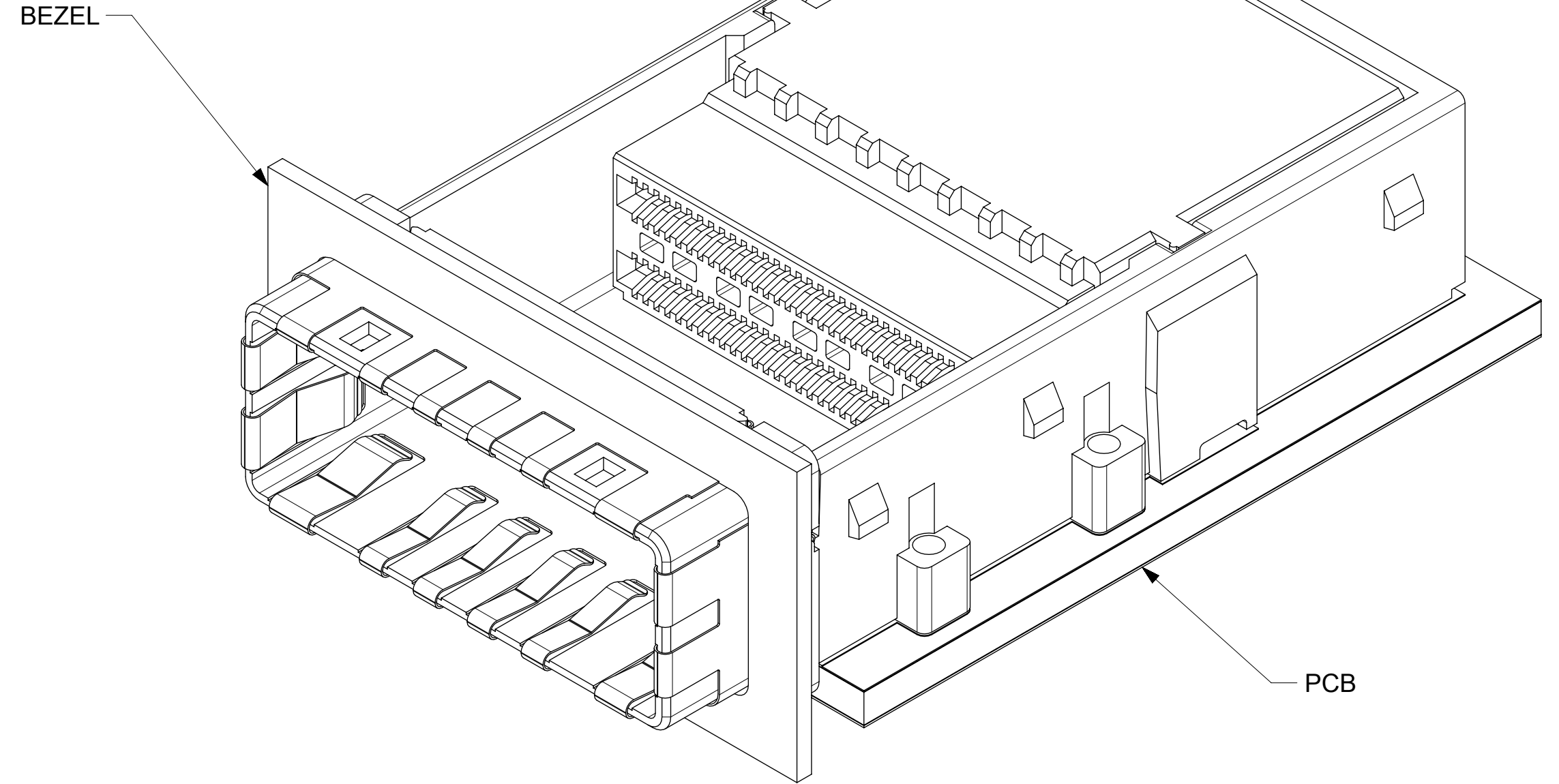
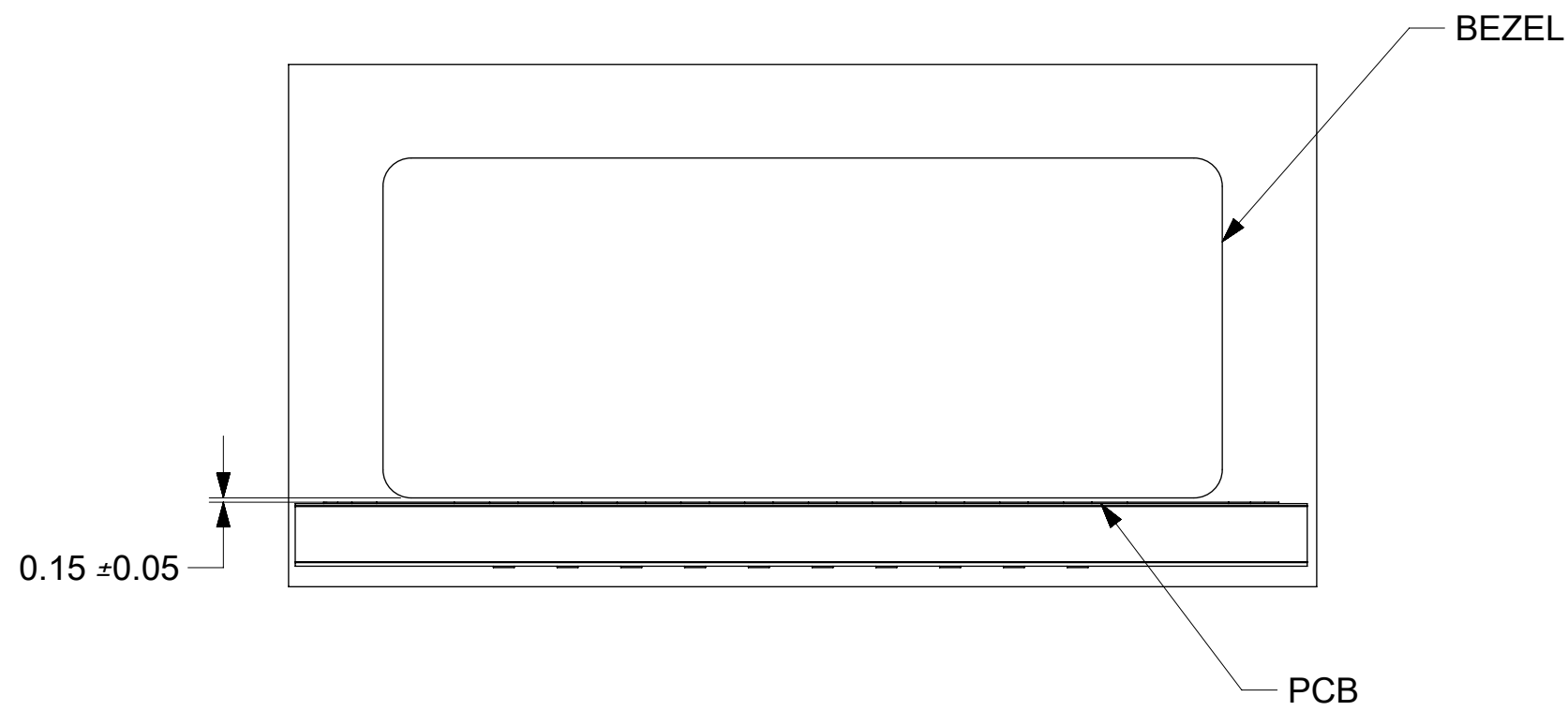


THIS DRAWING CONTAINS INFORMATION THAT IS PROPRIETARY TO MOLEX ELECTRONIC TECHNOLOGIES, LLC AND SHOULD NOT BE USED WITHOUT WRITTEN PERMISSION											
SYMBOLS		DIMENSION UNITS		SCALE		CURRENT REV DESC:					
▽ = 0 ▽ = 0 ▽ = 0 ▽ = 0 ▽ = 0 ▽ = 0 ▽ = 0 ▽ = 0 ▽ = 0 ▽ = 0		mm				EC NO: 647299 DRWN: TTAO03 2020/09/02 CHK'D: WZHAO21 2020/10/28 APPR: WZHAO21 2020/10/28					
▽ = 0 ▽ = 0 ▽ = 0 ▽ = 0 ▽ = 0 ▽ = 0 ▽ = 0 ▽ = 0 ▽ = 0 ▽ = 0		GENERAL TOLERANCES (UNLESS SPECIFIED)				INITIAL REVISION: DRWN: MHANUMAPPARE 2016/11/29 APPR: SMILLER 2017/02/14				ZCD 90 OHM 16X STYLE 1 ASSEMBLY	
▽ = 0 ▽ = 0 ▽ = 0 ▽ = 0 ▽ = 0 ▽ = 0 ▽ = 0 ▽ = 0 ▽ = 0 ▽ = 0		ANGULAR TOL ± 0.5°				PRODUCT CUSTOMER DRAWING				DOCUMENT NUMBER SD-173359-0001	
▽ = 0 ▽ = 0 ▽ = 0 ▽ = 0 ▽ = 0 ▽ = 0 ▽ = 0 ▽ = 0 ▽ = 0 ▽ = 0		4 PLACES ±				MATERIAL NUMBER SEE TABLE				DOC TYPE PSD	
▽ = 0 ▽ = 0 ▽ = 0 ▽ = 0 ▽ = 0 ▽ = 0 ▽ = 0 ▽ = 0 ▽ = 0 ▽ = 0		3 PLACES ±				CUSTOMER GENERAL MARKET				DOC PART 000	
▽ = 0 ▽ = 0 ▽ = 0 ▽ = 0 ▽ = 0 ▽ = 0 ▽ = 0 ▽ = 0 ▽ = 0 ▽ = 0		2 PLACES ± 0.25				SHEET NUMBER 4 OF 5				REVISION B	
▽ = 0 ▽ = 0 ▽ = 0 ▽ = 0 ▽ = 0 ▽ = 0 ▽ = 0 ▽ = 0 ▽ = 0 ▽ = 0		1 PLACE ±				DRAFT WHERE APPLICABLE MUST REMAIN WITHIN DIMENSIONS		THIRD ANGLE PROJECTION 		DRAWING C-SIZE	
▽ = 0 ▽ = 0 ▽ = 0 ▽ = 0 ▽ = 0 ▽ = 0 ▽ = 0 ▽ = 0 ▽ = 0 ▽ = 0		0 PLACES ±				SERIES 173359		DRAWING C-SIZE		SERIES 173359	

PANEL MOUNT CONFIGURATION



BEZEL CUT-OUT
(NOT SUPPLIED)



ASSEMBLED VIEW

NOTE:
1. MINIMUM PITCH BETWEEN TWO ADJACENT CONNECTORS IS 34mm;
2. BEZEL THICKNESS = 0.80 TO 2.4 mm.

THIS DRAWING CONTAINS INFORMATION THAT IS PROPRIETARY TO MOLEX ELECTRONIC TECHNOLOGIES, LLC AND SHOULD NOT BE USED WITHOUT WRITTEN PERMISSION											
SYMBOLS		DIMENSION UNITS	SCALE	CURRENT REV DESC:			molex				
▽ = 0	mm	GENERAL TOLERANCES (UNLESS SPECIFIED)			EC NO: 647299			ZCD 90 OHM 16X STYLE 1 ASSEMBLY			
▽ = 0	ANGULAR TOL ± 0.5°			DRWN: TTAO03 2020/09/02							
▽ = 0	4 PLACES ±			CHK'D: WZHAO21 2020/10/28			PRODUCT CUSTOMER DRAWING				
▽ = 0	3 PLACES ±			APPR: WZHAO21 2020/10/28							
▽ = 0	2 PLACES ± 0.25			INITIAL REVISION:			DOCUMENT NUMBER: SD-173359-0001 DOC TYPE: PSD DOC PART: 000 REVISION: B				
▽ = 0	1 PLACE ±			DRWN: MHANUMAPPARE 2016/11/29							
▽ = 0	0 PLACES ±			APPR: SMILLER 2017/02/14			MATERIAL NUMBER: SEE TABLE CUSTOMER: GENERAL MARKET SHEET NUMBER: 5 OF 5				
▽ = 0	DRAFT WHERE APPLICABLE MUST REMAIN WITHIN DIMENSIONS			THIRD ANGLE PROJECTION							
▽ = 0				DRAWING: C-SIZE							
					SERIES: 173359						