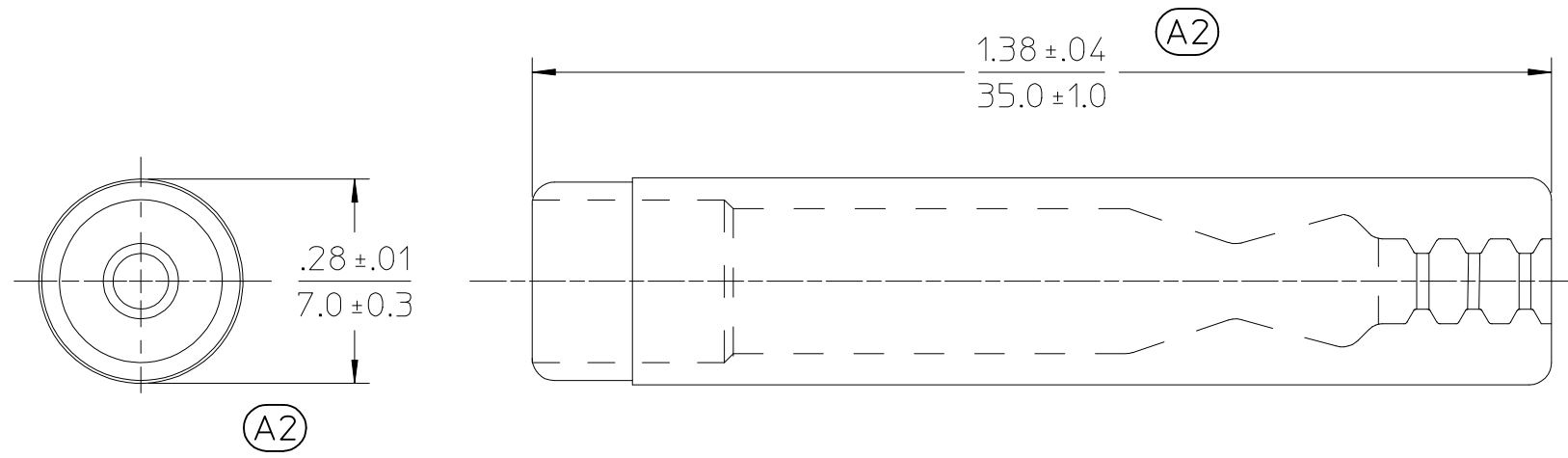


| | | |
|-----------------|--------------------|----------------------|
| METERIAL NUMBER | ENGINEERING NUMBER | COLOR |
| 191610334 | SPR-1 | SEMI-TRASPARENT TEAL |
| 191610670 | SPR-1-CL | TRASPARENT CLEAR |



- NOTES:
1. MATERIAL: PVC
 2. COLOR: SEE CHART.
 3. PARTS ARE ROHS COMPLIANT.

ORIGINALLY DRAWN
BY BRE 2003/08/07

| | | | | | | | | | | |
|--|---------------------|---|----------------|--------------------------|------------------------|--------------------|---|------------------------|--------|--|
| UPDATE DIM TOL EC NO: IPG2016-1554 DRWN: GROJAS01 2016/05/24 CHKD: APPR: JMACNEIL 2016/05/31 | QUALITY SYMBOLS | GENERAL TOLERANCES (UNLESS SPECIFIED) | | DIMENSION STYLE IN/MM | | SCALE 4:1 | DESIGN UNITS INCH | THIRD ANGLE PROJECTION | | |
| | | 4 PLACES | ± --- | ± --- | DRAWN BY GROJAS01 | DATE 2014/12/22 | TITLE SPLASH PROOF INSULATOR FEMALE RECEPTACLE 22-14 AWG | | | |
| | | 3 PLACES | ± --- | ± .005 | CHECKED BY JMACNEIL | DATE 2014/12/22 | | | | |
| | | 2 PLACES | ± 0.25 | ± .010 | APPROVED BY | | DATE | | | |
| 1 PLACE | ± 0.13 | ± --- | MATERIAL NO. | | DATE | DOCUMENT NO. | | SHEET NO. | | |
| 0 PLACE | ± | ± | ANGULAR ± 1/2° | | SEE CHART | | SD-19161-025 | | 1 OF 1 | |
| DRAFT WHERE APPLICABLE MUST REMAIN WITHIN DIMENSIONS | | THIS DRAWING CONTAINS INFORMATION THAT IS PROPRIETARY TO MOLEX INCORPORATED AND SHOULD NOT BE USED WITHOUT WRITTEN PERMISSION | | | | | | | | |