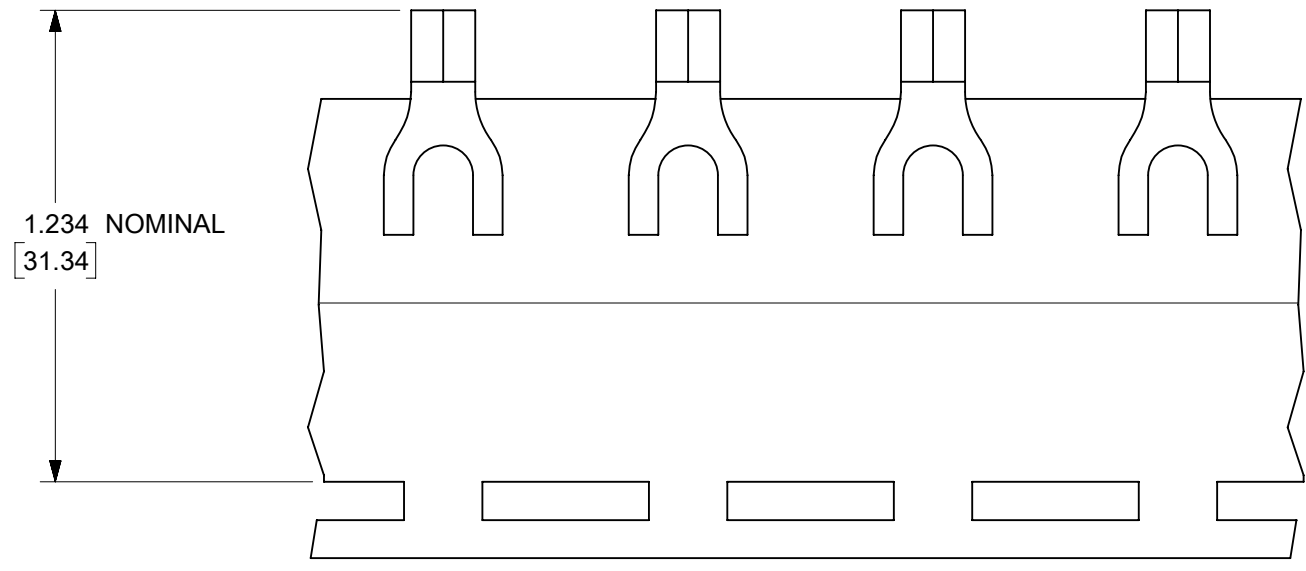
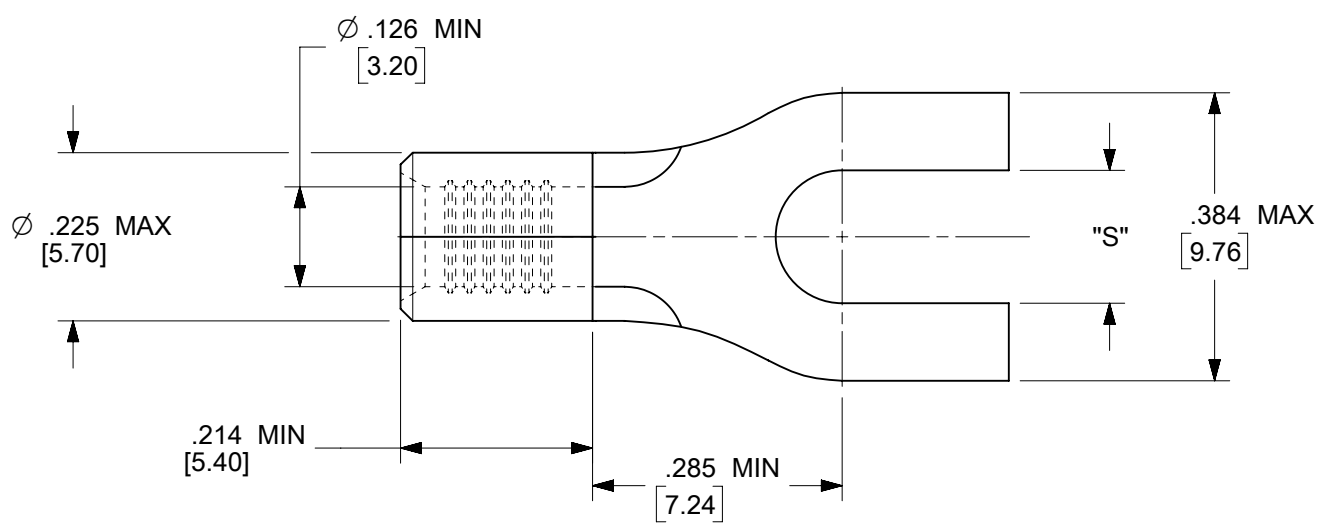
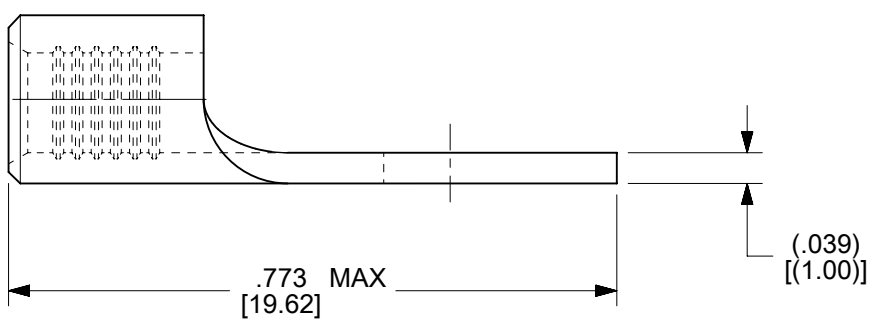


MATERIAL NO.	ENG. NO.	STUD SIZE	"S" MAX	DESCRIPTION
192030382	C-S-141-10	10	.215/5.46	LOOSE
192030477	19203-0477	10	.215/5.46	TAPE



PARTS ON TAPE



- NOTES:
1. MATERIAL: STEEL
 2. FINISH: NICKEL PLATED WITH OPTIONAL COPPER FLASH UNDERPLATING, IS ALLOWED FOR IMPROVED ADHESION.
 3. WIRE SIZE: 12-10 AWG (4.0-6.0 MM²)
 4. PART IS ROHS COMPLIANT.
 5. AMBIENT OPERATING TEMPERATURE UP TO 900 °F (483 °C).

THIS DRAWING CONTAINS INFORMATION THAT IS PROPRIETARY TO MOLEX ELECTRONIC TECHNOLOGIES, LLC AND SHOULD NOT BE USED WITHOUT WRITTEN PERMISSION										
FUNCTIONAL SYMBOLS	THIS DRAWING CONTAINS INFORMATION THAT IS PROPRIETARY TO MOLEX ELECTRONIC TECHNOLOGIES, LLC AND SHOULD NOT BE USED WITHOUT WRITTEN PERMISSION	SCALE		CURRENT REV DESC: REMASTERED IN ECTR AND UPDATED NOTE						
	IN/MM	1:1		<p>molex</p> <p>SPADE TONGUE TERMINAL, 12-10 AWG, KRIMPTITE, 900 DEG F (483 DEG C)</p> <p>PRODUCT CUSTOMER DRAWING</p> <p>EC NO: 708789 DRWN: PAWANC 2022/05/12 CHKD: DMYRICK 2022/06/01 APPR: JMACNEIL 2022/06/02</p> <p>INITIAL REVISION: DRWN: DMYRICK 2005/04/07 APPR: RDEROSS 2005/04/07</p>						
GENERAL TOLERANCES (UNLESS SPECIFIED)										
	MM	INCH								
4 PLACES	±	±								
3 PLACES	±	±								
DIVISIONAL SYMBOLS	2 PLACES	±	±	DOCUMENT NUMBER						
	1 PLACE	±	±	SD-19203-022						
	0 PLACES	±	±	DOC TYPE		DOC PART		REVISION		
	ANGULAR TOL ± °			PSD		001		C1		
DRAFT WHERE APPLICABLE MUST REMAIN WITHIN DIMENSIONS			THIRD ANGLE PROJECTION		DRAWING		SERIES		MATERIAL NUMBER	
			B-SIZE		19203		SEE CHART		CUSTOMER	
							GENERAL MARKET		SHEET NUMBER	
									1 OF 1	