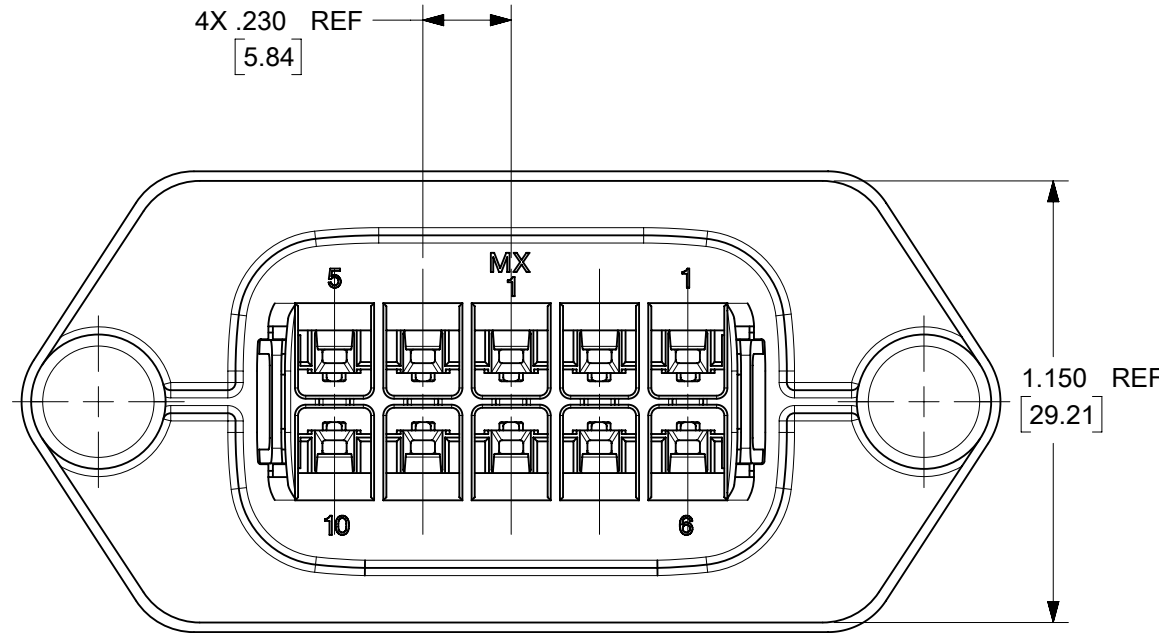
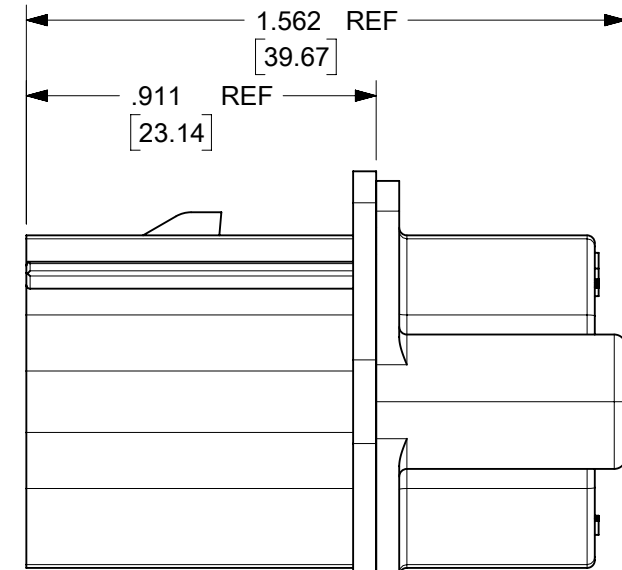
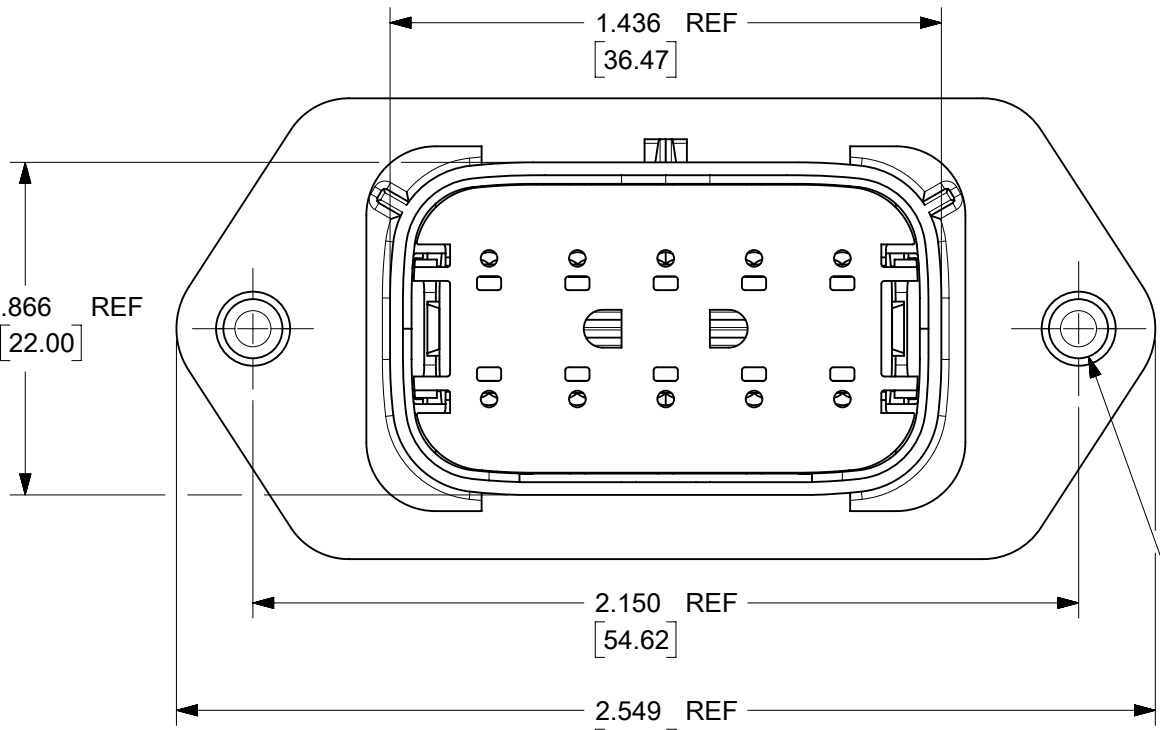


2X Ø .193 [4.90] SCALE 1:1

RECOMMENDED PANEL MOUNT OPENING  
MAX PANEL THK .080/2.03



2X Ø .154 X .030 X 45° CHAM [3.91] REF

- NOTES:
- MATERIALS: **(D)**  
HOUSING: SYNDIOTACTIC POLYSTYRENE (SPS), GLASS FILLED, UL94 V-0, COLOR: BLACK  
GASKET: EPDM RUBBER
  - PRODUCT SPECIFICATION: PS-19417-001.
  - PACKAGING SPECIFICATION: PK-19429-001.  
GASKETS, IF REQUIRED FOR THE ASSEMBLIES, ARE BULK PACKAGED IN A SEPARATE BAG.
  - MATES WITH: 19418 SERIES RECEPTACLE ASSEMBLIES.
  - USE CONNECTOR WITH MALE CRIMP TERMINAL: SERIES 19417.
  - RECOMMENDED MOUNTING HARDWARE: (2)#10 X .62/15.8 LONG PLASTIC THREAD CUTTING SCREWS. RECOMMENDED TORQUE 15-17 IN-LBS.  
SUGGESTED SOURCE: ITW SHAKEPROOF INDUSTRIAL BOSSCREW OR EQUIVALENT.
  - ASSEMBLY IS ROHS COMPLIANT.

194290038	YES
194290014	NO
MATERIAL NUMBER	GASKET

THIS DRAWING CONTAINS INFORMATION THAT IS PROPRIETARY TO MOLEX ELECTRONIC TECHNOLOGIES, LLC AND SHOULD NOT BE USED WITHOUT WRITTEN PERMISSION										
FUNCTIONAL SYMBOLS	THIS DRAWING CONTAINS INFORMATION THAT IS PROPRIETARY TO MOLEX ELECTRONIC TECHNOLOGIES, LLC AND SHOULD NOT BE USED WITHOUT WRITTEN PERMISSION	SCALE		CURRENT REV DESC: REDRAWN IN NX & HSG MATERIAL UPDATED						
	in/[mm]	2:1								
DIVISIONAL SYMBOLS	GENERAL TOLERANCES (UNLESS SPECIFIED)			EC NO: 690910						
	MM	INCH		DRWN: RMY02 2021/12/20						
4 PLACES	±			CHK'D: DMYRICK 2022/01/05						
3 PLACES	±		± 0.015	APPR: JMACNEIL 2022/01/06						
2 PLACES	±	0.38	±	INITIAL REVISION:						
1 PLACE	±		±	DRWN: DMYRICK 03/11/10						
0 PLACES	±		±	APPR: DTITUS 2010/10/18						
ANGULAR TOL			± 1.0°	THIRD ANGLE PROJECTION		DRAWING	SERIES	MATERIAL NUMBER	CUSTOMER	SHEET NUMBER
DRAFT WHERE APPLICABLE MUST REMAIN WITHIN DIMENSIONS				B-SIZE		19429	SEE CHART	GENERAL MARKET	1 OF 1	

**molex**

10 WAY PLUG PANEL MOUNT ASSEMBLY 22-14 AWG

PRODUCT CUSTOMER DRAWING			
DOCUMENT NUMBER	DOC TYPE	DOC PART	REVISION
SD-19429-004	PSD	001	D

DOCUMENT STATUS	P1	RELEASE DATE	2022/01/06	14:54:30
-----------------	----	--------------	------------	----------