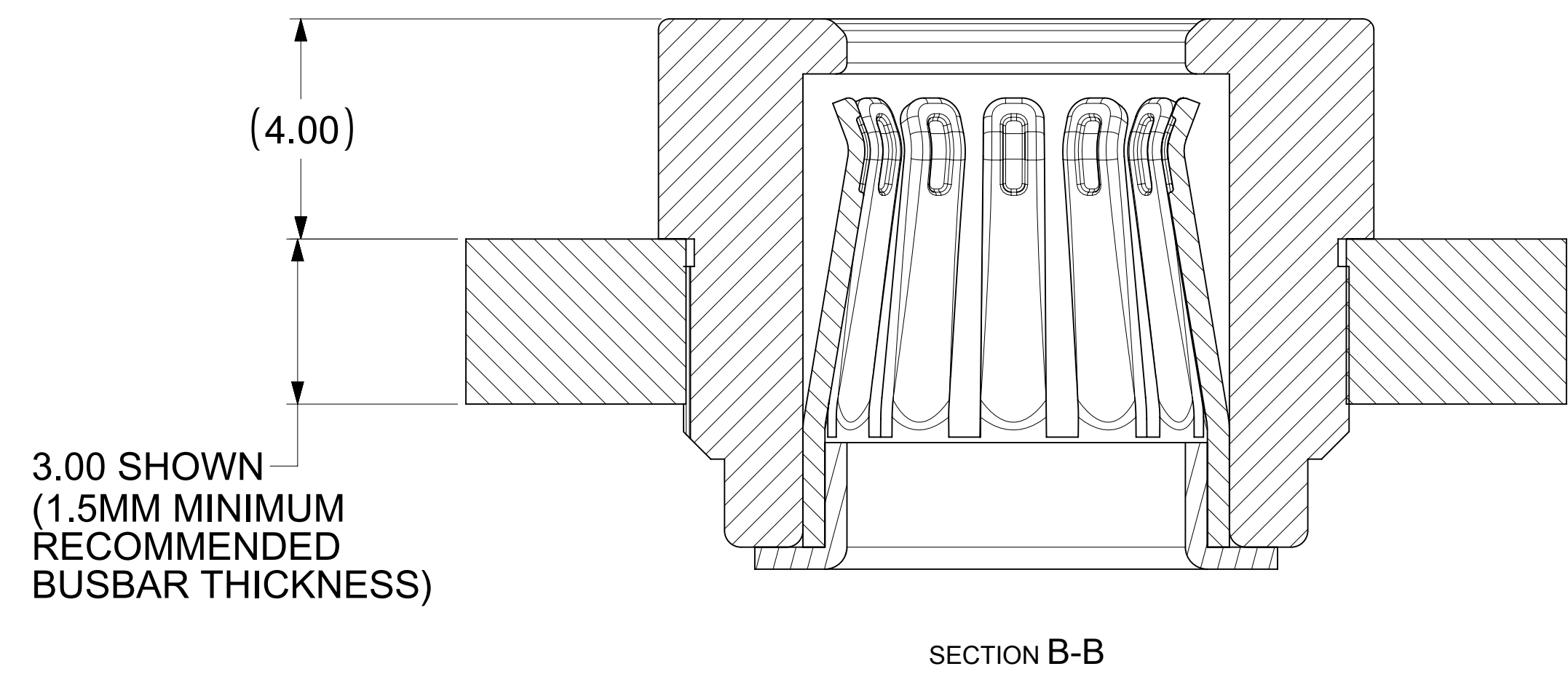


MATING PROFILE

- NOTES:**
- MATERIALS:**
 RETENTION CAP: STAINLESS STEEL
 PICK AND PLACE CAP: LCP UL94, V-0 COLOR BLACK
 BASE METAL: HIGH CONDUCTIVE COPPER ALLOY
 PLATING ON CONTACTS: 0.75 MICRON MIN GOLD OVER 1.27 MICRON MIN NICKEL
 PLATING ON BODY: 3.18 MICRON MIN SILVER OVER 1.27 MICRON MIN NICKEL
 - MATES WITH THE STANDARD PIN DRAWINGS:**
 - 6.0MM SMT DRAWING 2032630136-SD, MIN. MATING DISTANCE 6.75MM
 - 6.0MM PRESS FIT DRAWING 2032630006-SD, MIN MATING DISTANCE 6.5MM
 - 6.0MM SCREW MOUNT DRAWING 2032636185-SD, MIN MATING DISTANCE 9.5MM
 - PRODUCT SPECIFICATION:** 2043130006-PS
 - APPLICATION SPECIFICATION:** 2043130006-AS
 - PACKAGING SPECIFICATION:** 2043180006-PK.
 - SILVER COMPONENTS WILL BE SUPPLIED TARNISH FREE BUT MAY TARNISH OVER TIME.**
 - DATE CODE TO BE LASER MARKED APPROXIMATELY WHERE SHOWN USING DDYY FORMAT**



THIS DRAWING CONTAINS INFORMATION THAT IS PROPRIETARY TO MOLEX ELECTRONIC TECHNOLOGIES, LLC AND SHOULD NOT BE USED WITHOUT WRITTEN PERMISSION											
DIMENSION UNITS	SCALE	CURRENT REV DESC: UPDATED PCB/BUSBAR HOLE DIMENSION.									
mm	5:1	<p>6MM CST STANDARD SOCKET PRESSFIT</p> <p>PRODUCT CUSTOMER DRAWING</p>									
GENERAL TOLERANCES (UNLESS SPECIFIED)											
ANGULAR TOL	± 0.5°										
4 PLACES	±										
3 PLACES	±										
2 PLACES	± 0.25	EC NO: 716736	2021/05/11			DOCUMENT NUMBER			DOC TYPE	DOC PART	REVISION
1 PLACE	± 0.3	DRWN: RLOW	2019/02/19			2043160006-SD			PSD	000	B1
0 PLACES	±	CHK'D: SCS02	2022/08/04			MATERIAL NUMBER			CUSTOMER	SHEET NUMBER	
DRAFT WHERE APPLICABLE MUST REMAIN WITHIN DIMENSIONS		APPR: JJONIAK	2022/10/11			2043160006			GENERAL MARKET	1 OF 1	
		INITIAL REVISION:	2019/05/30			DRAWING			SERIES		
		DRWN: RLOW	2019/05/30			D-SIZE			204316		
		APPR: BPISZCZOR									