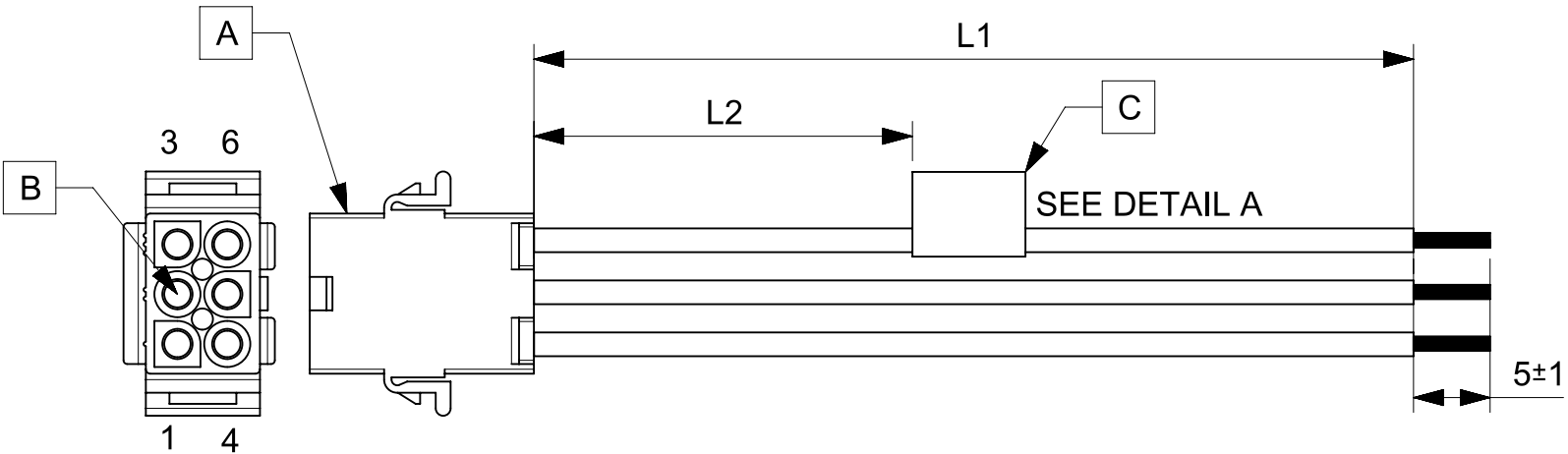


| ITEM | PART# | DESCRIPTION | QTY | UOM |
|------|----------|------------------------------------|-----|-----|
| A | 19092067 | 6CKT 2.36MM PLUG HOUSING 31916P201 | 1 | PC |
| B | 2092101 | 093 Male Term Chain Brs Tin 14-20 | 6 | PC |
| C | -- | PAPER PRINTED PAPER WHITE | 1 | PC |

| FROM | TO | DESCRIPTION | COLOR |
|------|----|-----------------------------------|-------|
| A1 | -- | 1X14AWG DISC PVC BK UL1015 HOOKUP | BLACK |
| A2 | -- | 1X14AWG DISC PVC BK UL1015 HOOKUP | BLACK |
| A3 | -- | 1X14AWG DISC PVC BK UL1015 HOOKUP | BLACK |
| A4 | -- | 1X14AWG DISC PVC BK UL1015 HOOKUP | BLACK |
| A5 | -- | 1X14AWG DISC PVC BK UL1015 HOOKUP | BLACK |
| A6 | -- | 1X14AWG DISC PVC BK UL1015 HOOKUP | BLACK |



| TABLE | | | |
|-------------|--------|---------|--------------------------------------|
| PART NUMBER | L1 | L2 | TITLE |
| 2162931061 | 150±8 | 63 REF | STANDARD .093 6 CIRCUIT P TO S 150MM |
| 2162931062 | 300±10 | 138 REF | STANDARD .093 6 CIRCUIT P TO S 300MM |
| 2162931063 | 600±10 | 288 REF | STANDARD .093 6 CIRCUIT P TO S 600MM |

- NOTES**
- Connector view shown is from mating side.
 - Free ends must be stripped, twisted & tinned. The length of tinning is 5±1mm. Tinning dia must be 2.4mm Max.
 - Label text must be 2mm max. in height with Arial font.
 - Label must be wrapped in Flag type on a single cable.

MOLEX P/N
MOLEX
BATCH WK/YR
DETAIL A

| REVISION | | | |
|------------|-----|-----------------|---------|
| DATE | REV | DESCRIPTION | CHANGER |
| 2020/06/22 | A | INITIAL RELEASE | ARAJU |

| | | | | | | | | |
|--|---|------------------------|---------------------------------------|--------|--|----------------|----------|--------------|
| FUNCTIONAL SYMBOLS FA = 0 FE = 0 FP = 0 | THIS DRAWING CONTAINS INFORMATION THAT IS PROPRIETARY TO MOLEX ELECTRONIC TECHNOLOGIES, LLC AND SHOULD NOT BE USED WITHOUT WRITTEN PERMISSION | | CURRENT REV DESC: | | | | | |
| | DIMENSION UNITS | SCALE | GENERAL TOLERANCES (UNLESS SPECIFIED) | | | | | |
| | mm | NTS | ANGULAR TOL ± ° | | | | | |
| | 4 PLACES ± | | EC NO: 643258 | | | | | |
| DIVISIONAL SYMBOLS | 3 PLACES ± | | DRWN: ARAJU 2020/06/22 | | <p>SEE TABLE</p> <p>PRODUCT CUSTOMER DRAWING</p> | | | |
| | 2 PLACES ± | | CHK'D: RDESAI01 2020/08/12 | | | | | |
| | 1 PLACE ± | | APPR: RDESAI01 2020/08/12 | | | | | |
| | 0 PLACES ± | | INITIAL REVISION: | | | | | |
| DRAFT WHERE APPLICABLE MUST REMAIN WITHIN DIMENSIONS | | THIRD ANGLE PROJECTION | DRAWING | SERIES | DOCUMENT NUMBER | DOC TYPE | DOC PART | REVISION |
| | | | A4-SIZE | 216293 | 2162931061 | PSD | 000 | A |
| | | | | | MATERIAL NUMBER | CUSTOMER | | SHEET NUMBER |
| | | | | | SEE TABLE | GENERAL MARKET | | 1 OF 1 |