

DO NOT SCALE DRAWING
DIMENSION IN METRIC

DWG. IO.
SD-57920-001

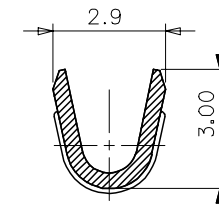
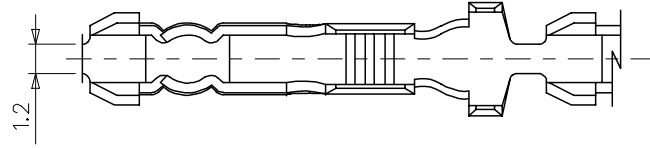
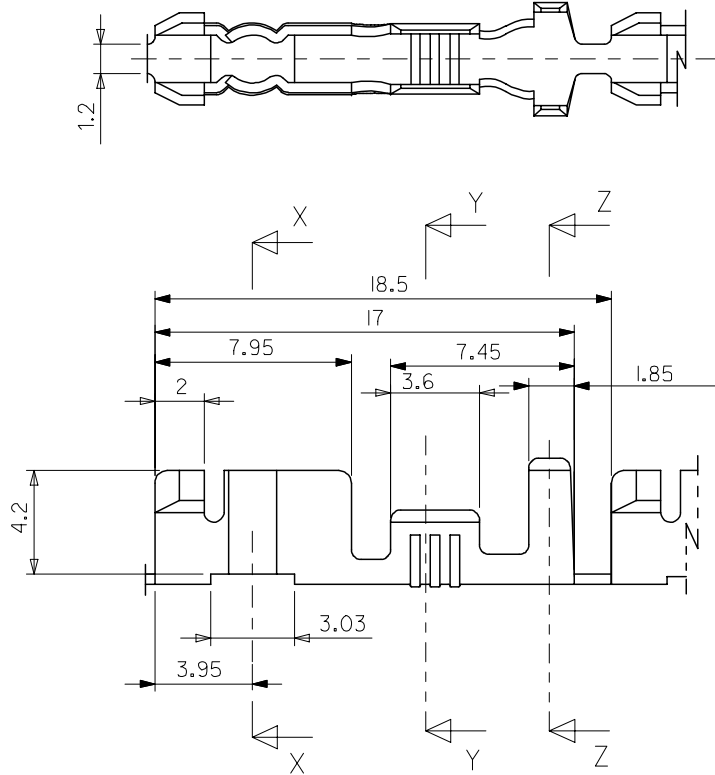
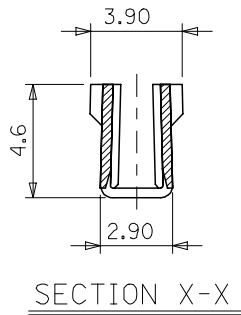
SIMILAR ITEM

PROJECT NO.

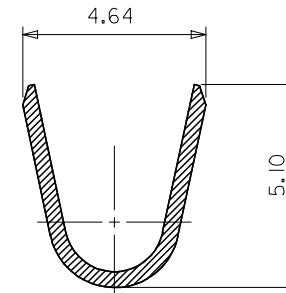
C

B

MATERIAL NO.	ENGINEERING NO.
579206002	57920-6002



SECTION Y-Y
(SCALE: 8:1)



SECTION Z-Z
(SCALE: 8:1)

NOTES

1. MATERIALS : PHOSPHOR BRONZE, 0.4mm THICK
2. FINISH : TIN-PLATING
3. APPLICABLE WIRE : AWG#18-16

NEW RELEASED EC NO. KOR2002-0093 DRWN: C.B.CHIN 02/03/21 CHK: W.Y.YANG APPR: C.W.LEE	DESCRIPTION	QUALITY SYMBOLS	GENERAL TOLERANCES: (UNLESS SPECIFIED)	SCALE 5:1	DESIGN UNITS <input checked="" type="checkbox"/> mm <input type="checkbox"/> INCH	THIRD ANGLE PROJECTION	DIMENSIONS: <input type="checkbox"/> mm <input type="checkbox"/> INCH <input checked="" type="checkbox"/> mm ONLY	SHT	REV	
		MAJOR = 0	mm	INCH	DRAWN BY & DATE W.Y.YANG 99/11/13	TITLE: CLUSTER TERMINAL (2.29 DIA. PIN)	MATERIAL NO. SEE CHART	DRAWING NO. SD-57920-001	SHEET NO. 1 OF 1	
		CRITICAL = 0	4 PLACES	±0.	±.					CHECKED BY & DATE B.K.CHOI 99/11/13
			3 PLACES	±0.25	±.					APPROVED BY & DATE C.W.LEE 99/11/13
REV			ANGULAR: ± °	CAD FILENAME S57920.dgn	MOLEX INCORPORATED					
A			DRAFT WHERE APPLICABLE MUST REMAIN WITHIN DIMENSIONS	THIS DRAWING CONTAINS INFORMATION THAT IS PROPRIETARY TO MOLEX INCORPORATED AND SHOULD NOT BE USED WITHOUT WRITTEN PERMISSION.				SIZE B		

8

7

6

5

4

3

2

1

F

E

D

C

B

A

8

7

6

5

4

3

2

MX-A3