

PLEASE CHECK WWW.MOLEX.COM FOR LATEST PART INFORMATION

Part Number: **0760201006**
Status: **Active**
Overview: GbX I-Trac Backplane Connector System
Description: GbX I-Trac Right-Angle Receptacle Module, 1.85mm by 3.70mm Pitch, Unguided, 7 Row, 6 Columns, 84 Circuits, Lead-Free

Documents:

[3D Model](#) [Packaging Specification PK-70873-607-001 \(PDF\)](#)
[Drawing \(PDF\)](#) [RoHS Certificate of Compliance \(PDF\)](#)
[Product Specification PS-75710-999-001 \(PDF\)](#)

Agency Certification

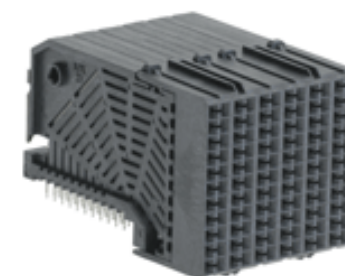
UL E29179

General

Product Family Backplane Connectors
 Series [76020](#)
 Application Coplanar, Daughtercard
 Component Type PCB Receptacle
 Data Rate 12.0 Gbps
 Overview [GbX I-Trac Backplane Connector System](#)
 Product Name GbX I-Trac
 Taxonomy Backplane Connectors
 UPC 822350885188

Physical

Circuits (Loaded) 84
 Circuits (maximum) 84
 Color - Resin Black
 Durability (mating cycles max) 200
 First Mate / Last Break No
 Flammability 94V-0
 Guide to Mating Part No
 Keying to Mating Part None
 Material - Metal High Performance Alloy (HPA)
 Material - Plating Mating Gold
 Material - Plating Termination Tin
 Material - Resin High Temperature Thermoplastic
 Net Weight 9.344/g
 Number of Columns 6
 Number of Pairs 4, Open Pin Field
 Number of Rows 7
 Orientation Right Angle
 PC Tail Length 2.00mm
 PCB Locator No
 PCB Retention None
 PCB Thickness - Recommended 1.60mm
 Packaging Type Tray
 Pitch - Mating Interface 1.85mm, 3.70mm
 Pitch - Termination Interface 1.00mm, 2.70mm
 Plating min - Mating 0.762µm
 Plating min - Termination 0.762µm
 Polarized to PCB No
 Stackable Yes
 Surface Mount Compatible (SMC) Yes
 Temperature Range - Operating -55° to +80°C
 Termination Interface: Style Through Hole - Compliant Pin



Series image - Reference only

EU ELV

Not Relevant

EU RoHS

Compliant

REACH SVHC

Not Contained Per -
 D(2022)4187-DC (10
 June 2022)

Halogen-Free

Status

Low-Halogen

For more information, please visit [Contact US](#)

China ROHS

ELV

RoHS Phthalates

Green Image

Not Relevant

Not Contained

Search Parts in this Series

[76020](#) Series

Mates With

[76015](#) GbX I-Trac Vertical Header Module.
[76011](#) GbX I-Trac Right Angle Header
 Module

Use With

[78234](#) GbX I-Trac Right Angle Power
 Header. [76153](#) Pirate Cannon Wide Guide
 Module

Electrical

Current - Maximum per Contact	1.0A
Real Signals (per 25mm)	48
Shield Type	N/A
Shielded	No
Voltage - Maximum	120V AC (RMS)/DC

Solder Process Data

Lead-freeProcess Capability	N/A
-----------------------------	-----

Material Info**Reference - Drawing Numbers**

Packaging Specification	PK-70873-607-001
Product Specification	PS-75710-999-001
Sales Drawing	SD-76020-001-001

This document was generated on 01/02/2023

PLEASE CHECK WWW.MOLEX.COM FOR LATEST PART INFORMATION