

RUGGED HIGH-SPEED STRIPS

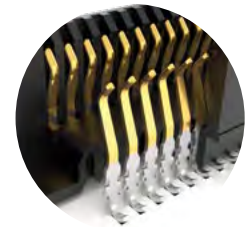


NRZ	PAM4
28 Gbps	56 Gbps

FEATURES & BENEFITS

Edge Rate® rugged high-speed connector strips are designed for high speed, high cycle applications, and enabled by Samtec's signal integrity-optimized Edge Rate® contact system.

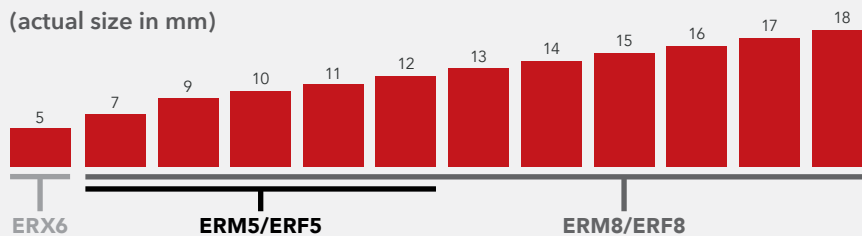
- Choice of 0.50 mm, 0.635 mm or 0.80 mm pitch
- 0.50 mm pitch system offers up to 40% PCB space savings vs. 0.80 mm pitch
- 0.635 mm pitch system with extremely slim 2.5 mm body width
- Rugged latching, locking and 360° shielding
- Up to 1.5 mm contact wipe; robust when "zippered" during unmating
- Compatible with UMPT/UMPS for power/signal flexibility



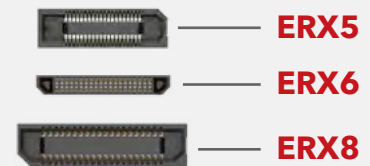
Signal integrity-optimized Edge Rate® contact system reduces broadside coupling

EDGE RATE® STACK HEIGHT FLEXIBILITY

(actual size in mm)



Sockets shown actual size with 40 total positions



KEY SPECIFICATIONS

SERIES	PITCH	STACK HEIGHTS	TOTAL PINS / PAIRS	INSULATOR MATERIAL	TERMINAL MATERIAL	PLATING	OPERATING TEMP RANGE	LEAD-FREE SOLDERABLE
ERM5 / ERF5	0.50 mm	7-12 mm	20-150	Black LCP	Phosphor Bronze or BeCu (ERM5), BeCu (ERF5)	Au or Sn over 50 μ" (1.27 μm) Ni	-55 °C to +125 °C	Yes
ERM6 / ERF6	0.635 mm	5 mm	20-120		Copper Alloy			
ERM8 / ERF8	0.80 mm	7-18 mm	10-200		Phosphor Bronze or BeCu (ERM8), BeCu (ERF8)			

(0.635 mm) .025" PITCH • RUGGED HIGH-SPEED HEADERS & SOCKETS

ERM6 - **POSITIONS PER ROW** - **01.5** - **PLATING OPTION** - **DV** - **A** - **OPTION** - **K** - **"X"R**

-10, -20, -30,
-40, -50, -60
(Standard Sizes)

-L
= 10 μ" (0.25 μm)
Gold on contact,
Matte Tin on tail

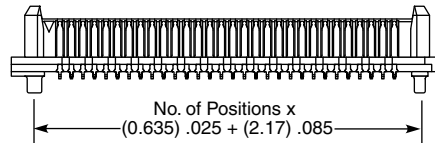
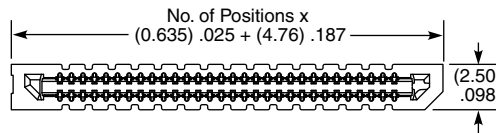
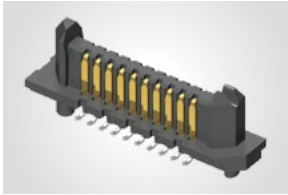
(Leave Blank for
No Weld Tab Pin)

-WT
= Weld Tab

-TR
= Tape & Reel

-FR
= Full Reel Tape & Reel
(must order maximum quantity
per reel; contact Samtec for
quantity breaks)

ERM6
Board Mates:
ERM6



MATED HEIGHT*

ERF6 LEAD STYLE	ERM6 LEAD STYLE
	-01.5
-03.5	(5.00) .197

*Processing conditions will affect mated height.

View complete specifications at: samtec.com?ERM6

ERF6 - **POSITIONS PER ROW** - **03.5** - **PLATING OPTION** - **DV** - **A** - **OPTION** - **K** - **"X"R**

-10, -20, -30,
-40, -50, -60
(Standard Sizes)

-L
= 10 μ" (0.25 μm)
Gold on contact,
Matte Tin on tail

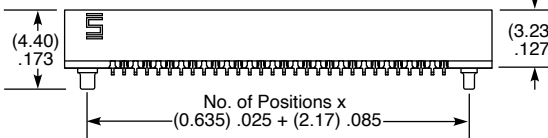
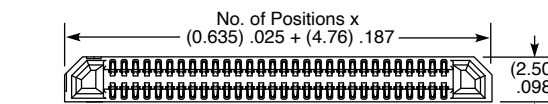
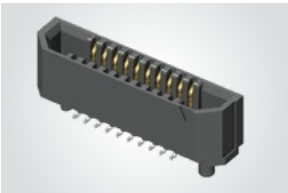
(Leave Blank for
No Weld Tab Pin)

-WT
= Weld Tab

-TR
= Tape & Reel

-FR
= Full Reel Tape & Reel
(must order maximum quantity
per reel; contact Samtec for
quantity breaks)

ERF6
Board Mates:
ERM6



MATED HEIGHT*

ERF6 LEAD STYLE	ERM6 LEAD STYLE
	-01.5
-03.5	(5.00) .197

*Processing conditions will affect mated height.

View complete specifications at: samtec.com?ERF6

Notes:

Kapton pad and tape & reel packaging are standard.
Some lengths, styles and options are non-standard, non-returnable.