

REVISION AF

PLOT SCALE: 1=.525/ DIMSCALE: 1=.400

PATENT NUMBERS
6159045

UNLESS OTHERWISE NOTED
DIMENSIONS ARE IN INCHES
TOLERANCES ARE:
ONE PLACE DECIMALS ± .1[2.54] THREE PLACE DECIMALS ± .005[.13]
TWO PLACE DECIMALS ± .01[.25] FOUR PLACE DECIMALS ± .0020[.051]
ANGLES ± 3°

TITLE:
.050 FLEX
CARD GUIDE
SYSTEM ASSEMBLY

DWG NO:
FCF-1XX-XX-XX-X-XX-XX-X
SHEET 1 OF 3

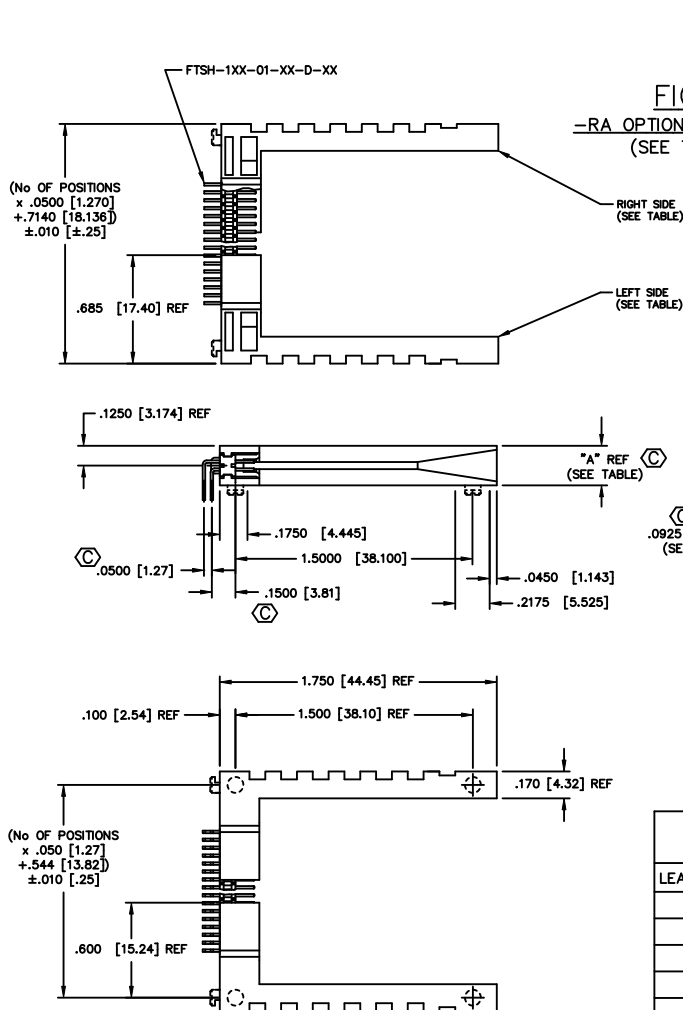


FIG 1
-RA OPTION (-02 SHOWN)
(SEE TABLE 2)

TABLE 2
(SEE NOTE-4 AND -5)

LEAD STYLE	TAIL OPTION	* SUB-ASSEMBLY
-02	-RA	FTSH-1XX-01-XX-D-FC
-03	-RA	FTSH-1XX-01-XX-D-FE
-02	-HP (25 POS.)	HPT-125-01-XX-D-FC
-03	-HP (25 POS.)	HPT-125-01-XX-D-FE
-02	-HP (34 POS.)	HPT-134-01-XX-D-FC
-03	-HP (34 POS.)	HPT-134-01-XX-D-FE
-02	THROUGH HOLE	FTSH-1XX-01-XX-D

* MUST PULL SUB-ASSEMBLY PRINT TO BUILD SUB-ASSEMBLY.

TABLE 1

LEAD STYLE	"A"	RIGHT (SL OPTION)	RIGHT (NO OPTION)	LEFT (SL OPTION)	LEFT (NO OPTION)
-02	.250	CGD-050-R-02-SL	CGD-050-R-02	CGD-050-L-02-SL	CGD-050-L-02
-03	.375	CGD-050-R-03-SL	CGD-050-R-03	CGD-050-L-03-SL	CGD-050-L-03

FCF-1XX-XX-XX-X-XX-XX-X

No. OF POSITIONS
-14 THRU -50 (PER ROW)

LEAD STYLE
-02: (SEE TABLE 2 FOR SUB-ASSEMBLY)
-03: ELEVATED (SEE SHEET 2)
(SEE TABLE 2 FOR SUB-ASSEMBLY)

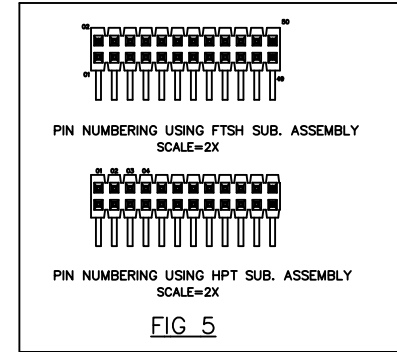
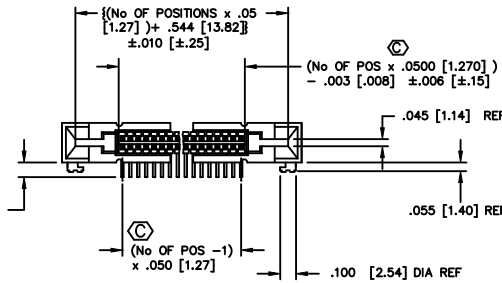
PLATING SPECIFICATION
-F: 3μ" FLASH SELECTIVE GOLD IN CONTACT AREA, MATTE TIN ON TAIL
FTSH SUB-ASSEMBLY ONLY
-L: 10μ" LIGHT SELECTIVE GOLD IN CONTACT AREA, MATTE TIN ON TAIL
-S: 30μ" SELECTIVE GOLD IN CONTACT AREA, MATTE TIN ON TAIL
-FM: 3μ" FLASH SELECTIVE GOLD IN CONTACT AREA, MATTE TIN ON TAILS
FTSH SUB-ASSEMBLY ONLY
-LM: 10μ" LIGHT SELECTIVE GOLD IN CONTACT AREA, MATTE TIN ON TAILS
-SM: 30μ" SELECTIVE GOLD IN CONTACT AREA, MATTE TIN ON TAILS

OPTION
-SL: SOLDER LOCKS

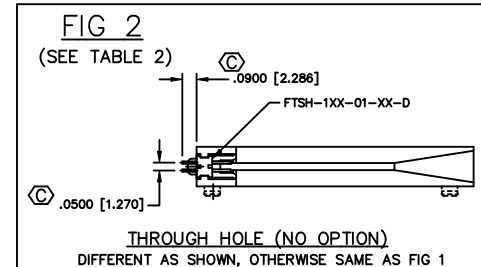
OPTIONS
-RA: RIGHT ANGLE (SEE FIG. 1)
-HP: HOT PLUGGABLE (SEE FIGS. 3 & 4, SHT. 3)
(AVAILABLE ON 25 & 34 POS. ASSEMBLYS ONLY)
LEAVE BLANK FOR THROUGH HOLE
(THROUGH HOLE AVAILABLE ON LEAD STYLE
-02 ONLY, SEE FIG 2)

CARD THICKNESS
-01: .031

ROW SPECIFICATION
-D: DOUBLE



- NOTE:
1. ALL PARTS TO BE LAYER PACKAGED WITH THE EXCEPTION OF -RA. -RA PARTS ARE TO BE PACKAGED IN TRAYS.
 2. FOR FINISHED INSPECTION ONLY, MEASURE FROM BOTTOM OF BODY TO TIP OF PIN.
 3. Ⓢ REPRESENTS A CRITICAL DIMENSION.
 4. ALL FTSH SUB-ASSEMBLYS MUST HAVE .120 POST.
 5. SEE TABLE 2 SHEET 1 OF SUB-ASSEMBLY PRINT FOR TAIL SHEAR DIMENSION.



PROPRIETARY NOTE
THIS DOCUMENT CONTAINS INFORMATION
CONFIDENTIAL AND PROPRIETARY TO
SAMTEC INC. AND SHALL NOT BE
REPRODUCED OR TRANSMITTED IN ANY
FORM OR BY ANY MEANS, ELECTRONIC
OR MECHANICAL, INCLUDING PHOTOCOPYING,
RECORDING, OR BY ANY INFORMATION
SYSTEMS WITHOUT THE EXPRESS
WRITTEN CONSENT OF SAMTEC INC.

EXSPROD/ASSEMBLY.050
FCF-ASM

samtec

520 PARK EAST BLVD. NEW ALBANY, INDIANA 47150
PHONE (812) 944-6733 P.O. BOX 1147
CODE 55322

MADE BY:
PURVIS 12-17-96

FCF-1XX-XX-XX-X-XX-XX-X
SHEET 1 OF 3