

DO NOT SCALE FROM THIS PRINT

UNLESS OTHERWISE NOTED TOLERANCES ARE:

ONE PLACE DECIMALS ± .1 [2.5] THREE PLACE DECIMALS ± .005 [.13] ANGLES ± 2°

TWO PLACE DECIMALS ± .01 [.25] FOUR PLACE DECIMALS ± .0020 [.051]

TITLE: ASSEMBLY, .025 [.64] SQ. POST HI-TEMP TERMINAL STRIP

DWG NO: HMTSW-XXX-XX-XXX-X-XXXX-XX-XX

SHEET 1 OF 2

TABLE 1
TERMINAL SPECIFICATIONS

TERMINAL SPEC	PIN #1	PIN #1 OAL	PIN #2	PIN #2 OAL	PIN #3	PIN #3 OAL
-05	T-1S6-21-XXX-2	.335 [8.51]	N/A	N/A	N/A	N/A
-06	T-1S6-18-XXX-2	.300 [7.62]	N/A	N/A	N/A	N/A
-07	T-1S6-07-XXX-2	.430 [10.92]	T-1S6-15-XXX-2	.630 [16.00]	T-1S6-10-XXX-2	.830 [21.08]
-08	T-1S6-08-XXX-2	.530 [13.46]	T-1S6-09-XXX-2	.730 [18.54]	T-1S6-11-XXX-2	.930 [23.62]
-09	T-1S6-09-XXX-2	.730 [18.54]	T-1S6-11-XXX-2	.930 [23.62]	T-1S6-20-XXX-2	1.130 [28.70]
-10	T-1S6-10-XXX-2	.830 [21.08]	T-1S6-12-XXX-2	1.030 [26.16]	T-1S6-13-XXX-2	1.230 [31.24]
-11	T-1S6-11-XXX-2	.930 [23.62]	T-1S6-20-XXX-2	1.130 [28.70]	T-1S6-19-XXX-2	1.330 [33.78]
-12	T-1S6-12-XXX-2	1.030 [26.16]	T-1S6-13-XXX-2	1.230 [31.24]	T-1S6-14-XXX-2	1.430 [36.23]
-13	T-1S6-13-XXX-2	1.230 [31.24]	T-1S6-14-XXX-2	1.430 [36.23]	N/A	N/A
-21	T-1S6-14-XXX-2	1.430 [36.23]	N/A	N/A	N/A	N/A
-22	T-1S6-15-XXX-2	.630 [16.00]	T-1S6-10-XXX-2	.830 [21.08]	T-1S6-12-XXX-2	1.030 [26.16]
-23	T-1S6-16-XXX-2	.445 [11.30]	N/A	N/A	N/A	N/A
-24	T-1S6-17-XXX-2	.480 [12.19]	N/A	N/A	N/A	N/A
-27	T-1S6-19-XXX-2	1.330 [33.78]	N/A	1.330 [33.78]	N/A	N/A
-28	T-1S6-20-XXX-2	1.130 [28.70]	T-1S6-19-XXX-2	N/A	N/A	N/A

NOTES:

1. TERMINAL PUSHOUT FORCE: 3 LBS. MIN.
2. HEIGHT VARIATION BETWEEN ANY TWO ROWS SHALL BE .005 [.13] MAX (R.A. TAIL N/A).
3. ASSEMBLE GOLD PLATE END AS SHOWN.
4. (C) REPRESENTS CRITICAL DIMENSION FOR STATISTICAL PROCESS CONTROL.
5. TOW & SWAY SPEC. OF 2' APPLIES TO ALL POSITIONS, POST & TAIL, IN ALL DIRECTIONS.
6. NOTE DELETED
7. MAXIMUM CUT FLASH: .010 [.25]
8. INSULATOR MATERIAL: NATURAL LCP, UL 94 V0

ASSEMBLY INSTRUCTIONS

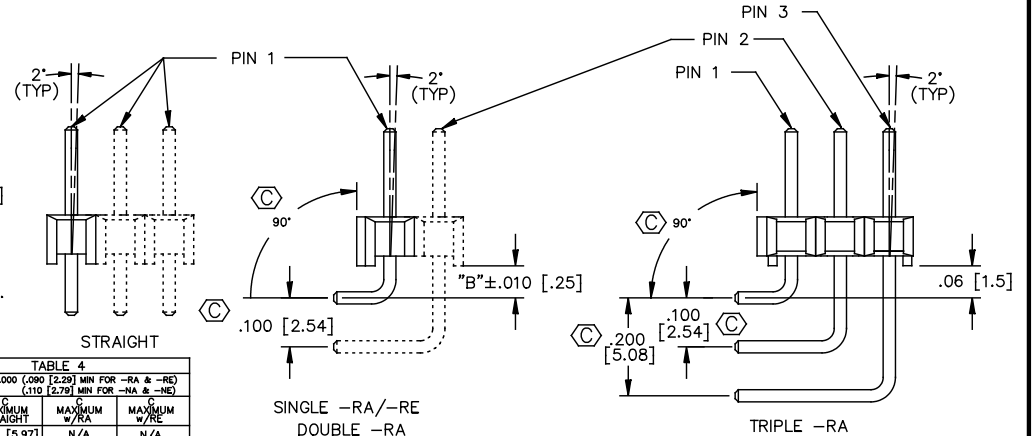
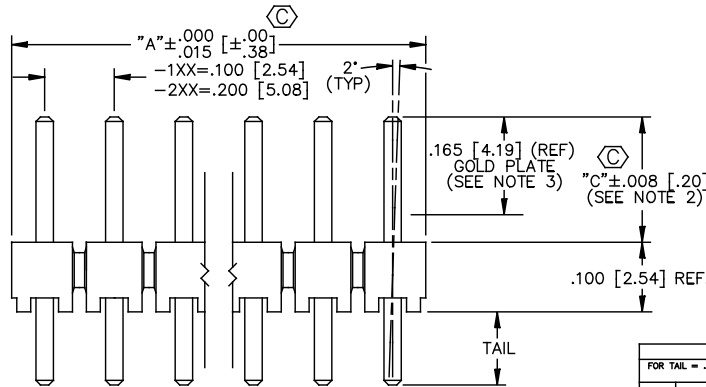


TABLE 4
FOR TAIL = .000 [.080 [2.29] MIN FOR -RA & -RE] (.110 [2.79] MIN FOR -NA & -NE)

LEAD STYLE	MAXIMUM STRAIGHT	MAXIMUM W/RA	MAXIMUM W/RE
-05	.235 [5.97]	N/A	N/A
-06	.200 [5.08]	N/A	N/A
-07	.330 [8.38]	.130 [3.30]	N/A
-08	.430 [10.92]	.230 [5.84]	.130 [3.30]
-09	.630 [16.00]	.430 [10.92]	.330 [8.38]
-10	.730 [18.54]	.530 [13.46]	.430 [10.92]
-11	.830 [21.08]	.630 [16.00]	.530 [13.46]
-12	.930 [23.62]	.730 [18.54]	.630 [16.00]
-13	1.130 [28.70]	.930 [23.62]	.830 [21.08]
-21	1.330 [33.78]	1.130 [28.70]	1.030 [26.16]
-22	.530 [13.46]	.330 [8.38]	.230 [5.84]
-23	.345 [8.76]	.145 [3.68]	N/A
-24	.380 [9.65]	.180 [4.57]	N/A
-27	1.230 [31.24]	1.030 [26.16]	.930 [23.62]
-28	1.030 [26.16]	.830 [21.08]	.730 [18.54]

BODY SPECIFICATION		TABLE 3	
ROW/OPTION	USE BODY	-XX	"B"
-S/-S-NA/-S-NE	HTSW-50-S-LCP	-RA	.060 [1.52]
-S-RA/-S-RE	HTSW-50-S-RA-LCP	-RE	.160 [4.06]
-D/-D-NA/-D-NE	HTSW-50-D-LCP		
-D-RA	HTSW-50-D-RA-LCP		
-T/-T-NA/-T-NE	HTSW-50-T-LCP		
-T-RA	HTSW-50-TRA-LCP		
-Q	HTSW-50-T-LCP		

HMTSW-XXX-XX-XXX-X-XXXX-XX-XX

TERMINAL SPACE SPEC. (SEE ASSEMBLY INSTR.)

- 1= .100 [2.54] (FILL EVERY POS.)
- 2= .200 [5.08] (FILL E/O POS. STARTING W/ 1st & ENDING W/ LAST POS. IN BODY)

BODY LENGTH SPEC. EXPRESSED IN # OF POS.

- 1: 01 THRU 50 (-S,-D,-T,-RA) 01 THRU 50 (-S,-RE,-S-RA,-D-RA) *A= NO. OF POS. x .100 [2.54]
- 2: 02 THRU 25 (-S,-D,-T,-RA) 02 THRU 25 (-S,-RE,-S-RA,-D-RA) *A= (NO OF POS. x .200 [5.08])-.100 [2.54]

TERMINAL SPECIFICATION SEE TABLE 1

OPTION #2

- POLARIZATION SPEC. XXX INDICATES POS. TO BE OMITTED (SEE FIG. 2)

OPTION #1

- BLANK= STRAIGHT
- RA= RIGHT ANGLE (SEE TABLE 3 & FIG. 3)
- RE= EXTENDED RIGHT ANGLE (SEE TABLE 3 & FIG. 3) (SINGLE ROW ONLY) (-07,-23,-24 N/A)
- NA= RA OPTION WITH STRAIGHT OPTION BODY
- NE= RE OPTION WITH STRAIGHT OPTION BODY
- LC= LOCKING CLIP (USE LTC-01 FOR SGL. ROW & LTC-02 FOR DBL. ROW)
- LL= LOCKING LEAD (SEE FIG. 1) (N/A WITH -RE OPTION OR SINGLE ROW 1 OR 2 POSITION)
- (TAILS FROM .090 [2.29] TO .400 [10.16] ONLY) (N/A IN SINGLE ROW, 1 & 2 POSITIONS)
- LA= -RA OPTION WITH -LL OPTION (SEE FIG. 2 & 3) (N/A WITH OR SINGLE ROW 1 OR 2 POSITION) (TAILS FROM .090 [2.29] TO .310 [7.87] ONLY) POST = .530 [13.46] MAX.

POST HEIGHT XXXX = "C" (SEE TABLE 4)

ROW SPECIFICATION (SEE TABLE #2)

- S: SINGLE
- D: DOUBLE
- T: TRIPLE
- Q: TRIPLE ROW(FILL OUTER TWO ROWS)

PLATING SPECIFICATIONS

- G: 10µ" GOLD IN CONTACT AREA, 3 µ" GOLD ON TAIL
- T: MATTE TIN CONTACT AND TAIL
- S: 30µ" SELECTIVE GOLD IN CONTACT AREA, MATTE TIN ON TAIL
- H: 30µ" GOLD IN CONTACT AREA, 3µ" GOLD ON TAIL
- L: 10µ" SELECTIVE GOLD IN CONTACT AREA, MATTE TIN ON TAIL
- F: 3µ" SELECTIVE GOLD IN CONTACT AREA, MATTE TIN ON TAIL
- E: 50µ" GOLD IN CONTACT AREA, 3µ" GOLD ON TAIL (ONLY AVAILABLE ON TERMINAL SPECIFICATIONS -07, -08, -09, -13, -14, NOT AVAILABLE ON -RA, -RE, -NA, -NE, -LA)
- TL: TIN/LEAD (90/10+/-5%) CONTACT AND TAIL (AVAILABLE ONLY ON LEAD STYLES -07, -08, & -09)
- TM: MATTE TIN CONTACT AND TAIL
- SM: 30µ" SELECTIVE GOLD IN CONTACT AREA, MATTE TIN ON TAIL
- LM: 10 µ" SELECTIVE GOLD IN CONTACT AREA, MATTE TIN ON TAIL
- FM: 3 µ" SELECTIVE GOLD IN CONTACT AREA, MATTE TIN ON TAIL
- STL: 30 µ" SELECTIVE GOLD IN CONTACT AREA, TIN LEAD (90/10+/-5%) TAIL

PROPRIETARY NOTE

THIS DOCUMENT CONTAINS CONFIDENTIAL AND PROPRIETARY INFORMATION AND ALL DESIGN, MANUFACTURING, REPRODUCTION, USE, PATENT RIGHTS AND SALES RIGHTS ARE EXPRESSLY RESERVED BY SAMTEC, INC. THIS DOCUMENT SHALL NOT BE DISCLOSED, IN WHOLE OR PART, TO ANY UNAUTHORIZED PERSON OR ENTITY NOR REPRODUCED, TRANSMITTED OR INCORPORATED IN ANY OTHER PRODUCT IN ANY MANNER WITHOUT THE EXPRESS WRITTEN CONSENT OF SAMTEC, INC.

EXISPROD ASSEMBLY 100 HMTSW-AM

samtec

520 PARK EAST BLVD. NEW ALBANY, INDIANA 47150
PHONE (812) 944-6733 P.O. BOX 1147
CODE 55322

MADE BY: JORDAN 3-25-87 HMTSW-XXX-XX-XXX-X-XXXX-XX-XX SHEET 1 OF 2