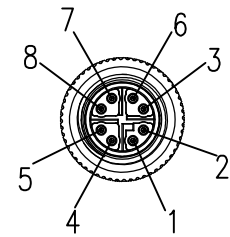
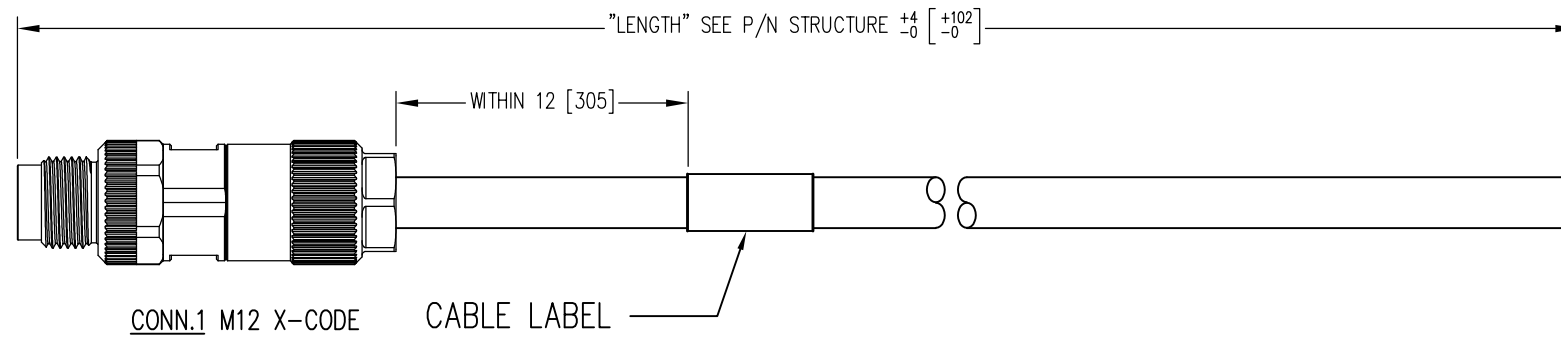


DATE	REV	ECN	APP'D. BY
2/25/21	A0	RELEASED	JME



PER EIA/TIA 568B



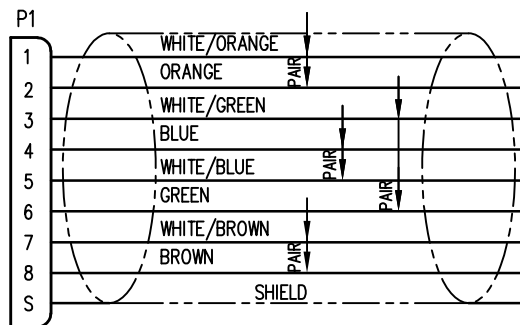
CONN.1 M12 X-CODE

CABLE LABEL

NOTES:

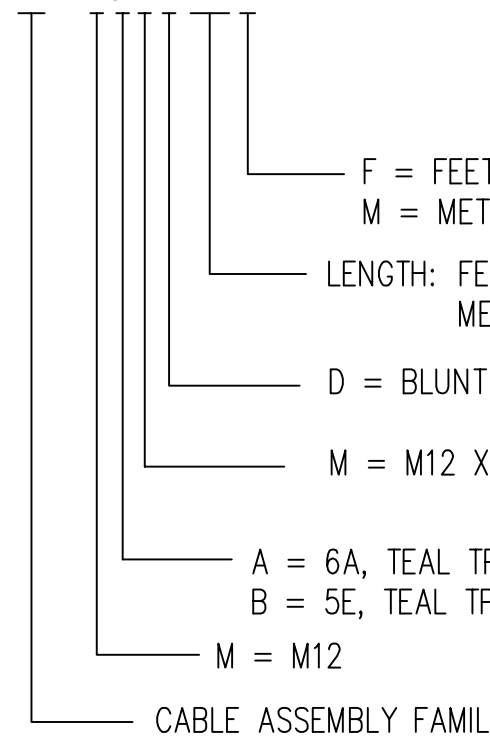
1. M12 CONNECTOR COMPONENTS:
HOUSING: THERMOPLASTIC UL94 V-0
CONTACTS: COPPER ALLOY
SHELL: COPPER ALLOYS AND ZINC ALLOY
SEALING: NBR
CONTACT PLATING: UNDERPLATE: 50u"~70u" NICKEL
CONTACT AREA: 10u" GOLD
2. ELECTRICAL TESTING:
100% TRANSMISSION TESTED FOR PERFORMANCE
3. PACKAGING:
ONE CABLE PER BAG

PIN ASSIGNMENT
568B STANDARD WIRING MAP



P/N STRUCTURE:

BM-MyMDxxxM



F = FEET
M = METERS

LENGTH: FEET = xxx, 100FT=100, 10FT=010, 1FT=001
METERS = xxx, 10M=100, 1M=010, .1M=001

D = BLUNT

M = M12 X-CODE MALE PLUG ASSEMBLED TYPE

A = 6A, TEAL TPE CABLE

B = 5E, TEAL TPE CABLE

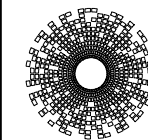
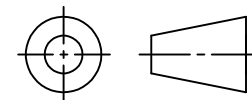
M = M12

CABLE ASSEMBLY FAMILY

Part Numbers Reference Table

LENGTH	Part Number
1 M	BM-MyMD001M
3 M	BM-MyMD003M
5 M	BM-MyMD005M
10 M	BM-MyMD010M

THIRD ANGLE PROJECTION



stewart
CONNECTOR
a bel group

1118 Susquehanna Trail South
Glen Rock, PA 17327-9199
(717) 235-7512

<http://www.stewartconnector.com>

DO NOT SCALE DRAWING
DRAWING IS SUBJECT TO
CHANGE WITHOUT NOTICE

TITLE: M12 X-CODE MALE TO BLUNT

DIMENSIONS: INCHES [METRIC]
UNLESS OTHERWISE SPECIFIED
TOLERANCES ARE ±.008 [0.20]
ANGLES ARE ± 1°

THIS DRAWING AND THE SUBJECT MATTER SHOWN THEREON ARE CONFIDENTIAL AND THE PROPRIETARY PROPERTY OF STEWART CONNECTOR AND SHALL NOT BE REPRODUCED, COPIED, OR USED IN ANY MANNER WITHOUT PRIOR WRITTEN CONSENT OF STEWART CONNECTOR. ONE OR MORE U.S. PATENTS MAY APPLY TO THIS PRODUCT. FOR DETAILS, PLEASE VISIT: [HTTP://BELFUSE.COM/STEWART/STEWART_PATENTS/](http://BELFUSE.COM/STEWART/STEWART_PATENTS/)

DRN BY:	GWL	DATE	2-23-21
APPD BY:	JME	DATE	2-25-21
DWG NO.	CT999252	REV.	A0

SHEET NO. 1 OF 1

