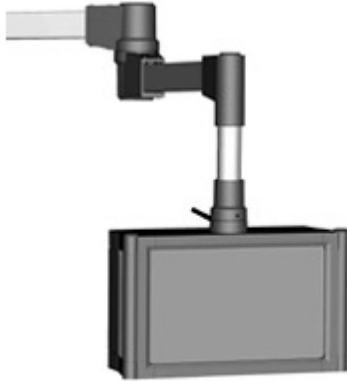


## Tara Plus Suspension System *TPSS Series*

NEMA 12, 13



### Application

- Taraplus enclosure suspension systems are designed for light and medium loads.
- The strength of tube and cast fittings provide a highly flexible robust system.

### Standards

- Complies with
  - IEC 60529 IP54

### Construction

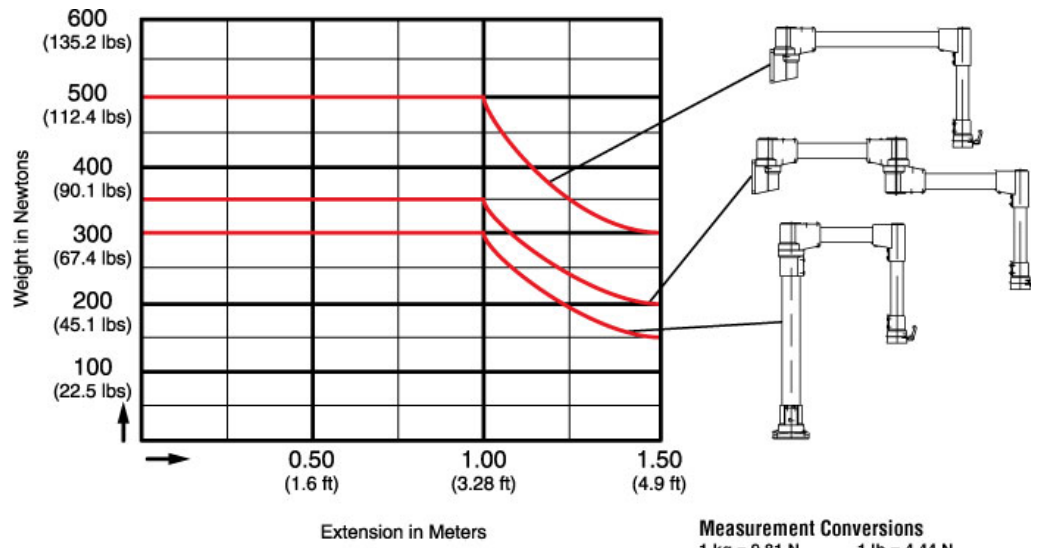
- Enclosure coupling and elbow coupling fittings are die-cast from G AL SI 12 aluminum.
- Suspension tubing is steel.

### Finish

- Fittings are finished in RAL 7040 window gray.
- Suspension tubing is RAL 7035 light gray.

### Accessories

- Suspension Tube
- Tilt Coupling
- Tilt Elbow Coupling
- Fixed Elbow 70
- Base 48
- Rotating Base 70
- Wall Joint
- Intermediate Joint
- Tara Plus Coupling
- Elbow Coupling
- Fixed Elbow 48
- Rotating Elbow
- Base 70
- Socket Joint
- Vertical Wall Joint



**Measurement Conversions**  
 1 kg = 9.81 N      1 lb = 4.44 N  
 e.g. 500 Newtons = 51 kg = 112.4 lbs  
 300 Newtons = 30.6 kg = 67.4 lbs  
 100 Newtons = 10.2 kg = 22.5 lbs  
 1 foot = 0.305 m

*Data subject to change without notice*