

Low Voltage, Filament - 15 VA to 640 VA 167 Series

Enclosed, Chassis Mount - 115 V Primary

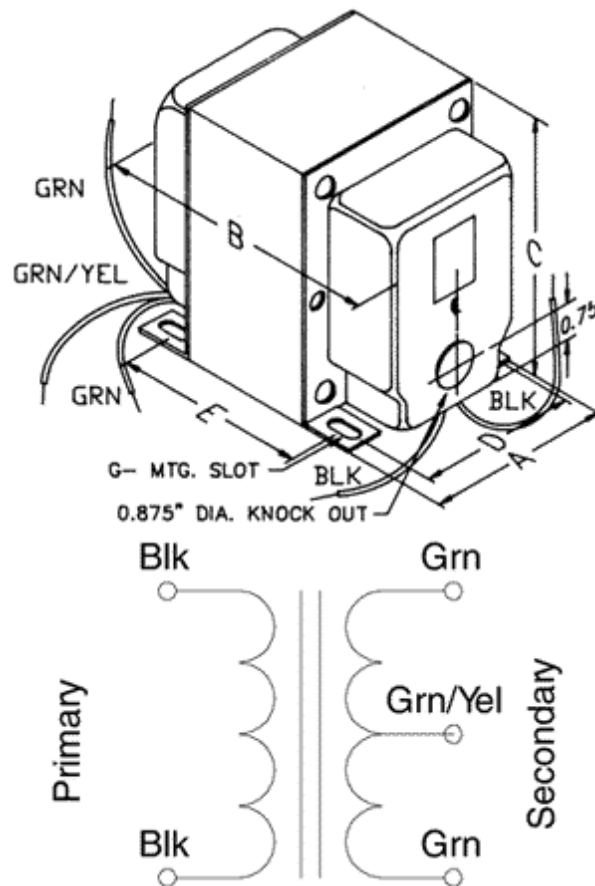
Features



- Primary 115 VAC, 60 Hz.
- All secondaries center tapped, VAC (RMS)
- Enclosed, 4 hole chassis mount.
- Minimum 6" long leads.
- Dual bobbin design - no electrostatic shield required.
- Class B insulation (130 degrees C).
- Hi-Pot test of 2,000V RMS.
- UL listed (# E50394) & CSA certified (209651).



Ask About
Custom
Transformers
& Chokes



Part No.	VA	Secondary (R.M.S.)		Dimensions					Mounting Slot		
		VAC	Amps	A	B	C	D	E	G		
167M5	15	5 C.T.	3	1.88	2.19	2.50	1.50	1.31	0.19	x	0.31
167Q5	30	5 C.T.	6	1.88	2.44	2.50	1.50	1.56	0.19	x	0.31
167R5	40	5 C.T.	8	2.19	2.50	2.63	1.75	1.44	0.19	x	0.25
167U5	75	5 C.T.	15	2.50	2.75	3.06	2.00	1.69	0.20	x	0.38
167X5	150	5 C.T.	30	3.13	3.50	3.81	2.50	2.19	0.20	x	0.38
167N6	25.2	6.3 C.T.	4	1.88	2.44	2.50	1.50	1.56	0.19	x	0.31
167Q6	37.8	6.3 C.T.	6	2.19	2.38	2.63	1.75	1.31	0.19	x	0.25

Part No.	Secondary (R.M.S.)			Dimensions					Mounting Slot		
	VA	VAC	Amps	A	B	C	D	E	G		
167R6	50.4	6.3 C.T.	8	2.19	2.63	2.63	1.75	1.56	0.19	x	0.25
167S6	63	6.3 C.T.	10	2.50	2.75	3.06	2.00	1.69	0.20	x	0.38
167T6	75.6	6.3 C.T.	12	2.50	2.75	3.06	2.00	1.69	0.20	x	0.38
167U6	100.8	6.3 C.T.	16	2.50	3.25	3.06	2.00	2.19	0.20	x	0.38
167U7	112.5	7.5 C.T.	15	2.50	3.25	3.06	2.00	2.19	0.20	x	0.38
167V7	157.5	7.5 C.T.	21	3.13	3.50	3.81	2.50	2.19	0.20	x	0.38
167R10	80	10 C.T.	8	2.50	3.00	3.06	2.00	1.94	0.20	x	0.38
167S10	100	10 C.T.	10	2.50	3.25	3.06	2.00	2.19	0.20	x	0.38
167L12	31.5	12.6 C.T.	2.5	1.88	2.44	2.50	1.50	1.56	0.19	x	0.31
167N12	50.4	12.6 C.T.	4	2.19	2.63	2.63	1.75	1.56	0.19	x	0.25
167Q12	75.6	12.6 C.T.	6	2.50	2.75	3.06	2.00	1.69	0.20	x	0.38
167R12	100.8	12.6 C.T.	8	2.50	3.25	3.06	2.00	2.19	0.20	x	0.38
167S12	126	12.6 C.T.	10	2.50	3.75	3.06	2.00	2.69	0.20	x	0.38
167V12	252	12.6 C.T.	20	3.75	4.00	4.56	3.00	2.81	0.20	x	0.38
167M16	48	16 C.T.	3	2.19	2.63	2.63	1.75	1.56	0.19	x	0.25
167P16	80	16 C.T.	5	2.50	3.00	3.06	2.00	1.94	0.20	x	0.38
167M18	54	18 C.T.	3	2.50	2.75	3.06	2.00	1.69	0.20	x	0.38
167P18	90	18 C.T.	5	2.50	3.00	3.06	2.00	1.94	0.20	x	0.38
167M20	60	20 C.T.	3	2.50	2.75	3.06	2.00	1.69	0.20	x	0.38
167P20	100	20 C.T.	5	2.50	3.25	3.06	2.00	2.19	0.20	x	0.38
167U20	320	20 C.T.	16	3.75	4.50	4.56	3.00	3.31	0.20	x	0.38
167T22	264	22 C.T.	12	3.75	4.00	4.56	3.00	2.81	0.20	x	0.38
167V22	440	22 C.T.	20	3.75	5.00	4.56	3.00	3.81	0.20	x	0.38
167L24	48	24 C.T.	2	2.19	2.63	2.63	1.75	1.56	0.19	x	0.25
167J25	25	25 C.T.	1	1.88	2.44	2.50	1.50	1.56	0.19	x	0.31
167K25	37.5	25 C.T.	1.5	2.19	2.38	2.63	1.75	1.31	0.19	x	0.25
167M25	75	25 C.T.	3	2.50	2.75	3.06	2.00	1.69	0.20	x	0.38
167N25	100	25 C.T.	4	2.50	3.25	3.06	2.00	2.19	0.20	x	0.38
167P25	125	25 C.T.	5	2.50	3.75	3.06	2.00	2.69	0.20	x	0.38
167S25	250	25 C.T.	10	3.75	4.00	4.56	3.00	2.81	0.20	x	0.38
167J28	28	28 C.T.	1	1.88	2.44	2.50	1.50	1.56	0.19	x	0.31
167L28	56	28 C.T.	2	2.50	2.75	3.06	2.00	1.69	0.20	x	0.38
167M28	84	28 C.T.	3	2.50	3.00	3.06	2.00	1.94	0.20	x	0.38
167K30	45	30 C.T.	1.5	2.19	2.50	2.63	1.75	1.44	0.19	x	0.25
167S30	300	30 C.T.	10	3.75	4.00	4.56	3.00	2.81	0.20	x	0.38
167J33	33	33 C.T.	1	1.88	2.44	2.50	1.50	1.56	0.19	x	0.31
167J36	36	36 C.T.	1	2.19	2.38	2.63	1.75	1.31	0.19	x	0.25
167L36	72	36 C.T.	2	2.50	2.75	3.06	2.00	1.69	0.20	x	0.38
167M36	108	36 C.T.	3	2.50	3.25	3.06	2.00	2.19	0.20	x	0.38
167P36	180	36 C.T.	5	3.13	3.75	3.81	2.50	2.44	0.20	x	0.38
167R36	288	36 C.T.	8	3.75	4.00	4.56	3.00	2.81	0.20	x	0.38
167T36	432	36 C.T.	12	3.75	5.00	4.56	3.00	3.81	0.20	x	0.38
167L44	88	44 C.T.	2	2.50	3.00	3.06	2.00	1.94	0.20	x	0.38
167L50	100	50 C.T.	2	2.50	3.25	3.06	2.00	2.19	0.20	x	0.38
167P50	250	50 C.T.	5	3.75	4.00	4.56	3.00	2.81	0.20	x	0.38
167G55	27.5	55 C.T.	0.5	1.88	2.44	2.50	1.50	1.56	0.19	x	0.31
167J55	55	55 C.T.	1	2.50	2.75	3.06	2.00	1.69	0.20	x	0.38
167L55	110	55 C.T.	2	2.50	3.25	3.06	2.00	2.19	0.20	x	0.38
167J60	60	60 C.T.	1	2.50	2.75	3.06	2.00	1.69	0.20	x	0.38
167L60	120	60 C.T.	2	2.50	3.75	3.06	2.00	2.69	0.20	x	0.38
167M60	180	60 C.T.	3	3.13	3.75	3.81	2.50	2.44	0.20	x	0.38
167S64	640	64 C.T.	10	3.75	5.50	4.56	3.00	4.31	0.20	x	0.38
167L70	140	70 C.T.	2	2.50	3.75	3.06	2.00	2.69	0.20	x	0.38
167N70	280	70 C.T.	4	3.75	4.00	4.56	3.00	2.81	0.20	x	0.38
167G80	40	80 C.T.	0.5	2.19	2.50	2.63	1.75	1.44	0.19	x	0.25

Part No.	Secondary (R.M.S.)			Dimensions					Mounting Slot		
	VA	VAC	Amps	A	B	C	D	E	G		
167J80	80	80 C.T.	1	2.50	3.00	3.06	2.00	1.94	0.20	x	0.38
167L80	160	80 C.T.	2	3.13	3.50	3.81	2.50	2.19	0.20	x	0.38
167N80	320	80 C.T.	4	3.75	4.50	4.56	3.00	3.31	0.20	x	0.38
167G100	50	100 C.T.	0.5	2.19	2.63	2.63	1.75	1.56	0.19	x	0.25
167J100	100	100 C.T.	1	2.50	3.25	3.06	2.00	2.19	0.20	x	0.38
167P100	500	100 C.T.	5	3.75	5.50	4.56	3.00	4.31	0.20	x	0.38
167G120	60	120 C.T.	0.5	2.50	2.75	3.06	2.00	1.69	0.20	x	0.38
167H200	174	200 C.T.	0.87	3.13	3.75	3.81	2.50	2.44	0.20	x	0.38

Data subject to change without notice