

Type BLH, DC Link Capacitors for Harsh Environments

85 °C / 85% RH , 1500h @ Vr, AEC-Q200 Qualified



Type BLH DC Link capacitors use the most advanced construction and technology to meet the challenges of harsh environments. Tested for 1,500-hour at 85 °C / 85% relative humidity with rated voltage applied (50% greater than competitive THB test life). The series is qualified to automotive-grade electrical and mechanical testing per standard AEC-Q200.

Highlights

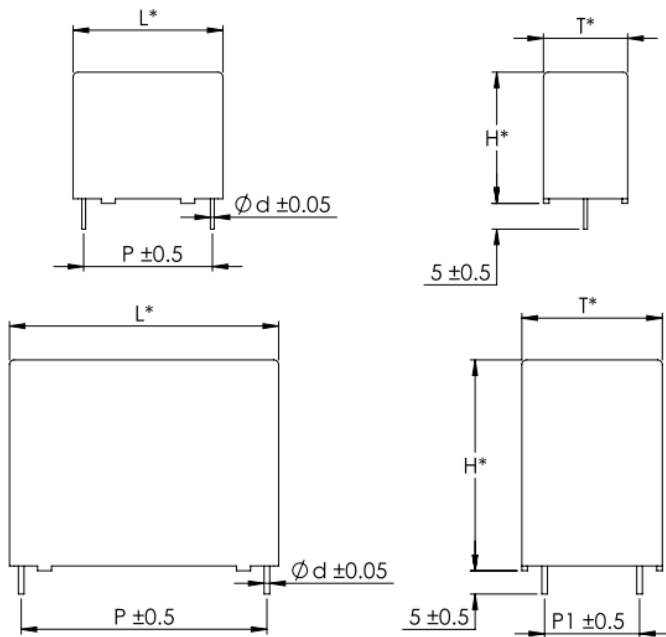
- High capacitance
- High ripple current
- Self-healing and low loss
- THB 85 °C / 85% RH 1500 h at rated voltage

Specifications

| | |
|--|---|
| Capacitance Range | 1 to 170 µF |
| Capacitance Tolerance | ±10% standard , ±5% optional |
| Rated Voltage | 450 to 1200 Vdc |
| Operating Temperature Range | -40 °C to 105 °C (>85 °C derate voltage 1.35% per °C) |
| Maximum rms Current | see data tables |
| Maximum rms Voltage | 230 Vac |
| Test Voltage between Terminals @ 25 °C | 150% rated DC voltage for 10 s |
| Test Voltage between Terminals and Case @ 25°C | 3 kVac @ 50/60 Hz for 10 s |
| Insulation Resistance | ≥30,000 MΩxµF @ 100 Vdc 25 °C after 1 minute |
| Life Expectancy | 100,000 h @ 70°C hot spot, rated voltage |
| THB Rating | 85 °C / 85% RH - rated voltage - 1500 h |
| Reference Standards | IEC 61071, AEC- Q200 qualified (as noted) |

Regulatory Information

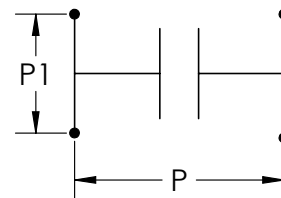
Dimensions



* ±0.8 for L ≤ 42.5mm
±1.0 for L = 57.5mm

| Construction Details | |
|----------------------|-------------------|
| Case Material | Plastic UL94V-0 |
| Resin Material | Dry Resin UL94V-0 |
| Terminal Material | Tin Plated Copper |

UL Recognized E128034 construction only - unprotected



Type BLH, DC Link Capacitors for Harsh Environments

85 °C / 85% RH , 1500h @ Vr, AEC-Q200 Qualified

Part Numbering System

| BLH Series | 107 Capacitance | K Tolerance | 701 Voltage | C13 Case | 4 Leads |
|------------|---|---------------------------------------|--|-----------|----------------------------|
| BLH | EIA Cap Code 305 = 3 μF 226 = 22 μF 107 = 100 μF | K = ±10% Standard J = ±5% Optional | 451 = 450 Vdc 551 = 550 Vdc 601 = 600 Vdc 701 = 700 Vdc 801 = 800 Vdc 901 = 900 Vdc 102 = 1000 Vdc 112 = 1100 Vdc 122 = 1200 Vdc | Case Code | 2 = 2 Leads 4 = 4 Leads |

Ratings

| Part Number | Cap C (μF) | Typ ESR 10 kHz (mΩ) | Thermal Res (°C/W) | I _{rms} 10 kHz 70 °C (A) | Typ ESL (nH) | dv/dt (V/μs) | Peak Current (A) | Dimensions | | | | | | AEC Q200 |
|----------------|------------|---------------------|--------------------|-----------------------------------|--------------|--------------|------------------|------------|--------|--------|--------|---------|--------|----------|
| | | | | | | | | L (mm) | H (mm) | T (mm) | P (mm) | P1 (mm) | d (mm) | |
| 450 Vdc | | | | | | | | | | | | | | |
| BLH105K451A012 | 1 | 45 | 51.7 | 2.5 | 25 | 60 | 60 | 32 | 18 | 9 | 27.5 | \ | 0.8 | Yes |
| BLH205K451A012 | 2 | 30 | 50.5 | 3 | 25 | 60 | 120 | 32 | 18 | 9 | 27.5 | \ | 0.8 | Yes |
| BLH305K451A022 | 3 | 20 | 49.3 | 4 | 25 | 60 | 180 | 32 | 20 | 11 | 27.5 | \ | 0.8 | Yes |
| BLH405K451A022 | 4 | 18 | 48.4 | 4 | 25 | 60 | 240 | 32 | 20 | 11 | 27.5 | \ | 0.8 | Yes |
| BLH505K451A022 | 5 | 12 | 47.1 | 5 | 25 | 60 | 300 | 32 | 20 | 11 | 27.5 | \ | 0.8 | Yes |
| BLH505K451A032 | 5 | 11 | 46.5 | 5.5 | 25 | 60 | 300 | 32 | 22 | 13 | 27.5 | \ | 0.8 | Yes |
| BLH106K451A052 | 10 | 8.5 | 23.7 | 7.5 | 25 | 60 | 600 | 32 | 28 | 14 | 27.5 | \ | 0.8 | Yes |
| BLH106K451A062 | 10 | 8 | 23.7 | 9 | 25 | 60 | 600 | 32 | 28 | 18 | 27.5 | \ | 0.8 | Yes |
| BLH126K451A072 | 12 | 7 | 20.5 | 10 | 25 | 60 | 720 | 32 | 33 | 18 | 27.5 | \ | 0.8 | Yes |
| BLH156K451A082 | 15 | 6 | 14.5 | 11.5 | 25 | 60 | 900 | 32 | 37 | 22 | 27.5 | \ | 0.8 | Yes |
| BLH156K451B012 | 15 | 8.5 | 15.5 | 9.5 | 25 | 30 | 450 | 42.5 | 18 | 24 | 37.5 | \ | 1 | Yes |
| BLH186K451A082 | 18 | 6 | 13.8 | 10 | 28 | 60 | 1080 | 32 | 37 | 22 | 27.5 | \ | 0.8 | Yes |
| BLH206K451A082 | 20 | 5 | 12.8 | 11 | 28 | 60 | 1200 | 32 | 37 | 22 | 27.5 | \ | 0.8 | Yes |
| BLH226K451A082 | 22 | 5 | 12.8 | 12.5 | 28 | 60 | 1320 | 32 | 37 | 22 | 27.5 | \ | 0.8 | Yes |
| BLH256K451B054 | 25 | 5.5 | 12.3 | 12.5 | 30 | 35 | 875 | 42.5 | 37 | 22 | 37.5 | 10.2 | 1.2 | Yes |
| BLH306K451B084 | 30 | 6 | 11.6 | 12 | 30 | 35 | 1050 | 42.5 | 40 | 20 | 37.5 | 10.2 | 1.2 | Yes |
| BLH406K451B064 | 40 | 5.5 | 9.3 | 14 | 30 | 35 | 1400 | 42.5 | 37 | 28 | 37.5 | 10.2 | 1.2 | Yes |
| BLH406K451B094 | 40 | 5.2 | 9.0 | 15 | 30 | 35 | 1400 | 42.5 | 44 | 24 | 37.5 | 10.2 | 1.2 | Yes |
| BLH406K451C014 | 40 | 8 | 9.5 | 12 | 30 | 35 | 1400 | 57.5 | 22 | 43 | 52.5 | 20.3 | 1.2 | Yes |
| BLH506K451B104 | 50 | 4 | 11.1 | 15 | 30 | 35 | 1750 | 42.5 | 45 | 30 | 37.5 | 20.3 | 1.2 | Yes |
| BLH506K451C014 | 50 | 6.5 | 9.5 | 14 | 30 | 35 | 1750 | 57.5 | 22 | 43 | 52.5 | 20.3 | 1.2 | Yes |
| BLH556K451C064 | 55 | 5 | 9.8 | 15.5 | 30 | 35 | 1925 | 57.5 | 45 | 30 | 52.5 | 20.3 | 1.2 | Yes |

*AEC Q200 may be available

Type BLH, DC Link Capacitors for Harsh Environments



85 °C / 85% RH , 1500h @ Vr, AEC-Q200 Qualified

| Part Number | Cap C (µF) | Typ ESR 10 kHz (mΩ) | Thermal Res (°C/W) | Irms 10 kHz 70 °C (A) | Typ ESL (nH) | dv/dt (V/µs) | Peak Current (A) | Dimensions | | | | | | AEC Q200 |
|----------------|------------|---------------------|--------------------|-----------------------|--------------|--------------|------------------|------------|--------|--------|--------|---------|--------|----------|
| | | | | | | | | L (mm) | H (mm) | T (mm) | P (mm) | P1 (mm) | d (mm) | |
| 450 Vdc | | | | | | | | | | | | | | |
| BLH606K451C064 | 60 | 4.5 | 9.2 | 16.5 | 30 | 35 | 2100 | 57.5 | 45 | 30 | 52.5 | 20.3 | 1.2 | Yes |
| BLH606K451B104 | 60 | 4 | 8.6 | 16.5 | 30 | 35 | 2100 | 42.5 | 45 | 30 | 37.5 | 20.3 | 1.2 | Yes |
| BLH806K451C064 | 80 | 4 | 7.4 | 16 | 35 | 20 | 1600 | 57.5 | 45 | 30 | 52.5 | 20.3 | 1.2 | Yes |
| BLH107K451C084 | 100 | 3.8 | 6.2 | 18 | 35 | 20 | 2000 | 57.5 | 50 | 35 | 52.5 | 20.3 | 1.2 | Yes |
| BLH137K451C124 | 130 | 3.5 | 5.5 | 22 | 35 | 20 | 2600 | 57.5 | 60 | 35 | 52.5 | 20.3 | 1.2 | * |
| BLH147K451C134 | 140 | 3.4 | 5.4 | 24 | 35 | 20 | 2800 | 57.5 | 65 | 35 | 52.5 | 20.3 | 1.2 | * |
| BLH157K451C154 | 150 | 3.2 | 5.2 | 26 | 35 | 20 | 3000 | 57.5 | 70 | 35 | 52.5 | 20.3 | 1.2 | * |
| BLH167K451C164 | 160 | 3.1 | 5.0 | 28 | 35 | 20 | 3200 | 57.5 | 80 | 35 | 52.5 | 20.3 | 1.2 | * |
| BLH177K451C164 | 170 | 3 | 4.8 | 30 | 35 | 20 | 3400 | 57.5 | 80 | 35 | 52.5 | 20.3 | 1.2 | * |
| 550 Vdc | | | | | | | | | | | | | | |
| BLH305K551A022 | 3 | 28 | 22.3 | 4 | 25 | 60 | 180 | 32 | 20 | 11 | 27.5 | \ | 0.8 | Yes |
| BLH505K551A032 | 5 | 14 | 16.8 | 6 | 25 | 60 | 300 | 32 | 22 | 13 | 27.5 | \ | 0.8 | Yes |
| BLH805K551A052 | 8 | 12.5 | 12.6 | 8.5 | 25 | 60 | 480 | 32 | 28 | 14 | 27.5 | \ | 0.8 | Yes |
| BLH106K551A072 | 10 | 8 | 12.5 | 10 | 25 | 60 | 600 | 32 | 33 | 18 | 27.5 | \ | 0.8 | Yes |
| BLH156K551A082 | 15 | 6.5 | 9.1 | 12 | 28 | 60 | 900 | 32 | 37 | 22 | 27.5 | \ | 0.8 | Yes |
| BLH156K551A084 | 15 | 5.5 | 8.1 | 13 | 28 | 60 | 900 | 32 | 37 | 22 | 27.5 | 10.2 | 1.2 | Yes |
| BLH156K551B012 | 15 | 6.5 | 8.3 | 10.5 | 28 | 60 | 900 | 42.5 | 18 | 24 | 37.5 | \ | 1 | Yes |
| BLH206K551B084 | 20 | 6.5 | 9.8 | 12.5 | 30 | 35 | 700 | 42.5 | 40 | 20 | 37.5 | 10.2 | 1.2 | Yes |
| BLH226K551B084 | 22 | 6.5 | 8.4 | 13.5 | 30 | 35 | 770 | 42.5 | 40 | 20 | 37.5 | 10.2 | 1.2 | Yes |
| BLH256K551B084 | 25 | 6.5 | 7.3 | 14.5 | 30 | 35 | 875 | 42.5 | 40 | 20 | 37.5 | 10.2 | 1.2 | Yes |
| BLH306K551B094 | 30 | 6 | 6.5 | 16 | 30 | 35 | 1050 | 42.5 | 44 | 24 | 37.5 | 10.2 | 1.2 | Yes |
| BLH356K551B104 | 35 | 6 | 5.1 | 18 | 30 | 35 | 1225 | 42.5 | 45 | 30 | 37.5 | 20.3 | 1.2 | Yes |
| BLH406K551B104 | 40 | 5.5 | 5.1 | 18 | 30 | 35 | 1400 | 42.5 | 45 | 30 | 37.5 | 20.3 | 1.2 | Yes |
| BLH406K551C014 | 40 | 5.8 | 5.2 | 16 | 30 | 35 | 1400 | 57.5 | 22 | 43 | 52.5 | 20.3 | 1.2 | Yes |
| BLH506K551B114 | 50 | 5 | 5.0 | 20 | 30 | 35 | 1750 | 42.5 | 50 | 35 | 37.5 | 20.3 | 1.2 | Yes |
| BLH606K551C064 | 60 | 4.8 | 6.2 | 18 | 35 | 20 | 1200 | 57.5 | 45 | 30 | 37.5 | 20.3 | 1.2 | Yes |
| BLH756K551C084 | 75 | 5 | 5.0 | 20 | 35 | 20 | 1500 | 57.5 | 50 | 35 | 52.5 | 20.3 | 1.2 | Yes |
| BLH107K551C114 | 100 | 4.5 | 3.9 | 24 | 35 | 20 | 2000 | 57.5 | 55 | 45 | 52.5 | 20.3 | 1.2 | Yes |
| BLH117K551C114 | 110 | 4 | 3.7 | 26 | 35 | 20 | 2200 | 57.5 | 55 | 45 | 52.5 | 20.3 | 1.2 | Yes |
| BLH137K551C124 | 130 | 3.4 | 5.4 | 23 | 35 | 20 | 2600 | 57.5 | 60 | 35 | 52.5 | 20.3 | 1.2 | * |
| BLH147K551C134 | 140 | 3.3 | 5.3 | 25 | 35 | 20 | 2800 | 57.5 | 65 | 35 | 52.5 | 20.3 | 1.2 | * |
| BLH157K551C154 | 150 | 3.1 | 5.0 | 27 | 35 | 20 | 3000 | 57.5 | 70 | 35 | 52.5 | 20.3 | 1.2 | * |
| BLH167K551C164 | 160 | 3 | 4.8 | 29 | 35 | 20 | 3200 | 57.5 | 80 | 35 | 52.5 | 20.3 | 1.2 | * |
| BLH177K551C164 | 170 | 2.8 | 4.7 | 32 | 35 | 20 | 3400 | 57.5 | 80 | 35 | 52.5 | 20.3 | 1.2 | * |
| 600 Vdc | | | | | | | | | | | | | | |
| BLH305K601A022 | 3 | 28 | 22.3 | 4 | 25 | 60 | 180 | 32 | 20 | 11 | 27.5 | \ | 0.8 | Yes |
| BLH405K601A022 | 4 | 26 | 14.3 | 5 | 25 | 60 | 240 | 32 | 20 | 11 | 27.5 | \ | 0.8 | Yes |
| BLH505K601A052 | 5 | 14.5 | 26.5 | 6 | 25 | 60 | 300 | 32 | 28 | 14 | 27.5 | \ | 0.8 | Yes |
| BLH805K601A052 | 8 | 12 | 17.8 | 7.5 | 25 | 60 | 480 | 32 | 28 | 14 | 27.5 | \ | 0.8 | Yes |
| BLH106K601A072 | 10 | 7.5 | 19.8 | 8.5 | 25 | 60 | 600 | 32 | 33 | 18 | 27.5 | \ | 0.8 | Yes |

*AEC Q200 may be available

Type BLH, DC Link Capacitors for Harsh Environments

85 °C / 85% RH , 1500h @ Vr, AEC-Q200 Qualified

| Part Number | Cap C (µF) | Typ ESR 10 kHz (mΩ) | Thermal Res (°C/W) | I rms 10 kHz 70 °C (A) | Typ ESL (nH) | dv/dt (V/µs) | Peak Current (A) | Dimensions | | | | | | AEC Q200 |
|----------------|------------|---------------------|--------------------|------------------------|--------------|--------------|------------------|------------|--------|--------|--------|---------|--------|----------|
| | | | | | | | | L (mm) | H (mm) | T (mm) | P (mm) | P1 (mm) | d (mm) | |
| 600 Vdc | | | | | | | | | | | | | | |
| BLH126K601A072 | 12 | 7.5 | 15.8 | 9.5 | 25 | 60 | 720 | 32 | 33 | 18 | 27.5 | \ | 0.8 | Yes |
| BLH126K601B012 | 12 | 9.5 | 16.8 | 8 | 25 | 35 | 420 | 42.5 | 18 | 24 | 37.5 | \ | 1 | Yes |
| BLH156K601A082 | 15 | 7.5 | 12.1 | 10.5 | 28 | 60 | 900 | 32 | 37 | 22 | 27.5 | \ | 0.8 | Yes |
| BLH156K601B012 | 15 | 6 | 16.2 | 12 | 28 | 35 | 525 | 42.5 | 18 | 24 | 37.5 | \ | 1 | Yes |
| BLH206K601B084 | 20 | 6 | 13.8 | 11 | 30 | 35 | 700 | 42.5 | 40 | 20 | 37.5 | 10.2 | 1.2 | Yes |
| BLH306K601B064 | 30 | 5.5 | 10.8 | 13 | 30 | 35 | 1050 | 42.5 | 37 | 28 | 37.5 | 10.2 | 1.2 | Yes |
| BLH356K601B094 | 35 | 5 | 8.5 | 16.5 | 30 | 35 | 1225 | 42.5 | 44 | 24 | 37.5 | 10.2 | 1.2 | Yes |
| BLH356K601C014 | 35 | 5.5 | 10.7 | 13.5 | 30 | 20 | 700 | 57.5 | 22 | 43 | 52.5 | 20.3 | 1.2 | Yes |
| BLH406K601B104 | 40 | 4 | 7.7 | 18 | 30 | 35 | 1400 | 42.5 | 45 | 30 | 37.5 | 20.3 | 1.2 | Yes |
| BLH506K601C084 | 50 | 6.5 | 7.8 | 14 | 35 | 20 | 1000 | 57.5 | 50 | 35 | 52.5 | 20.3 | 1.2 | Yes |
| BLH606K601C084 | 60 | 5 | 7.8 | 16 | 35 | 20 | 1200 | 57.5 | 50 | 35 | 52.5 | 20.3 | 1.2 | Yes |
| BLH706K601C084 | 70 | 5 | 6.2 | 18 | 35 | 20 | 1400 | 57.5 | 50 | 35 | 52.5 | 20.3 | 1.2 | Yes |
| BLH806K601C114 | 80 | 4 | 6.3 | 20 | 35 | 20 | 1600 | 57.5 | 55 | 45 | 52.5 | 20.3 | 1.2 | Yes |
| BLH906K601C114 | 90 | 4 | 4.3 | 24 | 35 | 20 | 1800 | 57.5 | 55 | 45 | 52.5 | 20.3 | 1.2 | Yes |
| BLH107K601C094 | 100 | 4 | 3.7 | 26 | 35 | 20 | 2000 | 57.5 | 53 | 50 | 52.5 | 20.3 | 1.2 | Yes |
| BLH117K601C094 | 110 | 3.5 | 3.6 | 28 | 35 | 20 | 2200 | 57.5 | 53 | 50 | 52.5 | 20.3 | 1.2 | Yes |
| BLH127K601C124 | 120 | 3.4 | 3.5 | 30 | 35 | 20 | 2400 | 57.5 | 60 | 35 | 52.5 | 20.3 | 1.2 | * |
| BLH137K601C134 | 130 | 3.3 | 3.4 | 32 | 35 | 20 | 2600 | 57.5 | 65 | 35 | 52.5 | 20.3 | 1.2 | * |
| BLH147K601C154 | 140 | 3.2 | 3.4 | 34 | 35 | 20 | 2800 | 57.5 | 70 | 35 | 52.5 | 20.3 | 1.2 | * |
| BLH147K601C144 | 140 | 3.2 | 3.4 | 34 | 35 | 20 | 2800 | 57.5 | 65 | 45 | 52.5 | 20.3 | 1.2 | Yes |
| BLH157K601C164 | 150 | 3 | 3.3 | 36 | 35 | 20 | 3000 | 57.5 | 80 | 35 | 52.5 | 20.3 | 1.2 | * |
| 700 Vdc | | | | | | | | | | | | | | |
| BLH105K701A012 | 1 | 54 | 50.6 | 2.5 | 25 | 60 | 60 | 32 | 18 | 9 | 27.5 | \ | 0.8 | Yes |
| BLH205K701A012 | 2 | 35 | 49.5 | 3 | 25 | 60 | 120 | 32 | 18 | 9 | 27.5 | \ | 0.8 | Yes |
| BLH305K701A022 | 3 | 28 | 47.0 | 4.5 | 25 | 60 | 180 | 32 | 20 | 11 | 27.5 | \ | 0.8 | Yes |
| BLH335K701A052 | 3.3 | 26 | 31.5 | 5.5 | 25 | 60 | 198 | 32 | 28 | 14 | 27.5 | \ | 0.8 | Yes |
| BLH505K701A052 | 5 | 14 | 26.5 | 6 | 25 | 60 | 300 | 32 | 28 | 14 | 27.5 | \ | 0.8 | Yes |
| BLH605K701A062 | 6 | 14 | 16.9 | 6 | 25 | 60 | 360 | 32 | 28 | 18 | 27.5 | \ | 0.8 | Yes |
| BLH805K701A072 | 8 | 10 | 12.3 | 9 | 25 | 60 | 480 | 32 | 33 | 18 | 27.5 | \ | 0.8 | Yes |
| BLH106K701A072 | 10 | 7 | 14.3 | 10 | 25 | 60 | 600 | 32 | 33 | 18 | 27.5 | \ | 0.8 | Yes |
| BLH106K701A082 | 10 | 6.5 | 10.7 | 12 | 28 | 60 | 600 | 32 | 37 | 22 | 27.5 | \ | 0.8 | Yes |
| BLH106K701B012 | 10 | 7.5 | 10.1 | 11.5 | 30 | 35 | 350 | 42.5 | 18 | 24 | 37.5 | \ | 1 | Yes |
| BLH126K701A082 | 12 | 6 | 9.2 | 12.5 | 28 | 60 | 720 | 32 | 37 | 22 | 27.5 | \ | 0.8 | Yes |
| BLH126K701B012 | 12 | 7 | 9.8 | 12 | 30 | 35 | 420 | 42.5 | 18 | 24 | 37.5 | \ | 1 | Yes |
| BLH156K701B042 | 15 | 9 | 13.7 | 9 | 30 | 35 | 525 | 42.5 | 33.5 | 22 | 37.5 | \ | 1 | Yes |
| BLH156K701B044 | 15 | 8 | 12.5 | 10 | 30 | 35 | 525 | 42.5 | 33.5 | 22 | 37.5 | 10.2 | 1.2 | Yes |
| BLH156K701B084 | 15 | 8 | 12.5 | 10 | 30 | 35 | 525 | 42.5 | 40 | 20 | 37.5 | 10.2 | 1.2 | Yes |
| BLH206K701B064 | 20 | 7.5 | 11.6 | 12 | 30 | 35 | 700 | 42.5 | 37 | 28 | 37.5 | 10.2 | 1.2 | Yes |
| BLH226K701B094 | 22 | 6.5 | 9.3 | 14 | 30 | 35 | 770 | 42.5 | 44 | 24 | 37.5 | 10.2 | 1.2 | Yes |

*AEC Q200 may be available

Type BLH, DC Link Capacitors for Harsh Environments



85 °C / 85% RH , 1500h @ Vr, AEC-Q200 Qualified

| Part Number | Cap C (µF) | Typ ESR 10 kHz (mΩ) | Thermal Res (°C/W) | Irms 10 kHz 70 °C (A) | Typ ESL (nH) | dv/dt (V/µs) | Peak Current (A) | Dimensions | | | | | | AEC Q200 |
|----------------|------------|---------------------|--------------------|-----------------------|--------------|--------------|------------------|------------|--------|--------|--------|---------|--------|----------|
| | | | | | | | | L (mm) | H (mm) | T (mm) | P (mm) | P1 (mm) | d (mm) | |
| 700 Vdc | | | | | | | | | | | | | | |
| BLH256K701B094 | 25 | 6 | 7.8 | 16 | 30 | 35 | 875 | 42.5 | 44 | 24 | 37.5 | 10.2 | 1.2 | Yes |
| BLH306K701B104 | 30 | 5.8 | 8.7 | 16 | 30 | 35 | 1050 | 42.5 | 45 | 30 | 37.5 | 20.3 | 1.2 | Yes |
| BLH306K701C014 | 30 | 8.5 | 9.8 | 12 | 30 | 20 | 600 | 57.5 | 22 | 43 | 52.5 | 20.3 | 1.2 | Yes |
| BLH356K701B114 | 35 | 5.5 | 6.3 | 20 | 30 | 35 | 1225 | 42.5 | 50 | 35 | 37.5 | 20.3 | 1.2 | Yes |
| BLH406K701C064 | 40 | 5 | 8.5 | 14 | 35 | 20 | 800 | 57.5 | 45 | 30 | 52.5 | 20.3 | 1.2 | Yes |
| BLH456K701C064 | 45 | 5 | 7.6 | 15.5 | 35 | 20 | 900 | 57.5 | 45 | 30 | 52.5 | 20.3 | 1.2 | Yes |
| BLH506K701C084 | 50 | 4.8 | 8.1 | 15 | 35 | 20 | 1000 | 57.5 | 50 | 35 | 52.5 | 20.3 | 1.2 | Yes |
| BLH556K701C084 | 55 | 4.5 | 8.7 | 16 | 35 | 20 | 1100 | 57.5 | 50 | 35 | 52.5 | 20.3 | 1.2 | Yes |
| BLH606K701C084 | 60 | 4 | 7.7 | 18 | 35 | 20 | 1200 | 57.5 | 50 | 35 | 52.5 | 20.3 | 1.2 | Yes |
| BLH656K701C084 | 65 | 5 | 7.7 | 18 | 35 | 20 | 1300 | 57.5 | 50 | 35 | 52.5 | 20.3 | 1.2 | Yes |
| BLH656K701C114 | 65 | 4 | 6.3 | 20 | 35 | 20 | 1300 | 57.5 | 55 | 45 | 52.5 | 20.3 | 1.2 | Yes |
| BLH706K701C114 | 70 | 3.8 | 6.3 | 20 | 35 | 20 | 1400 | 57.5 | 55 | 45 | 52.5 | 20.3 | 1.2 | Yes |
| BLH756K701C114 | 75 | 3.8 | 6.3 | 20 | 35 | 20 | 1500 | 57.5 | 55 | 45 | 52.5 | 20.3 | 1.2 | Yes |
| BLH806K701C114 | 80 | 3.5 | 5.9 | 22 | 35 | 20 | 1600 | 57.5 | 55 | 45 | 52.5 | 20.3 | 1.2 | Yes |
| BLH806K701C124 | 80 | 3.4 | 5.8 | 23 | 35 | 20 | 1600 | 57.5 | 60 | 35 | 52.5 | 20.3 | 1.2 | * |
| BLH906K701C114 | 90 | 3.5 | 5.0 | 24 | 35 | 20 | 1800 | 57.5 | 55 | 45 | 52.5 | 20.3 | 1.2 | Yes |
| BLH906K701C124 | 90 | 3.5 | 5.0 | 24 | 35 | 20 | 1800 | 57.5 | 60 | 35 | 52.5 | 20.3 | 1.2 | * |
| BLH107K701C134 | 100 | 3.5 | 5.9 | 26 | 35 | 20 | 2000 | 57.5 | 65 | 35 | 52.5 | 20.3 | 1.2 | * |
| BLH117K701C154 | 110 | 3.4 | 5.8 | 28 | 35 | 20 | 2200 | 57.5 | 70 | 35 | 52.5 | 20.3 | 1.2 | * |
| BLH127K701C164 | 120 | 3 | 5.6 | 30 | 35 | 20 | 2400 | 57.5 | 80 | 35 | 52.5 | 20.3 | 1.2 | * |
| BLH137K701C144 | 130 | 2.8 | 5.4 | 32 | 35 | 20 | 2600 | 57.5 | 65 | 45 | 52.5 | 20.3 | 1.2 | Yes |
| 800 Vdc | | | | | | | | | | | | | | |
| BLH105K801A012 | 1 | 62 | 45.7 | 2 | 25 | 60 | 60 | 32 | 18 | 9 | 27.5 | \ | 0.8 | Yes |
| BLH205K801A022 | 2 | 31 | 42.5 | 3.5 | 25 | 60 | 120 | 32 | 20 | 11 | 27.5 | \ | 0.8 | Yes |
| BLH305K801A032 | 3 | 21 | 35.4 | 4.5 | 25 | 60 | 180 | 32 | 22 | 13 | 27.5 | \ | 0.8 | Yes |
| BLH335K801A052 | 3.3 | 25 | 32.1 | 4 | 25 | 60 | 198 | 32 | 28 | 14 | 27.5 | \ | 0.8 | Yes |
| BLH505K801A052 | 5 | 12 | 26.5 | 6 | 25 | 60 | 300 | 32 | 28 | 14 | 27.5 | \ | 0.8 | Yes |
| BLH605K801A062 | 6 | 10.5 | 18.6 | 7.5 | 25 | 60 | 360 | 32 | 28 | 18 | 27.5 | \ | 0.8 | Yes |
| BLH805K801A072 | 8 | 9.5 | 14.3 | 9.5 | 25 | 60 | 480 | 32 | 33 | 18 | 27.5 | \ | 0.8 | Yes |
| BLH905K801A072 | 9 | 8.5 | 9.1 | 10 | 25 | 60 | 540 | 32 | 33 | 18 | 27.5 | \ | 0.8 | Yes |
| BLH106K801A082 | 10 | 9.5 | 8.0 | 11.5 | 28 | 60 | 600 | 32 | 37 | 22 | 27.5 | \ | 0.8 | Yes |
| BLH106K801B032 | 10 | 12.5 | 15.8 | 8 | 30 | 35 | 350 | 42.5 | 32 | 19 | 37.5 | \ | 1 | Yes |
| BLH156K801B084 | 15 | 8 | 12.5 | 10 | 30 | 35 | 525 | 42.5 | 40 | 20 | 37.5 | 10.2 | 1.2 | Yes |
| BLH206K801B064 | 20 | 7 | 11.6 | 12 | 30 | 35 | 700 | 42.5 | 37 | 28 | 37.5 | 10.2 | 1.2 | Yes |
| BLH206K801B094 | 20 | 6.5 | 11.8 | 13.5 | 30 | 35 | 700 | 42.5 | 44 | 24 | 37.5 | 10.2 | 1.2 | Yes |
| BLH226K801B094 | 22 | 6 | 9.3 | 14 | 30 | 35 | 770 | 42.5 | 44 | 24 | 37.5 | 10.2 | 1.2 | Yes |
| BLH256K801B104 | 25 | 5.5 | 7.5 | 14 | 30 | 35 | 875 | 42.5 | 45 | 30 | 37.5 | 20.3 | 1.2 | Yes |
| BLH306K801B104 | 30 | 4.5 | 8.7 | 16 | 30 | 35 | 1050 | 42.5 | 45 | 30 | 37.5 | 20.3 | 1.2 | Yes |
| BLH356K801C064 | 35 | 6.5 | 7.6 | 14.2 | 35 | 20 | 700 | 57.5 | 45 | 30 | 52.5 | 20.3 | 1.2 | Yes |
| BLH406K801C064 | 40 | 6 | 8.5 | 14 | 35 | 20 | 800 | 57.5 | 45 | 30 | 52.5 | 20.3 | 1.2 | Yes |

*AEC Q200 may be available

Type BLH, DC Link Capacitors for Harsh Environments



85 °C / 85% RH , 1500h @ Vr, AEC-Q200 Qualified

| Part Number | Cap C (µF) | Typ ESR 10 kHz (mΩ) | Thermal Res (°C/W) | Irms 10 kHz 70 °C (A) | Typ ESL (nH) | dv/dt (V/µs) | Peak Current (A) | Dimensions | | | | | | AEC Q200 |
|----------------|------------|---------------------|--------------------|-----------------------|--------------|--------------|------------------|------------|--------|--------|--------|---------|--------|----------|
| | | | | | | | | L (mm) | H (mm) | T (mm) | P (mm) | P1 (mm) | d (mm) | |
| 800 Vdc | | | | | | | | | | | | | | |
| BLH456K801C064 | 45 | 5.5 | 7.6 | 15.5 | 35 | 20 | 900 | 57.5 | 45 | 30 | 52.5 | 20.3 | 1.2 | Yes |
| BLH476K801C084 | 47 | 5 | 6.5 | 17.5 | 35 | 20 | 940 | 57.5 | 50 | 35 | 52.5 | 20.3 | 1.2 | Yes |
| BLH506K801C084 | 50 | 5 | 7.8 | 16 | 35 | 20 | 1000 | 57.5 | 50 | 35 | 52.5 | 20.3 | 1.2 | Yes |
| BLH556K801C084 | 55 | 4.6 | 6.9 | 17 | 35 | 20 | 1100 | 57.5 | 50 | 35 | 52.5 | 20.3 | 1.2 | Yes |
| BLH656K801C124 | 65 | 4 | 7.3 | 19 | 35 | 20 | 1300 | 57.5 | 60 | 35 | 52.5 | 20.3 | 1.2 | * |
| BLH656K801C114 | 65 | 4 | 6.3 | 20 | 35 | 20 | 1300 | 57.5 | 55 | 45 | 52.5 | 20.3 | 1.2 | Yes |
| BLH706K801C114 | 70 | 3.8 | 6.3 | 20 | 35 | 20 | 1400 | 57.5 | 55 | 45 | 52.5 | 20.3 | 1.2 | Yes |
| BLH706K801C124 | 70 | 3.8 | 6.3 | 20 | 35 | 20 | 1400 | 57.5 | 60 | 35 | 52.5 | 20.3 | 1.2 | * |
| BLH756K801C114 | 75 | 3.8 | 6.0 | 22 | 35 | 20 | 1500 | 57.5 | 55 | 45 | 52.5 | 20.3 | 1.2 | Yes |
| BLH756K801C134 | 75 | 3.8 | 6.0 | 22 | 35 | 20 | 1500 | 57.5 | 65 | 35 | 52.5 | 20.3 | 1.2 | * |
| BLH806K801C144 | 80 | 3.5 | 5.9 | 23 | 35 | 20 | 1600 | 57.5 | 65 | 45 | 52.5 | 20.3 | 1.2 | Yes |
| BLH806K801C154 | 80 | 3.5 | 5.9 | 23 | 35 | 20 | 1600 | 57.5 | 70 | 35 | 52.5 | 20.3 | 1.2 | * |
| BLH906K801C144 | 90 | 3.3 | 5.0 | 25 | 35 | 20 | 1800 | 57.5 | 65 | 45 | 52.5 | 20.3 | 1.2 | Yes |
| BLH906K801C164 | 90 | 3.3 | 5.0 | 25 | 35 | 20 | 1800 | 57.5 | 80 | 35 | 52.5 | 20.3 | 1.2 | * |
| BLH107K801C144 | 100 | 3.2 | 4.8 | 28 | 35 | 20 | 2000 | 57.5 | 65 | 45 | 52.5 | 20.3 | 1.2 | Yes |
| 900 Vdc | | | | | | | | | | | | | | |
| BLH105K901A012 | 1 | 63 | 46.8 | 2 | 25 | 60 | 60 | 32 | 18 | 9 | 27.5 | \ | 0.8 | Yes |
| BLH205K901A022 | 2 | 25 | 44.4 | 3 | 25 | 60 | 120 | 32 | 20 | 11 | 27.5 | \ | 0.8 | Yes |
| BLH305K901A032 | 3 | 18.5 | 21.6 | 5 | 25 | 60 | 180 | 32 | 22 | 13 | 27.5 | \ | 0.8 | Yes |
| BLH335K901A042 | 3.3 | 18.5 | 21.6 | 5 | 25 | 60 | 198 | 32 | 24.5 | 15 | 27.5 | \ | 0.8 | Yes |
| BLH505K901A062 | 5 | 12.5 | 16.3 | 7 | 25 | 60 | 300 | 32 | 28 | 18 | 27.5 | \ | 0.8 | Yes |
| BLH605K901A072 | 6 | 11 | 14.2 | 8 | 25 | 60 | 360 | 32 | 33 | 18 | 27.5 | \ | 0.8 | Yes |
| BLH805K901A082 | 8 | 10 | 9.1 | 10.5 | 28 | 60 | 480 | 32 | 37 | 22 | 27.5 | \ | 0.8 | Yes |
| BLH106K901A082 | 10 | 10 | 6.9 | 12 | 28 | 60 | 600 | 32 | 37 | 22 | 27.5 | \ | 0.8 | Yes |
| BLH106K901B082 | 10 | 12 | 11.5 | 8.5 | 30 | 35 | 350 | 42.5 | 40 | 20 | 37.5 | \ | 1 | Yes |
| BLH106K901B084 | 10 | 11.5 | 9.6 | 9.5 | 30 | 35 | 350 | 42.5 | 40 | 20 | 37.5 | 10.2 | 1.2 | Yes |
| BLH156K901B092 | 15 | 8 | 11.3 | 10.5 | 30 | 35 | 525 | 42.5 | 44 | 24 | 37.5 | \ | 1 | Yes |
| BLH156K901B094 | 15 | 7.5 | 9.3 | 12 | 30 | 35 | 525 | 42.5 | 44 | 24 | 37.5 | 10.2 | 1.2 | Yes |
| BLH186K901B092 | 18 | 8 | 11.3 | 10.5 | 30 | 35 | 630 | 42.5 | 44 | 24 | 37.5 | \ | 1 | Yes |
| BLH186K901B094 | 18 | 7.5 | 9.3 | 12 | 30 | 35 | 630 | 42.5 | 44 | 24 | 37.5 | 10.2 | 1.2 | Yes |
| BLH206K901B102 | 20 | 6 | 8.5 | 14 | 30 | 35 | 700 | 42.5 | 45 | 30 | 37.5 | \ | 1 | Yes |
| BLH206K901B104 | 20 | 5.5 | 8.1 | 15 | 30 | 35 | 700 | 42.5 | 45 | 30 | 37.5 | 20.3 | 1.2 | Yes |
| BLH206K901C014 | 20 | 8.6 | 10.5 | 12 | 30 | 20 | 400 | 57.5 | 22 | 43 | 52.5 | 20.3 | 1.2 | Yes |
| BLH256K901B104 | 25 | 5.5 | 6.3 | 17 | 30 | 35 | 875 | 42.5 | 45 | 30 | 37.5 | 20.3 | 1.2 | Yes |
| BLH306K901B114 | 30 | 5 | 5.5 | 19 | 30 | 35 | 1050 | 42.5 | 50 | 35 | 37.5 | 20.3 | 1.2 | Yes |
| BLH306K901C064 | 30 | 5.5 | 8.1 | 15 | 35 | 20 | 600 | 57.5 | 45 | 30 | 52.5 | 20.3 | 1.2 | Yes |
| BLH356K901C084 | 35 | 5.5 | 7.6 | 15.5 | 35 | 20 | 700 | 57.5 | 50 | 35 | 52.5 | 20.3 | 1.2 | Yes |
| BLH406K901C084 | 40 | 6.5 | 6.0 | 16 | 35 | 20 | 800 | 57.5 | 50 | 35 | 52.5 | 20.3 | 1.2 | Yes |
| BLH506K901C084 | 50 | 3.6 | 8.6 | 18 | 35 | 20 | 1000 | 57.5 | 50 | 35 | 52.5 | 20.3 | 1.2 | Yes |

*AEC Q200 may be available

Type BLH, DC Link Capacitors for Harsh Environments

85 °C / 85% RH , 1500h @ Vr, AEC-Q200 Qualified

| Part Number | Cap C (µF) | Typ ESR 10 kHz (mΩ) | Thermal Res (°C/W) | Irms 10 kHz 70 °C (A) | Typ ESL (nH) | dv/dt (V/µs) | Peak Current (A) | Dimensions | | | | | | AEC Q200 |
|------------------|------------|---------------------|--------------------|-----------------------|--------------|--------------|------------------|------------|--------|--------|--------|---------|--------|----------|
| | | | | | | | | L (mm) | H (mm) | T (mm) | P (mm) | P1 (mm) | d (mm) | |
| 900 Vdc | | | | | | | | | | | | | | |
| BLH556K901C124 | 55 | 3.5 | 7.9 | 19 | 35 | 20 | 1100 | 57.5 | 60 | 35 | 52.5 | 20.3 | 1.2 | * |
| BLH556K901C114 | 55 | 3.4 | 7.4 | 20 | 35 | 20 | 1100 | 57.5 | 55 | 45 | 52.5 | 20.3 | 1.2 | Yes |
| BLH606K901C114 | 60 | 3.4 | 7.4 | 20 | 35 | 20 | 1200 | 57.5 | 55 | 45 | 52.5 | 20.3 | 1.2 | Yes |
| BLH656K901C154 | 65 | 3.3 | 7.0 | 22 | 35 | 20 | 1300 | 57.5 | 70 | 35 | 52.5 | 20.3 | 1.2 | * |
| BLH706K901C114 | 70 | 3.2 | 6.8 | 24 | 35 | 20 | 1400 | 57.5 | 55 | 45 | 52.5 | 20.3 | 1.2 | Yes |
| BLH706K901C164 | 70 | 3.2 | 6.8 | 24 | 35 | 20 | 1400 | 57.5 | 80 | 35 | 52.5 | 20.3 | 1.2 | * |
| BLH806K901C144 | 80 | 3.2 | 6.7 | 25 | 35 | 20 | 1600 | 57.5 | 65 | 45 | 52.5 | 20.3 | 1.2 | Yes |
| 1000 Vdc | | | | | | | | | | | | | | |
| BLH105K102A022 | 1 | 45 | 35.6 | 2.5 | 25 | 80 | 80 | 32 | 20 | 11 | 27.5 | \ | 0.8 | Yes |
| BLH205K102A032 | 2 | 30 | 27.2 | 3.5 | 25 | 80 | 160 | 32 | 22 | 13 | 27.5 | \ | 0.8 | Yes |
| BLH305K102A042 | 3 | 25 | 16.0 | 5 | 25 | 80 | 240 | 32 | 24.5 | 15 | 27.5 | \ | 0.8 | Yes |
| BLH505K102A072 | 5 | 14 | 11.2 | 8 | 25 | 80 | 400 | 32 | 33 | 18 | 27.5 | \ | 0.8 | Yes |
| BLH805K102A082 | 8 | 12 | 8.3 | 10 | 28 | 80 | 640 | 32 | 37 | 22 | 27.5 | \ | 0.8 | Yes |
| BLH106K102B082 | 10 | 12 | 11.5 | 8.5 | 30 | 40 | 400 | 42.5 | 40 | 20 | 37.5 | \ | 1 | Yes |
| BLH106K102B084 | 10 | 11.5 | 9.6 | 9.5 | 30 | 40 | 400 | 42.5 | 40 | 20 | 37.5 | 10.2 | 1.2 | Yes |
| BLH126K102B094 | 12 | 9 | 10.1 | 10.5 | 30 | 40 | 480 | 42.5 | 44 | 24 | 37.5 | 10.2 | 1.2 | Yes |
| BLH156K102B092 | 15 | 8 | 11.3 | 10.5 | 30 | 40 | 600 | 42.5 | 44 | 24 | 37.5 | \ | 1 | Yes |
| BLH156K102B094 | 15 | 7.5 | 9.3 | 12 | 30 | 40 | 600 | 42.5 | 44 | 24 | 37.5 | 10.2 | 1.2 | Yes |
| BLH156K102B104 | 15 | 7.5 | 6.8 | 14 | 30 | 40 | 600 | 42.5 | 45 | 30 | 37.5 | 20.3 | 1.2 | Yes |
| BLH156K102C014 | 15 | 8.5 | 7.9 | 12 | 30 | 40 | 600 | 57.5 | 22 | 43 | 52.5 | 20.3 | 1.2 | Yes |
| BLH206K102B104 | 20 | 6.5 | 6.8 | 15 | 30 | 40 | 800 | 42.5 | 45 | 30 | 37.5 | 20.3 | 1.2 | Yes |
| BLH256K102B114 | 25 | 5.5 | 5.6 | 18 | 30 | 40 | 1000 | 42.5 | 50 | 35 | 37.5 | 20.3 | 1.2 | Yes |
| BLH306K102C064 | 30 | 5.5 | 8.1 | 15 | 35 | 25 | 750 | 57.5 | 45 | 30 | 52.5 | 20.3 | 1.2 | Yes |
| BLH356K102C084 | 35 | 5.5 | 7.1 | 16 | 35 | 25 | 875 | 57.5 | 50 | 35 | 52.5 | 20.3 | 1.2 | Yes |
| BLH406K102C084 | 40 | 5 | 7.8 | 16 | 35 | 25 | 1000 | 57.5 | 50 | 35 | 52.5 | 20.3 | 1.2 | Yes |
| BLH406K102C114 | 40 | 5 | 7.6 | 17 | 35 | 25 | 1000 | 57.5 | 55 | 45 | 52.5 | 20.3 | 1.2 | Yes |
| BLH506K102C114 | 50 | 4.5 | 6.2 | 19 | 35 | 25 | 1250 | 57.5 | 55 | 45 | 52.5 | 20.3 | 1.2 | Yes |
| BLH506K102C134 | 50 | 4.5 | 6.2 | 19 | 35 | 25 | 1250 | 57.5 | 65 | 35 | 52.5 | 20.3 | 1.2 | * |
| BLH556K102C154 | 55 | 4.4 | 6.1 | 20 | 35 | 25 | 1375 | 57.5 | 70 | 35 | 52.5 | 20.3 | 1.2 | * |
| BLH606K102C164 | 60 | 4 | 5.2 | 22 | 35 | 25 | 1500 | 57.5 | 80 | 35 | 52.5 | 20.3 | 1.2 | * |
| BLH606K102C144 | 60 | 4 | 5.2 | 22 | 35 | 25 | 1500 | 57.5 | 65 | 45 | 52.5 | 20.3 | 1.2 | Yes |
| BLH656K102C144-1 | 65 | 1.8 | 3.2 | 26.5 | 30 | 20 | 1300 | 57.5 | 65 | 45 | 52.5 | 20.3 | 1.2 | Yes |
| 1100 Vdc | | | | | | | | | | | | | | |
| BLH105K112A022 | 1 | 45 | 35.6 | 2.5 | 25 | 80 | 80 | 32 | 20 | 11 | 27.5 | \ | 0.8 | Yes |
| BLH155K112A032 | 1.5 | 30 | 27.2 | 3.5 | 25 | 80 | 120 | 32 | 22 | 13 | 27.5 | \ | 0.8 | Yes |
| BLH205K112A042 | 2 | 25 | 25.0 | 4 | 25 | 80 | 160 | 32 | 24.5 | 15 | 27.5 | \ | 0.8 | Yes |
| BLH225K112A052 | 2.2 | 16.5 | 24.2 | 5 | 25 | 80 | 176 | 32 | 28 | 14 | 27.5 | \ | 0.8 | Yes |
| BLH335K112A062 | 3.3 | 11.5 | 20.6 | 6.5 | 25 | 80 | 264 | 32 | 28 | 18 | 27.5 | \ | 0.8 | Yes |
| BLH405K112A072 | 4 | 10.5 | 14.9 | 8 | 25 | 80 | 320 | 32 | 33 | 18 | 27.5 | \ | 0.8 | Yes |
| BLH505K112A082 | 5 | 9.5 | 14.6 | 8.5 | 28 | 80 | 400 | 32 | 37 | 22 | 27.5 | \ | 0.8 | Yes |
| BLH685K112B044 | 6.8 | 13.5 | 5.1 | 12 | 30 | 40 | 272 | 42.5 | 33.5 | 22 | 37.5 | 10.2 | 1.2 | Yes |

*AEC Q200 may be available

Type BLH, DC Link Capacitors for Harsh Environments

85 °C / 85% RH , 1500h @ Vr, AEC-Q200 Qualified

| Part Number | Cap C (µF) | Typ ESR 10 kHz (mΩ) | Thermal Res (°C/W) | Irms 10 kHz 70 °C (A) | Typ ESL (nH) | dv/dt (V/µs) | Peak Current (A) | Dimensions | | | | | | AEC Q200 |
|-----------------|------------|---------------------|--------------------|-----------------------|--------------|--------------|------------------|------------|--------|--------|--------|---------|--------|----------|
| | | | | | | | | L (mm) | H (mm) | T (mm) | P (mm) | P1 (mm) | d (mm) | |
| 1100 Vdc | | | | | | | | | | | | | | |
| BLH805K112B082 | 8 | 14 | 6.5 | 10.5 | 30 | 40 | 320 | 42.5 | 40 | 20 | 37.5 | \ | 1 | Yes |
| BLH805K112B084 | 8 | 12.5 | 5.1 | 12.5 | 30 | 40 | 320 | 42.5 | 40 | 20 | 37.5 | 10.2 | 1.2 | Yes |
| BLH805K112B054 | 8 | 12.5 | 5.1 | 12.5 | 30 | 40 | 320 | 42.5 | 37 | 22 | 37.5 | 10.2 | 1.2 | Yes |
| BLH905K112B054 | 9 | 12.2 | 5.0 | 12.8 | 30 | 40 | 360 | 42.5 | 37 | 22 | 37.5 | 10.2 | 1.2 | Yes |
| BLH106K112B092 | 10 | 9 | 5.7 | 14 | 30 | 40 | 400 | 42.5 | 44 | 24 | 37.5 | \ | 1 | Yes |
| BLH106K112B094 | 10 | 8.5 | 5.2 | 15 | 30 | 40 | 400 | 42.5 | 44 | 24 | 37.5 | 10.2 | 1.2 | Yes |
| BLH126K112B104 | 12 | 7.5 | 5.5 | 15.5 | 30 | 40 | 480 | 42.5 | 45 | 30 | 37.5 | 20.3 | 1.2 | Yes |
| BLH156K112B104 | 15 | 7 | 5.4 | 16 | 30 | 40 | 600 | 42.5 | 45 | 30 | 37.5 | 20.3 | 1.2 | Yes |
| BLH186K112B114 | 18 | 7.5 | 5.5 | 15.5 | 30 | 40 | 720 | 42.5 | 50 | 35 | 37.5 | 20.3 | 1.2 | Yes |
| BLH206K112B114 | 20 | 7.2 | 5.5 | 16.5 | 35 | 40 | 800 | 42.5 | 50 | 35 | 37.5 | 20.3 | 1.2 | Yes |
| BLH206K112C064 | 20 | 8.5 | 8.2 | 12 | 35 | 25 | 500 | 57.5 | 45 | 30 | 52.5 | 20.3 | 1.2 | Yes |
| BLH256K112C084 | 25 | 8.2 | 8.0 | 13 | 35 | 25 | 625 | 57.5 | 50 | 35 | 52.5 | 20.3 | 1.2 | Yes |
| BLH306K112C084 | 30 | 5 | 8.9 | 15 | 35 | 25 | 750 | 57.5 | 50 | 35 | 52.5 | 20.3 | 1.2 | Yes |
| BLH356K112C124 | 35 | 4.9 | 8.7 | 16 | 35 | 25 | 875 | 57.5 | 60 | 35 | 52.5 | 20.3 | 1.2 | * |
| BLH406K112C134 | 40 | 5.5 | 6.3 | 17 | 35 | 25 | 1000 | 57.5 | 65 | 35 | 52.5 | 20.3 | 1.2 | * |
| BLH406K112C114 | 40 | 5.5 | 6.3 | 17 | 35 | 25 | 1000 | 57.5 | 55 | 45 | 52.5 | 20.3 | 1.2 | Yes |
| BLH456K112C154 | 45 | 5.4 | 6.2 | 18 | 35 | 25 | 1125 | 57.5 | 70 | 35 | 52.5 | 20.3 | 1.2 | * |
| BLH506K112C144 | 50 | 5.2 | 5.8 | 19.5 | 35 | 25 | 1250 | 57.5 | 65 | 45 | 52.5 | 20.3 | 1.2 | Yes |
| 1200 Vdc | | | | | | | | | | | | | | |
| BLH105K122A022 | 1 | 32.5 | 15.2 | 4.5 | 25 | 90 | 90 | 32 | 20 | 11 | 27.5 | \ | 0.8 | Yes |
| BLH205K122A042 | 2 | 32.5 | 12.3 | 5 | 25 | 90 | 180 | 32 | 24.5 | 15 | 27.5 | \ | 0.8 | Yes |
| BLH225K122A062 | 2.2 | 17 | 19.4 | 5.5 | 25 | 90 | 198 | 32 | 28 | 18 | 27.5 | \ | 0.8 | Yes |
| BLH305K122A062 | 3 | 16 | 12.8 | 7 | 25 | 90 | 270 | 32 | 28 | 18 | 27.5 | \ | 0.8 | Yes |
| BLH335K122A072 | 3.3 | 13.5 | 11.6 | 8 | 25 | 90 | 297 | 32 | 33 | 18 | 27.5 | \ | 0.8 | Yes |
| BLH505K122A082 | 5 | 12 | 8.3 | 10 | 28 | 90 | 450 | 32 | 37 | 22 | 27.5 | \ | 0.8 | Yes |
| BLH505K122B042 | 5 | 15.5 | 11.5 | 7.5 | 30 | 45 | 225 | 42.5 | 33.5 | 22 | 37.5 | \ | 1 | Yes |
| BLH605K122B082 | 6 | 15.5 | 11.5 | 7.5 | 30 | 45 | 270 | 42.5 | 40 | 20 | 37.5 | \ | 1 | Yes |
| BLH705K122B054 | 7 | 15.2 | 11.0 | 8 | 30 | 45 | 315 | 42.5 | 37 | 22 | 37.5 | 10.2 | 1.2 | Yes |
| BLH805K122B094 | 8 | 12.5 | 9.9 | 9 | 30 | 45 | 360 | 42.5 | 44 | 24 | 37.5 | 10.2 | 1.2 | Yes |
| BLH106K122B094 | 10 | 10.5 | 9.5 | 10 | 30 | 45 | 450 | 42.5 | 44 | 24 | 37.5 | 10.2 | 1.2 | Yes |
| BLH106K122B104 | 10 | 8 | 8.7 | 12 | 30 | 45 | 450 | 42.5 | 45 | 30 | 37.5 | 20.3 | 1.2 | Yes |
| BLH156K122B114 | 15 | 6.5 | 6.8 | 15 | 30 | 45 | 675 | 42.5 | 50 | 35 | 37.5 | 20.3 | 1.2 | Yes |
| BLH206K122C064 | 20 | 8.5 | 9.7 | 13 | 35 | 30 | 600 | 57.5 | 45 | 30 | 52.5 | 20.3 | 1.2 | Yes |
| BLH256K122C084 | 25 | 6.5 | 9.1 | 15 | 35 | 30 | 750 | 57.5 | 50 | 35 | 52.5 | 20.3 | 1.2 | Yes |
| BLH306K122C114 | 30 | 5.5 | 8.1 | 17 | 35 | 30 | 900 | 57.5 | 55 | 45 | 52.5 | 20.3 | 1.2 | Yes |
| BLH306K122C124 | 30 | 5.5 | 8.1 | 17 | 35 | 30 | 900 | 57.5 | 60 | 35 | 52.5 | 20.3 | 1.2 | * |
| BLH356K122C114 | 35 | 5 | 6.9 | 18 | 35 | 30 | 1050 | 57.5 | 55 | 45 | 52.5 | 20.3 | 1.2 | Yes |
| BLH356K122C154 | 35 | 5 | 6.9 | 18 | 35 | 30 | 1050 | 57.5 | 70 | 35 | 52.5 | 20.3 | 1.2 | * |
| BLH406K122C144 | 40 | 4.5 | 5.6 | 20 | 35 | 30 | 1200 | 57.5 | 65 | 45 | 52.5 | 20.3 | 1.2 | Yes |
| BLH456K122C144 | 45 | 4.3 | 5.5 | 22 | 35 | 30 | 1350 | 57.5 | 65 | 45 | 52.5 | 20.3 | 1.2 | Yes |

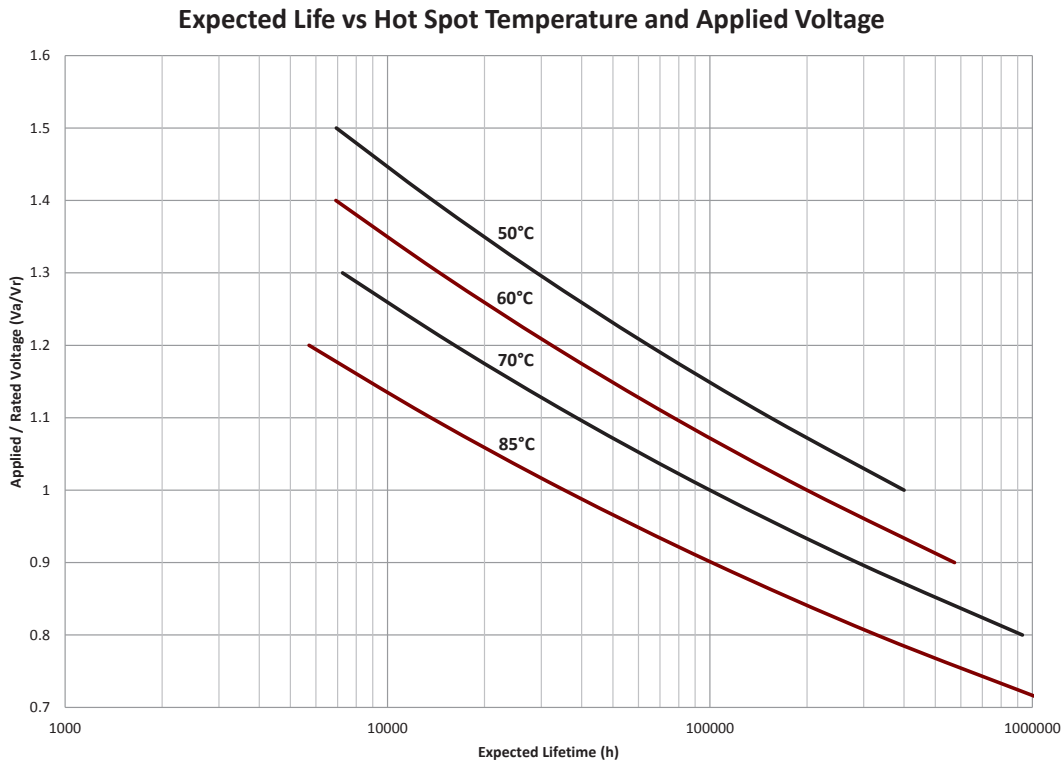
*AEC Q200 may be available

Type BLH, DC Link Capacitors for Harsh Environments



85 °C / 85% RH , 1500h @ Vr, AEC-Q200 Qualified

Typical Performance Curves



Notice and Disclaimer: All product drawings, descriptions, specifications, statements, information and data (collectively, the “Information”) in this datasheet or other publication are subject to change. The customer is responsible for checking, confirming and verifying the extent to which the Information contained in this datasheet or other publication is applicable to an order at the time the order is placed. All Information given herein is believed to be accurate and reliable, but it is presented without any guarantee, warranty, representation or responsibility of any kind, expressed or implied. Statements of suitability for certain applications are based on the knowledge that the Cornell Dubilier company providing such statements (“Cornell Dubilier”) has of operating conditions that such Cornell Dubilier company regards as typical for such applications, but are not intended to constitute any guarantee, warranty or representation regarding any such matter – and Cornell Dubilier specifically and expressly disclaims any guarantee, warranty or representation concerning the suitability for a specific customer application, use, storage, transportation, or operating environment. The Information is intended for use only by customers who have the requisite experience and capability to determine the correct products for their application. Any technical advice inferred from this Information or otherwise provided by Cornell Dubilier with reference to the use of any Cornell Dubilier products is given gratis (unless otherwise specified by Cornell Dubilier), and Cornell Dubilier assumes no obligation or liability for the advice given or results obtained. Although Cornell Dubilier strives to apply the most stringent quality and safety standards regarding the design and manufacturing of its products, in light of the current state of the art, isolated component failures may still occur. Accordingly, customer applications which require a high degree of reliability or safety should employ suitable designs or other safeguards (such as installation of protective circuitry or redundancies or other appropriate protective measures) in order to ensure that the failure of an electrical component does not result in a risk of personal injury or property damage. Although all product-related warnings, cautions and notes must be observed, the customer should not assume that all safety measures are indicated in such warnings, cautions and notes, or that other safety measures may not be required.