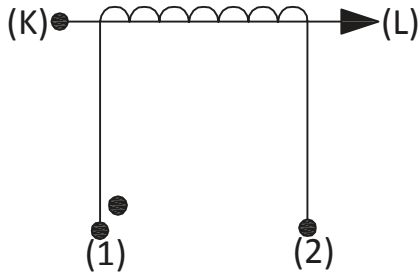


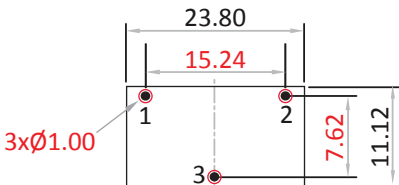
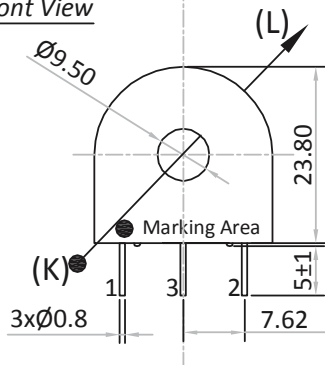


| | |
|-------------------|---------------------|
| Product Type | Current Transformer |
| AMGIS Part Number | CT1020 |
| | |
| | |

SCHEMATIC:**ELECTRICAL SPECIFICATION:**

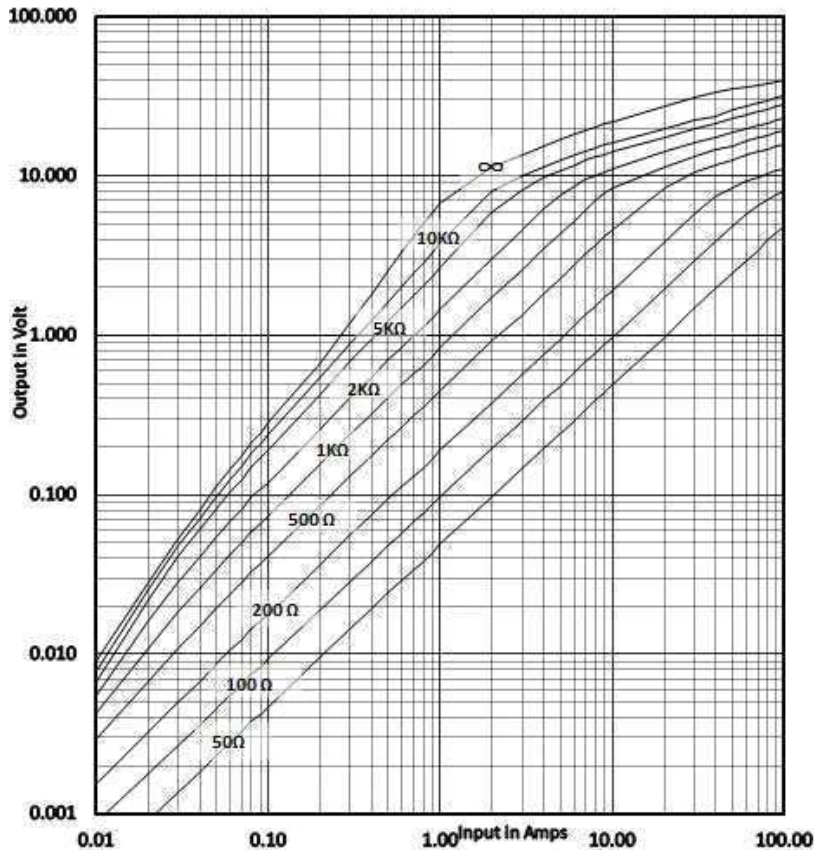
| | |
|--------------------------------|---|
| Rated input current | = 20Amps |
| Primary to Secondary isolation | = 2500VAC |
| Operating Frequency | = 50 / 60 Hz |
| Turns Ratio | = 1 : 1000 |
| DC Resistance | = 41.80 Ω |
| Output Voltage | = 2.0V @ 20A / 100 Ω , 0.0400W |
| Io @ Vrms : 2.65V | = 628 μ Arms |
| Ratio Correction factor (RCF*) | = 1.01 @ 10% (Multiply current reading by this factor to compensate for transformer losses) |

| Volt/Amp at rated Ip for different loads | | | |
|--|--------------|---------------|---------------|
| 100 Ω | 500 Ω | 2000 Ω | 5000 Ω |
| 0.10 | 0.43 | 0.76 | 0.93 |

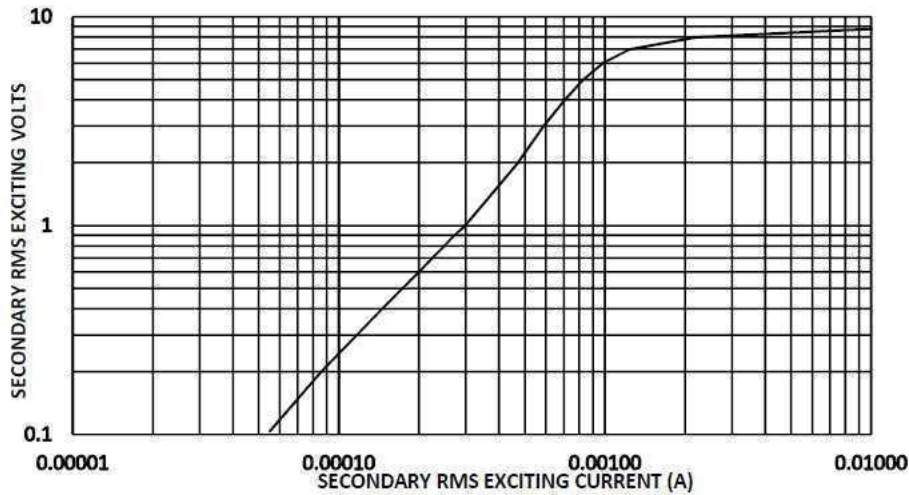
MECHANICAL SPECIFICATION :**OUTPUT RESPONSE vs INPUT CURRENT @ RATED BURDEN :****Top View (Suggested Pad Layout)****Front View**

All dimensions are in mm
Linear dimensional tolerance ± 0.2 mm

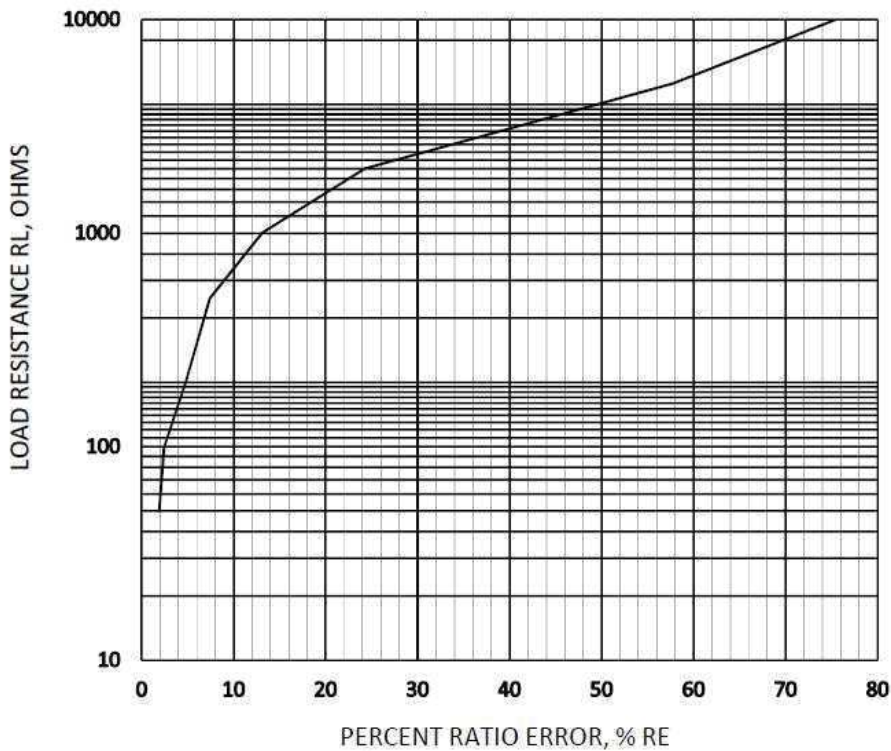
Note : Un-Used pin \rightarrow #3



TYPICAL EXCITATION CURVE :




RATIO ERROR (%) vs RATED BURDEN @ INPUT CURRENT :



TRAFO WEIGHT:

Approx. Weight = 0.0163 kg / pc

MARKING INFORMATION:

Amgis
 CT1020
 Yr/Wk code
 Dot mark for Start pin identification

| | | | | |
|-------------------------|-------|-----|-----------|-------------|
| -----Initial Issue----- | 1 | 0 | Balaji. R | 18-Nov'2015 |
| Changes | Issue | Rev | Initial | Date |