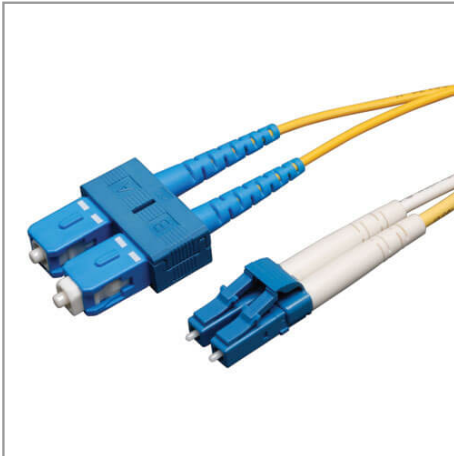


Duplex Singlemode 9/125 Fiber Patch Cable (LC/SC), 10M (33 ft.)

MODEL NUMBER: N366-10M



Features

- Manufactured from 9/125 duplex (zipcord) fiber
- PVC jacket
- Length: 10 meters. Connectors: 2 x SC; 2 x LC
- Insertion loss testing performed on every connector (0.2db typical) and provided with cable
- Beveled edge on ends of glass makes insertion of plug a breeze
- Fiber made from glass (not a polymer)
- Fiber optic distributed data interface (FDDI) rated
- OFNR (riser rated)

Specifications

| OVERVIEW | |
|-----------------------|-------------------|
| UPC Code | 037332122858 |
| Technology | Singlemode |
| Optical Mode | OS2 |
| PHYSICAL | |
| Cable Jacket Color | Yellow |
| Connector Color | Blue; Blue; White |
| Cable Jacket Material | LSZH |
| Cable Jacket Rating | OFNR |

Highlights

- Premium PVC 9/125 micron singlemode patch cables
- Attenuation loss meets or exceeds the latest industry standards
- Twice the bandwidth throughput of multimode cable

System Requirements

- Any fiber optic hardware or NIC card requiring singlemode duplex cable with LC/SC connectors

Package Includes

- 10-meter Duplex Singlemode Fiber Patch Cable, LC/SC

| | |
|--------------------------------------|---|
| Clad Diameter (microns) | 125 |
| Core Diameter (microns) | 9 |
| Number of Fibers | 2 |
| Cable Length (ft.) | 32.8 |
| Cable Length (m) | 10.00 |
| Cable Length (in.) | 393.7 |
| Minimum Bend Radius | 20 mm (Dynamic); 10 mm (Static) |
| Shipping Dimensions (hwd / in.) | 9.00 x 7.00 x 0.75 |
| Shipping Dimensions (hwd / cm) | 22.86 x 17.78 x 1.90 |
| Shipping Weight (lbs.) | 0.10 |
| Shipping Weight (kg) | 0.05 |
| ENVIRONMENTAL | |
| Operating Temperature Range | -4 to 140 F (-20 to 60 C) |
| Storage Temperature Range | -4 to 140 F (-20 to 60 C) |
| Operating Humidity Range | 5% to 85% RH, Non-Condensing |
| Storage Humidity Range | 35% to 65% RH, Non-Condensing |
| COMMUNICATIONS | |
| Network Compatibility | 1 Gbps (Gigabit); 10 Gbps; 25 Gbps; 40 Gbps; 100 Gbps; 400 Gbps |
| Attenuation @ 1310NM | 0.36 dB/km |
| Attenuation @ 1550NM | 0.22 dB/km |
| Insertion Loss | 0.30 dB |
| CONNECTIONS | |
| Side A - Connector 1 | LC DUPLEX (MALE) |
| Side B - Connector 1 | SC DUPLEX (MALE) |
| Endface Polish | UPC |
| FEATURES & SPECIFICATIONS | |
| Push/Pull Tabs | No |
| Breakout | No |
| Trunk | No |
| STANDARDS & COMPLIANCE | |
| Product Compliance | RoHS; REACH |

WARRANTY & SUPPORT

Product Warranty Period
(Worldwide)

Lifetime limited warranty