

HOW TO INSTALL FLEXO MOUNTING SYSTEM...

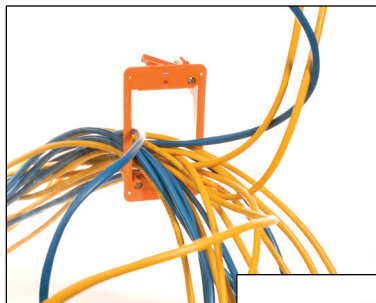


The Ultimate Termination Solution For Flexo Sleeving

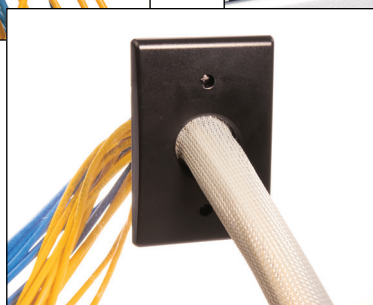
**Easy Field Installation • Universal Screw Mount • Easy Clip, No Special Tools Required
Fits In Single Gang Wall Box • Super Strong Strain Relief For Your Wires**



At the heart of the FMS is the Locking Collar, which when used in conjunction with the Metal Retaining Ring, permanently holds the sleeve.



Before...



After.



When used in conjunction with the Techflex sleeving, the FMS creates a lasting and attractive terminated assembly.

HOW TO INSTALL FLEXO MOUNTING SYSTEM...



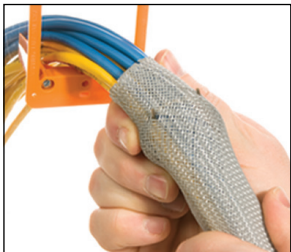
Our new patented Flexo Mounting System (FMS) has been created to attractively terminate applications with a secure mountable end. This new Mounting System is engineered to work great with Flexo PET 1½" & 1¾", and with Flexo Clean Cut 1½". The installer friendly part clamps securely onto the sleeve without attaching to your wiring for ideal strain relief. The two piece construction removes any limitations in size created by large connectors and preserves the sleeving's expandability. Automotive grade glass filled nylon construction is suitable for a variety of applications.



Step 1
Install the sleeving over your wire bundle. Try to closely match the sleeving diameter to your bundle diameter so the bundle is fairly tightly managed. Leave about 2" of additional length to put through to the other side of the finished assembly.

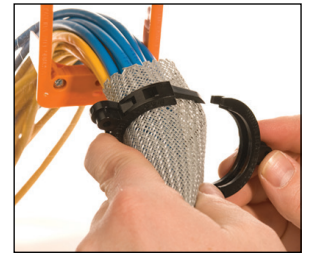


Step 2
Open the metal retaining ring and slide it over your bundle. Install the ring INSIDE of the sleeving so that the registration teeth protrude through the sleeving.

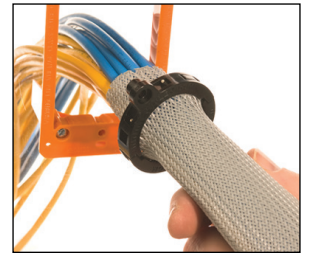


Step 3
Take one of the locking collar halves and place it over the teeth on the retaining ring. It is important that the teeth of the retaining ring protrude into the appropriate holes in the locking collar.

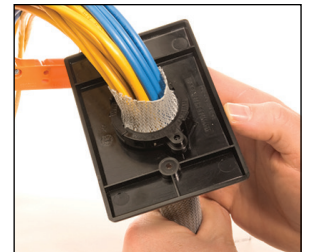
Step 4
Hold it in place while you align the other half of the locking collar to the locking tabs on the ends of both halves. Squeeze the 2 halves together until both ends snap and lock together.



Step 5
Smooth out the sleeving to allow the wall plate to easily slide up the length of the cable bundle. Slide the wall plate onto the assembly so that the side that faces the wall is against the locking collar. Snap the locking collar over the registration pins on the inside of the wall plate.



Step 6
Screw the wall plate into the work-box with the color matched screws, included. Congratulations! You now have a strong and attractive cable management solution that will stay secure for years.



Part #	Description	Available Colors	Lbs/Pkg.
FMS1.50FL	Packaging of a Single Locking Collar	Black (BK)	0.03
FMS1.50FL5	Packaging of 5 Pc. Locking Collar	Black (BK)	0.15
FMP1.50PLATE	Wall Plate only (includes 2 screws)	Black (BK), Almond (BE) & White (WH)	0.09
FMS1.50FK	Finishing Pack: 1 Locking Collar & 1 Wall Plate	Black (BK), *Almond (BE) & *White (WH) (*Plate only)	0.12