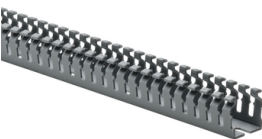


Specification Sheet

Part Number: 184-11000



Narrow fingers reduce fanning of the wires to the terminal blocks, presenting a neater appearance.

Each finger is provided with a double restriction to hold wires in the bottom portion of the duct, allowing for easier installation.

Mounting holes are uniform in size and are offered every 2 inches to accommodate compact designs and ease installation.

Optional covers snap on and off easily, and are provided with a non-slip lining that insures the covers remain in place during vibration.

High Density Slotted Wall Wiring Duct, 1" x 1", Non-Adhesive, PVC, Gray, 30ft/Box

Article Number	184-11000
Type	SLHD1X1
Color	Gray (GY)
Quantity Per	box
Product Description	HellermannTyton Pro-Duct High-Density, Slotted-Wall Wiring Duct features narrow fingers equaling a 2 to 1 finger ratio compared to standard slotted wiring duct. With the narrow fingers, compact designs and components are more easily accommodated.
Short Description	High Density Slotted Wall Wiring Duct, 1" x 1", Non-Adhesive, PVC, Gray, 30ft/Box

Global Part Name	SLHD1X1-PVC-GY
------------------	----------------

Length L (Imperial)	6.0
---------------------	-----

Length L (Metric)	1.83
-------------------	------

Width W (Imperial)	1.0
--------------------	-----

Width W (Metric)	25.4
------------------	------

Height H (Imperial)	1.06
---------------------	------

Height H (Metric)	26.9
-------------------	------

Mounting Hole Centers (Imperial)	2.0
----------------------------------	-----

Material	Polyvinylchloride (PVC)
----------	-------------------------

Material Shortcut	PVC
-------------------	-----

Flammability	Self-extinguishing
--------------	--------------------

Halogen Free	No
--------------	----

Operating Temperature	+122°F (+50°C)
-----------------------	----------------

Reach Compliant (Article 33)	No
------------------------------	----

ROHS Compliant	Yes
Certification/Specification	EN 50085-2-3_1A EN 50085-1:2005 + A1:2013 UL CSA
UL Recognized (US)	Yes
Package Quantity (Imperial)	30.0
Package Quantity (Metric)	9.14
Customs Number	3925900000