

LTC3815EUFE

6A Monolithic Synchronous Step-Down Converter with Power System Management

DESCRIPTION

Demonstration circuit 2065A is a synchronous buck converter using the [LTC®3815EUFE](#), a 6A monolithic buck regulator with power system management. The LTC3815 has the PMBus compliant serial interface and features, such as programmable output voltage margining, temperature monitoring, current and voltage read back, and fault status, etc.

The DC2065A uses a single resistor to program output voltage. The input range of this board is from 2.25V to 5.5V, and the output voltage can be programmed from 0.4V to 72% of V_{IN} . The output voltage can be margined $\pm 25\%$ with 0.1% resolution via a PMBus-compliant serial interface. The serial interface can also be used for time-averaged ($\sim 4\text{ms}$) and peak input/output current, input/output voltage, temperature and fault status.

To explore the power system management features of the parts, download the GUI software LTpowerPlay™ onto your PC and use LTC's I²C/SMBus/PMBus Dongle DC1613A to connect to the board. LTpowerPlay allows the user to reconfigure the part on the fly, view telemetry of voltage, current, temperature and fault status.

GUI DOWNLOAD

The software can be downloaded from:

<http://www.linear.com/ltpowerplay>

For more details and instructions of LTpowerPlay, please refer to LTpowerPlay for LTC3815 Quick Start Guide.

Design files for this circuit board are available at
<http://www.linear.com/demo/DC2065A>

LT, LT, LTC, LTM, Linear Technology and the Linear logo are registered trademarks and LTpowerPlay is a trademark of Linear Technology Corporation. All other trademarks are the property of their respective owners.

PERFORMANCE SUMMARY

Specifications are at $T_A = 25^\circ\text{C}$

SYMBOL	PARAMETER	CONDITIONS	MIN	TYP	MAX	UNITS
V_{IN}	Input Supply Range		2.25		5.5	V
V_{OUT}	Output Voltage Range	$I_{OUT} = 0\text{A to } 6\text{A}$, $V_{IN} = 2.25\text{V to } 5.5\text{V}$	0.4		$0.72 \cdot V_{IN}$	V
I_{OUT}	Output Current Range		0		6	A
F_{SW}	Factory Default Switching			1		MHz
EFF	Full Load Efficiency	$V_{IN} = 5\text{V}$, $V_{OUT} = 1.8\text{V}$, See Figure 4		88.4		%
OUTPUT RIPPLE	Output Voltage Peak-to-Peak Ripple	$V_{IN} = 5\text{V}$, $V_{OUT} = 1.8\text{V}$, $I_{OUT} = 6\text{A}$, See Figure 5			34.4	mV

QUICK START PROCEDURE

Demonstration circuit 2065A makes it easy to set up to evaluate the performances of the LTC3815. Refer to Figure 2 for proper measurement equipment setup and follow the procedure below:

NOTE: When measuring the input or output voltage ripple, care must be taken to avoid a long ground lead on the oscilloscope probe. Measure the output voltage ripple by touching the probe tip directly across the COUT3. See Figure 3 for proper scope probe technique.

1. Make sure jumpers are in the following positions:

JUMPER	POSITION
RUN_STBY	ON
RUN_MSTR	ON
MODE	FCM
WP	OFF
MARGIN	NOM
VOUT SEL	1.8V

2. With power off, connect the input power supply to V_{IN} and GND. Connect active load to the output.

3. Turn on the power at the input.

NOTE: Make sure that the input voltage does not exceed 5.5V.

4. Check for the correct output voltage from VOUT to GND. $V_{OUT} = 1.8V \pm 1\%$ (1.782V ~ 1.818V)

NOTE: If there is no output, temporarily disconnect the load to make sure that the load is not set too high.

5. Once the proper output voltage is established, adjust the loads within the operating range and observe the output voltage regulation, ripple voltage, efficiency and other parameters.

6. Connect the dongle and control the output voltages from the GUI. See LTpowerPlay QUICK START session for details.

CONNECTING A PC TO DC2065A

You can use a PC to reconfigure the power management features of the LTC3815 such as: program output voltage margining, read back temperature, current and voltage,

check fault status etc. The DC1613A dongle may be plugged in regardless of whether or not V_{IN} is present. Dongle can be hot plugged.

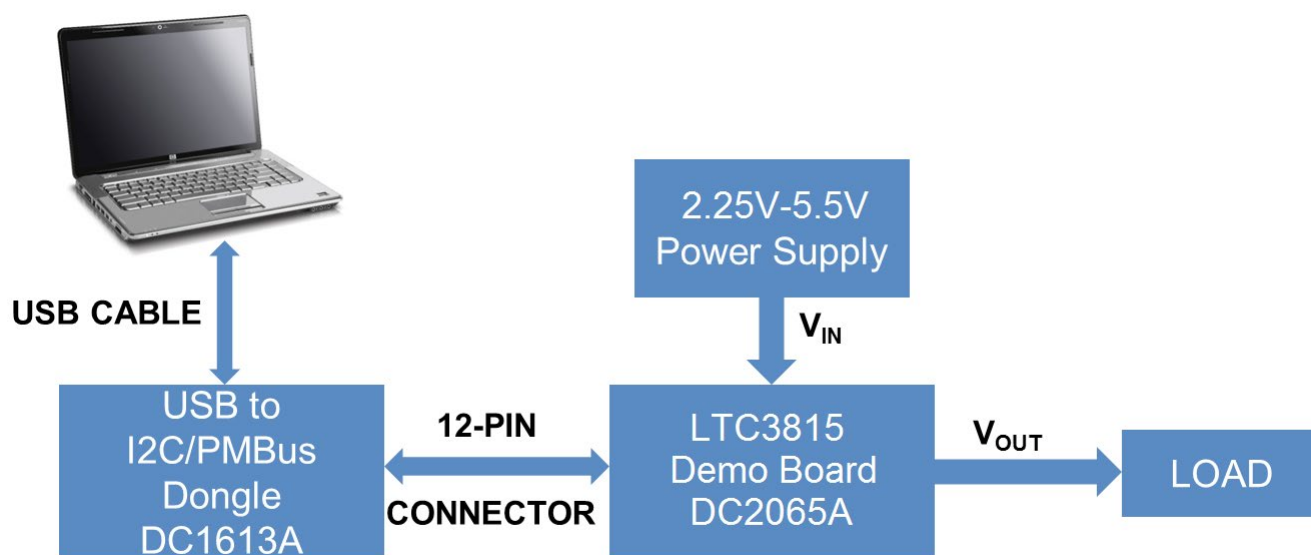


Figure 1. Demo Setup with PC

CONNECTING A PC TO DC2065A

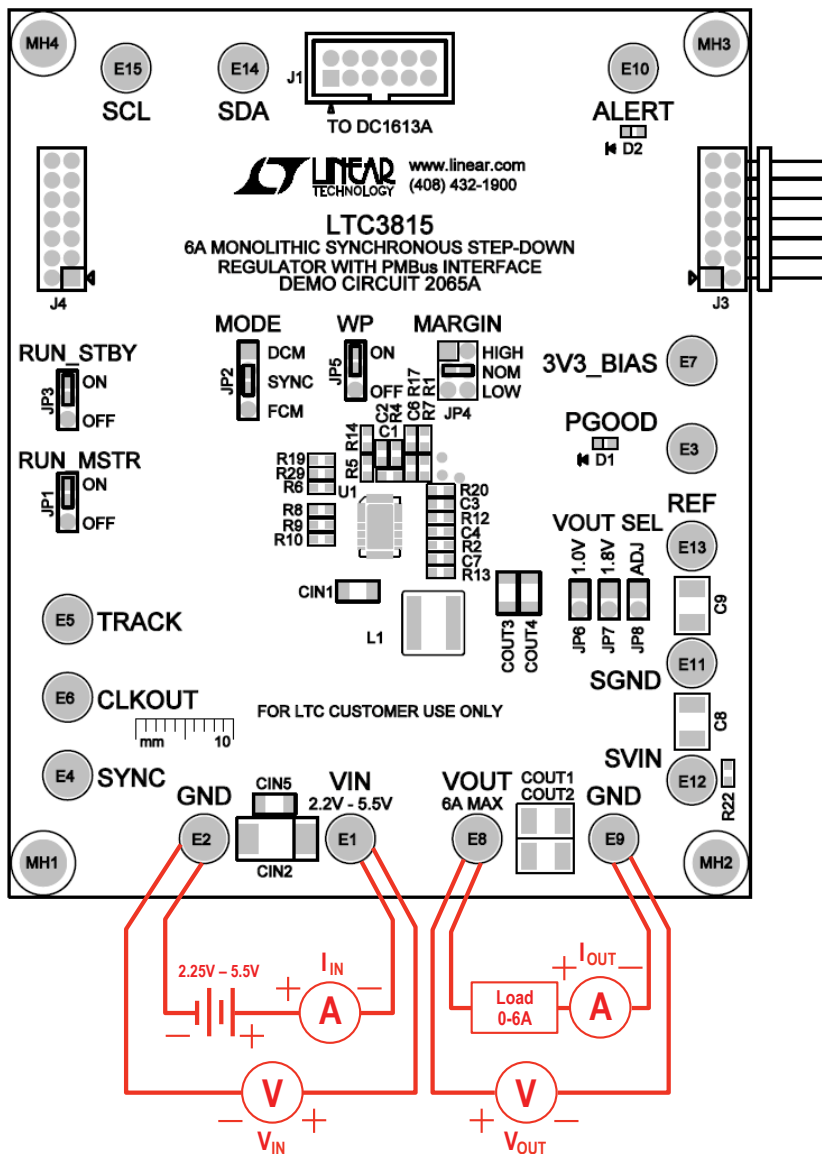


Figure 2. Power Test Setup for DC2065A

MEASURING OUTPUT RIPPLE VOLTAGE

An accurate ripple measurement may be performed by using the below configuration across C_{OUT}.

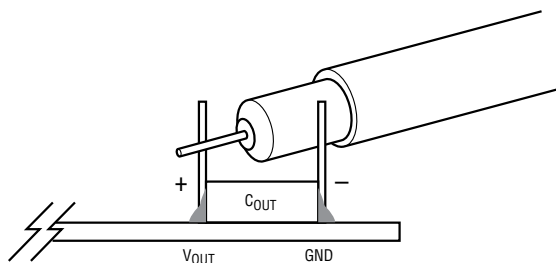
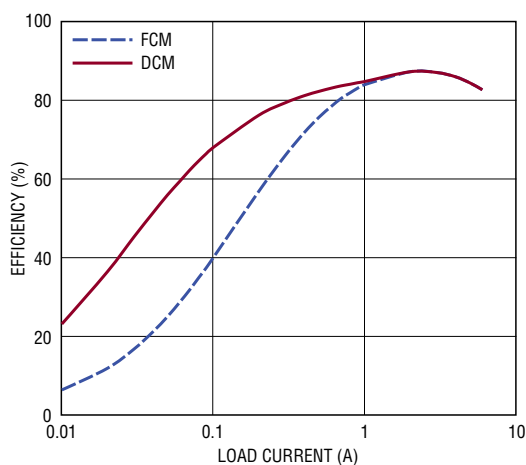
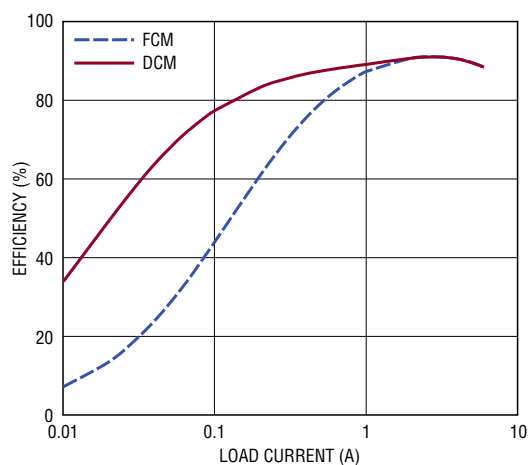


Figure 3. Measuring Output Voltage Ripple



(a) $V_{IN} = 5V$, $V_{OUT} = 1V$, $F_{SW} = 1MHz$



(b) $V_{IN} = 5V$, $V_{OUT} = 1.8V$, $F_{SW} = 1MHz$

Figure 4. Typical Efficiency Curves of DC2065A

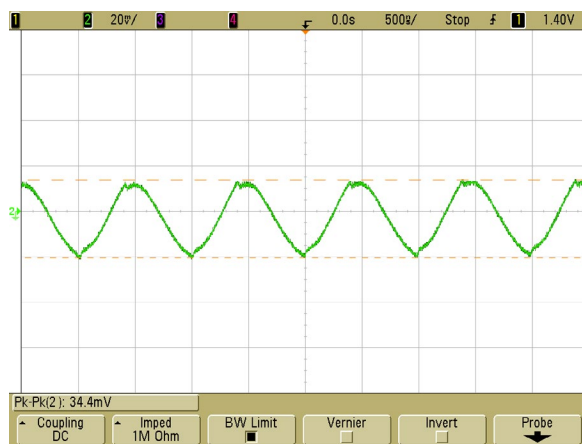


Figure 5. Output Ripple of DC2065A, $V_{IN} = 5V$, $V_{OUT} = 1.8V$, $I_{OUT} = 6A$, $F_{SW} = 1MHz$

LTpowerPlay SOFTWARE GUI

LTpowerPlay is a powerful Windows based development environment that supports Linear Technology power system management ICs, including the LTC3880, LTC3883, LTC3882, LTC3815, LTC2974 and LTC2978. The software supports a variety of different tasks. You can use LTpowerPlay to evaluate Linear Technology ICs by connecting to a demo board system. LTpowerPlay can also be used in an offline mode (with no hardware present) in order to build a multichip configuration file that can be saved and reloaded at a later time. LTpowerPlay provides unprecedented diagnostic and debug features. It becomes a valuable diagnostic tool during board bring-up to program or tweak the power management scheme in

a system, or to diagnose power issues when bringing up rails. LTpowerPlay utilizes the DC1613A USB-to-SMBus controller to communicate with one of many potential targets, including the LTC3815's DC2065A demo system, or a customer board. The software also provides an automatic update feature to keep the software current with the latest set of device drivers and documentation. The LTpowerPlay software can be downloaded from:

<http://linear.com/ltpowerplay>

To access technical support documents for LTC Digital Power Products visit Help. View online help on the LTpowerPlay menu.

LTpowerPlay SOFTWARE GUI

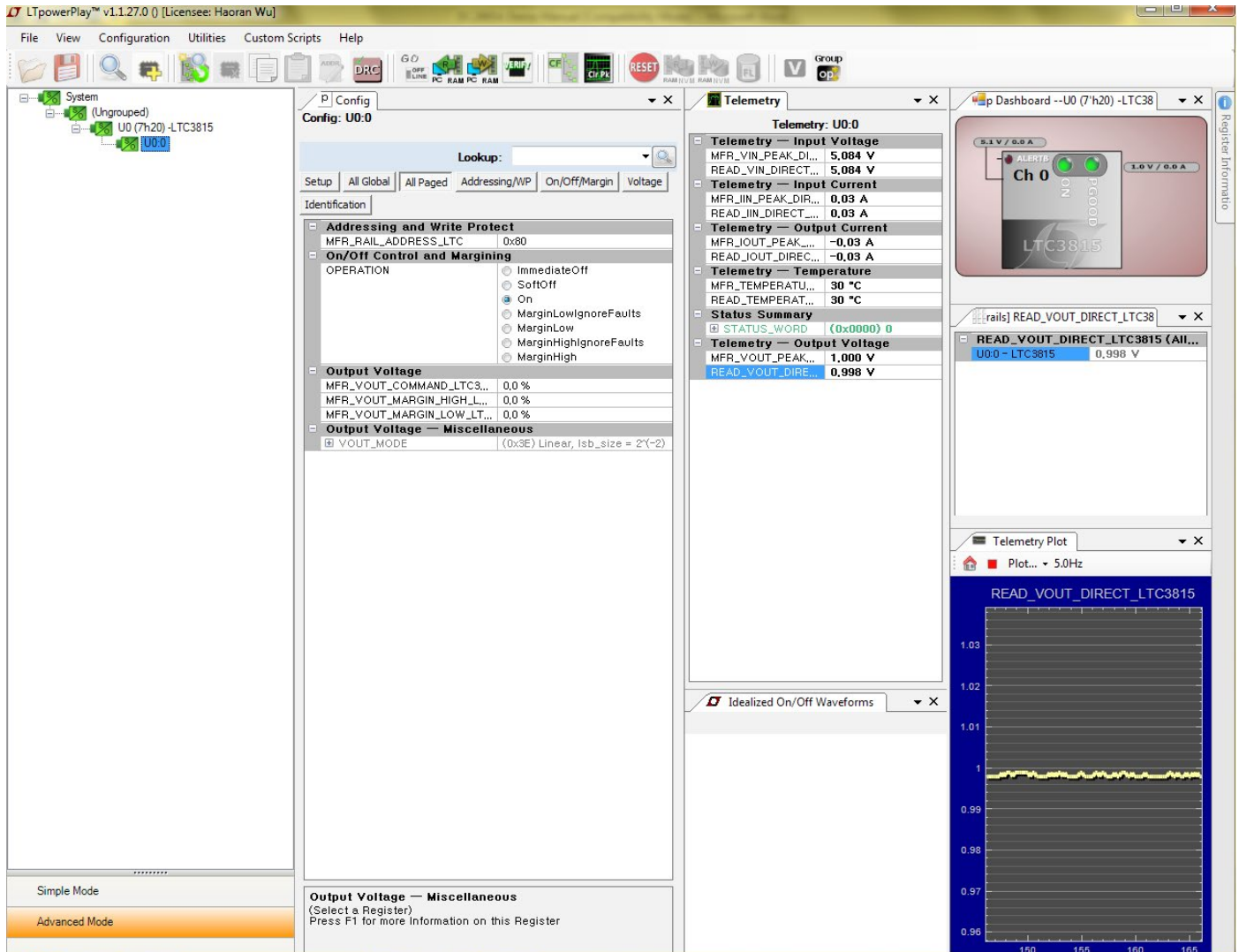


Figure 6. LTpowerPlay Main Interface

LTpowerPlay QUICK START PROCEDURE

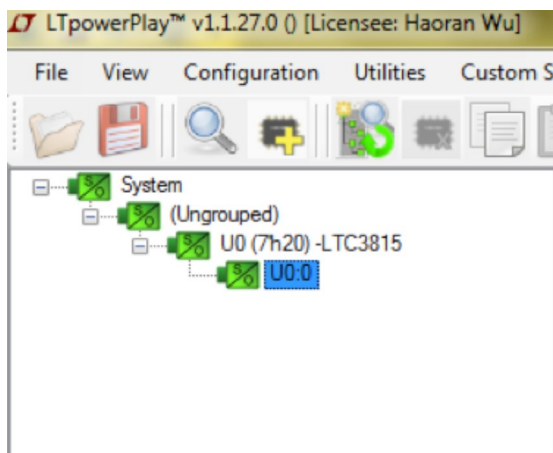
The following procedure describes how to use LTpowerPlay to monitor and change the settings of LTC3815.

1. Download and install the LTpowerPlay GUI:

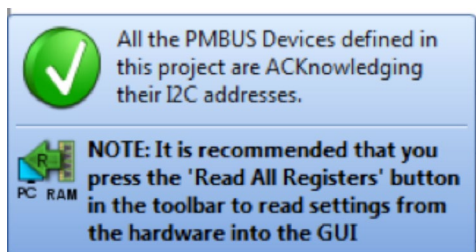
<http://linear.com/ltpowerplay>

2. Launch the LTpowerPlay GUI.

a. The GUI should automatically identify the DC2065A. The system tree on the left hand side should look like this:



b. A blue message box shows for a few seconds in the lower left hand corner, confirming that the LTC3815 is communicating:

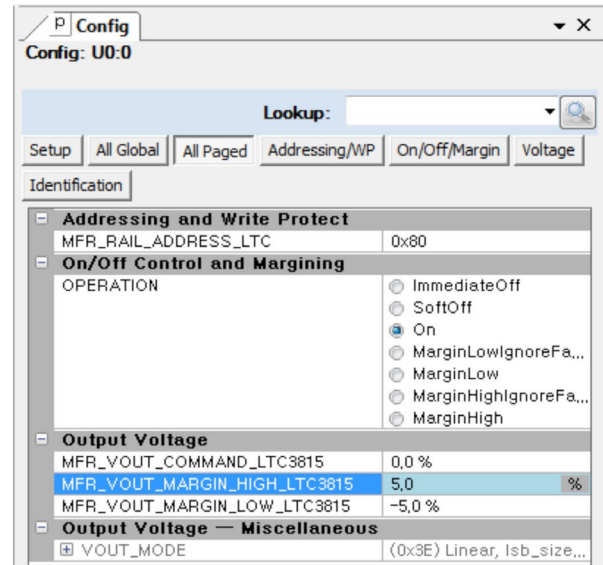


c. In the Toolbar, click the R (RAM to PC) icon to read the RAM from the LTC3815. This reads the configuration from the RAM of LTC3815 and loads it into the GUI.



d. If you want to change the MarginHigh and/or Margin/Low to different values (defaults are 0%), like +5% and/or -5%. In the Config tab, type 0.5 in the

MFR_VOUT_MARGIN_HIGH_LTC3815 (and/or -0.5 in the MFR_VOUT_MARGIN_HIGH_LTC3815 box), like this:



Then, click the W (PC to RAM) icon to write these register values to the LTC3815.



If the write is successful, you will see the following message:

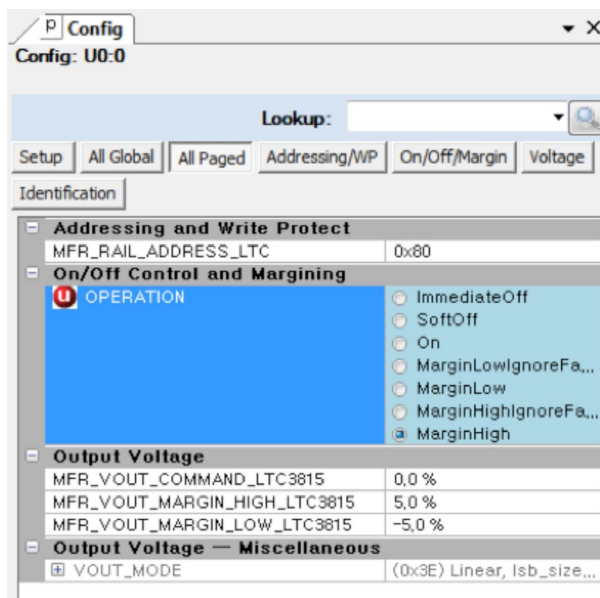


e. You can save the changes into the NVM. In the toolbar, click RAM to NVM button, as following:

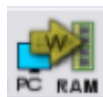


LTpowerPlay QUICK START PROCEDURE

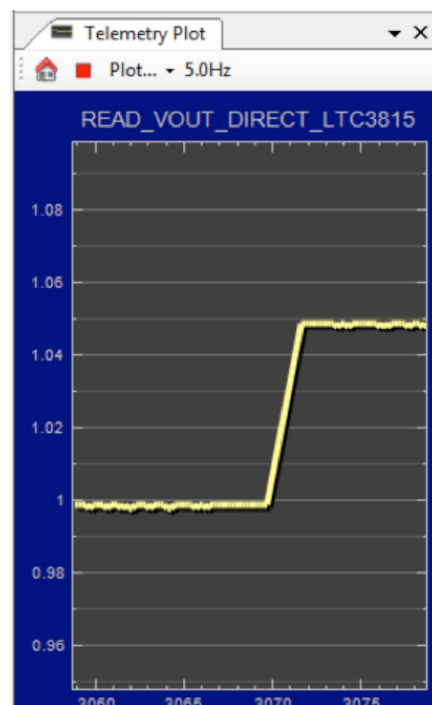
f. To margin VOUT to the set margin high value, you can either switch the MARGIN jumper on DC2065A board, or change OPERATION to be MarginHigh through LTpowerPlay, like this:



Then, click the W (PC to RAM) icon to write these register values to the LTC3815.



If the write is successful, you will see the output voltage jumps to 1.05V from the telemetry plot:



g. Save the demo board configuration to a (*.proj) file. Click the Save icon and save the file. Name it whatever you want.

DEMO MANUAL DC2065A

PARTS LIST

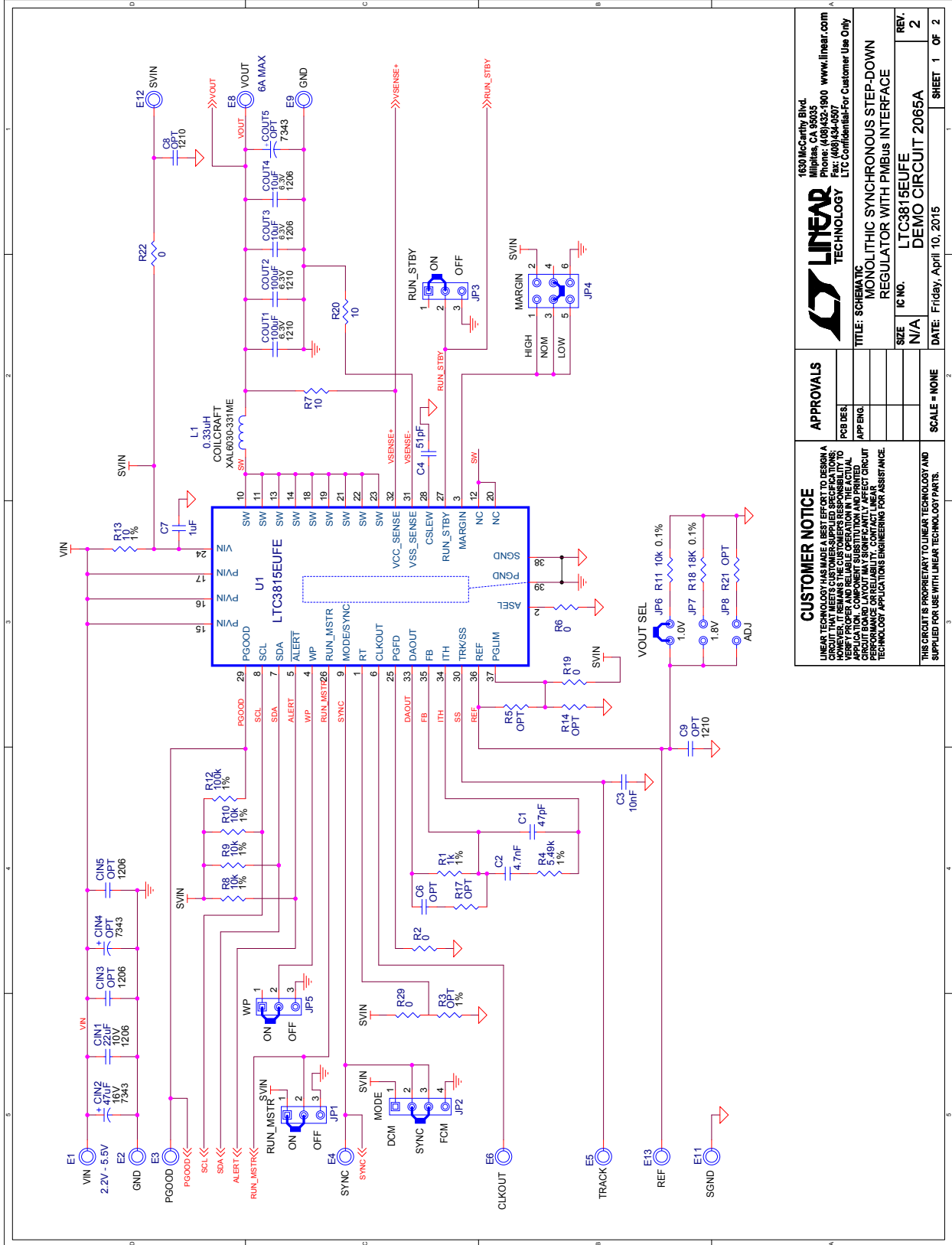
ITEM	QTY	REFERENCE	PART DESCRIPTION	MANUFACTURER/PART NUMBER
Required Circuit Components				
1	1	CIN1	CAP, 1206 22 μ F 20% 10V X5R	TDK C3216X5R1A226M
2	1	CIN2	CAP, 7343 47 μ F 20% 16V POSCAP	PANASONIC 16TQC47MW
3	2	COUT1, COUT2	CAP, 1210 100 μ F 20% 6.3V X5R	MURATA GRM32ER60J107ME20
4	2	COUT3, COUT4	CAP, 1206 10 μ F 10% 6.3V X5R	MURATA GRM31CR60J106K01L
5	1	C1	CAP, 0603 47pF 5% 50V NPO	AVX 06035A470JAT2A
6	1	C2	0603 4.7nF 10% 50V X7R	AVX 06035C472KAT2A
7	1	C3	CAP, 0603 10nF 10% 25V X7R	AVX 06033C103KAT2A
8	1	C4	CAP, 0603 51pF 5% 50V NPO	AVX 06035A510JAT
9	1	C5	CAP, 0603 100nF 10% 50V X7R	AVX 06035C104KAT2A
10	1	C7	CAP, 0603 1 μ F 20% 25V X5R	AVX 06033D105KAT2A
11	1	D1	LED, 0603 GREEN	OSRAM LG L29K-G2J1-24-Z
12	1	D2	LED, 0603 RED	OSRAM LS L29K-H1J2-1-Z
13	1	L1	IND, 0.33 μ H	COILCRAFT XAL6030-331ME
14	1	Q1	XSTR, N-CHANNEL DMOS FET	VISHAY SI2365EDS1-GE3
15	1	Q2	XSTR, N-CHANNEL DMOS FET	FAIRCHILD 2N7002
16	1	R1	RES, 0603 1k Ω 1% 1/10W	VISHAY CRCW06031K00FKEA
17	5	R2, R6, R19, R22, R29	RES, 0603 0 Ω JUMPER	VISHAY CRCW06030000Z0EA
18	1	R4	RES, 0603 5.49k Ω 1% 1/10W	VISHAY CRCW06035K49FKEA
19	3	R7, R13, R20	RES, 0603 10 Ω 1% 1/10W	VISHAY CRCW060310R0FKEA
20	3	R8, R9, R10	RES, 0603 10k Ω 1% 1/10W	VISHAY CRCW060310K0FKEA
21	1	R11	RES, 0603 10k Ω 0.1% 0.1W	PANASONIC ERA3AEB103V
22	1	R12	RES, 0603 100k Ω 1% 1/10W	VISHAY CRCW0603100KFKEA
23	2	R15, R16	RES, 0603 4.99k Ω 1% 1/10W	VISHAY CRCW06034K99FKEA
24	1	R18	RES, 0603 18k Ω 0.1% 0.1W	PANASONIC ERA3AEB183V
25	1	R27	RES, 0603 200 Ω 5% 1/10W	VISHAY CRCW0603200RJNEA
26	1	R28	RES, 0603 127 Ω 1% 1/10W	VISHAY CRCW0603127RFKEA
27	1	U1	IC, LTC3815EUFE	LINEAR TECHNOLOGY LTC3815EUFE#PBF
28	1	U2	IC, 24LC025-I/ST	MICROCHIP 24LC025-I/ST
Additional Demo Board Circuit Components				
1	0	CIN3, CIN5	CAP, 1206 OPTION	OPTION
2	0	CIN4	CAP, 7343 OPTION	OPTION
3	0	COUT5	CAP, 7343 220 μ F 20% 10V POSCAP OPTION	PANASONIC 10TPE220ML OPTION
4	0	C6	CAP, 0603 OPTION	OPTION
5	0	C8, C9	CAP, 1210 OPTION	OPTION
6	0	R3, R5, R14, R17, R21, R23, R24, R25, R26,	RES, 0603 OPTION	OPTION

PARTS LIST

ITEM	QTY	REFERENCE	PART DESCRIPTION	MANUFACTURER/PART NUMBER
Hardware: For Demo Board Only				
1	15	E1, E2, E3, E4, E5, E6, E7, E8, E9, E10, E11, E12, E13, E14, E15	TURRET	MILL-MAX 2501-2-00-80-00-00-07-0
2	3	JP1, JP3, JP5	HEADER, 3PIN, 2mm	SULLINS, NRPN031PAEN-RC
3	1	JP2	HEADER, 4PIN, 2mm	SULLINS, NRPN041PAEN-RC
4	1	JP4	HEADER, 3PIN, DBL ROW 2mm	SULLINS, NRPN032PAEN-M456RC
5	3	JP6, JP7, JP8	HEADER, 2PIN, 2mm	SULLINS, NRPN021PAEN-RC
6	1	J1	HEADER, 12PIN 2mm STR DL	FCI 98414-G06-12ULF
7	1	J3	CONN, HEADER, 2X7, 2mm, R/A (M)	MOLEX 87760-1416
8	1	J4	CONN, HEADER, 2X7, 2mm, R/A (F)	SULLINSINC NPPN072FJFN-RC
9	4	MH1, MH2, MH3, MH4	STANDOFF, SNAP ON	KEYSTONE_8831
10	6	XJP1, XJP2, XJP3, XJP4, XJP5,	SHUNT, 2mm	SAMTEC 2SN-BK-G

DEMO MANUAL DC2065A

SCHEMATIC DIAGRAM



CUSTOMER NOTICE		APPROVALS	
LINEAR TECHNOLOGY HAS MADE A BEST EFFORT TO DESIGN A BOARD THAT WILL BE ASSEMBLED AND OPERATED AS SHOWN. HOWEVER, IT REMAINS THE CUSTOMER'S RESPONSIBILITY TO VERIFY PROPER AND RELIABLE OPERATION IN THE ACTUAL APPLICATION. LINEAR TECHNOLOGY CANNOT BE HELD RESPONSIBLE FOR PERFORMANCE OR RELIABILITY. CONTACT LINEAR TECHNOLOGY APPLICATIONS ENGINEERING FOR ASSISTANCE.		RCS DESG APP ENG	
THIS CIRCUIT IS PROPRIETARY TO LINEAR TECHNOLOGY AND SUPPLIED FOR USE WITH LINEAR TECHNOLOGY PARTS.		SCALE = NONE	
LINEAR TECHNOLOGY 1630 McCarthy Blvd. Milpitas, CA 95035 Phone: (408)432-1900 www.linear.com Fax: (408)434-0907 LTC Confidential-For Customer Use Only		TITLE: SCHEMATIC MONOLITHIC SYNCHRONOUS STEP-DOWN REGULATOR WITH PMBUS INTERFACE	
SIZE	IC NO.	DATE	SHEET 1 OF 2
N/A	LTC3815EUF6	Friday, April 10, 2015	
DEMO CIRCUIT 2065A		REV. 2	

DEMO MANUAL DC2065A

DEMONSTRATION BOARD IMPORTANT NOTICE

Linear Technology Corporation (LTC) provides the enclosed product(s) under the following **AS IS** conditions:

This demonstration board (DEMO BOARD) kit being sold or provided by Linear Technology is intended for use for **ENGINEERING DEVELOPMENT OR EVALUATION PURPOSES ONLY** and is not provided by LTC for commercial use. As such, the DEMO BOARD herein may not be complete in terms of required design-, marketing-, and/or manufacturing-related protective considerations, including but not limited to product safety measures typically found in finished commercial goods. As a prototype, this product does not fall within the scope of the European Union directive on electromagnetic compatibility and therefore may or may not meet the technical requirements of the directive, or other regulations.

If this evaluation kit does not meet the specifications recited in the DEMO BOARD manual the kit may be returned within 30 days from the date of delivery for a full refund. **THE FOREGOING WARRANTY IS THE EXCLUSIVE WARRANTY MADE BY THE SELLER TO BUYER AND IS IN LIEU OF ALL OTHER WARRANTIES, EXPRESSED, IMPLIED, OR STATUTORY, INCLUDING ANY WARRANTY OF MERCHANTABILITY OR FITNESS FOR ANY PARTICULAR PURPOSE. EXCEPT TO THE EXTENT OF THIS INDEMNITY, NEITHER PARTY SHALL BE LIABLE TO THE OTHER FOR ANY INDIRECT, SPECIAL, INCIDENTAL, OR CONSEQUENTIAL DAMAGES.**

The user assumes all responsibility and liability for proper and safe handling of the goods. Further, the user releases LTC from all claims arising from the handling or use of the goods. Due to the open construction of the product, it is the user's responsibility to take any and all appropriate precautions with regard to electrostatic discharge. Also be aware that the products herein may not be regulatory compliant or agency certified (FCC, UL, CE, etc.).

No License is granted under any patent right or other intellectual property whatsoever. **LTC assumes no liability for applications assistance, customer product design, software performance, or infringement of patents or any other intellectual property rights of any kind.**

LTC currently services a variety of customers for products around the world, and therefore this transaction **is not exclusive**.

Please read the DEMO BOARD manual prior to handling the product. Persons handling this product must have electronics training and observe good laboratory practice standards. **Common sense is encouraged.**

This notice contains important safety information about temperatures and voltages. For further safety concerns, please contact a LTC application engineer.

Mailing Address:

Linear Technology
1630 McCarthy Blvd.
Milpitas, CA 95035

Copyright © 2004, Linear Technology Corporation