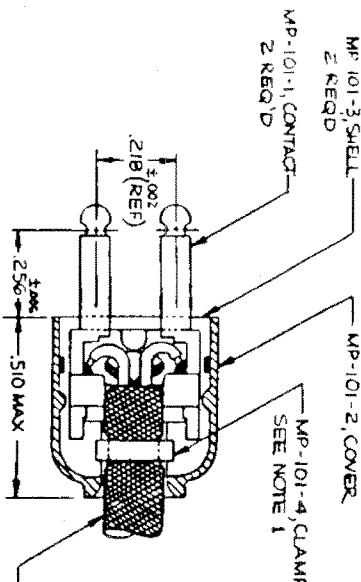
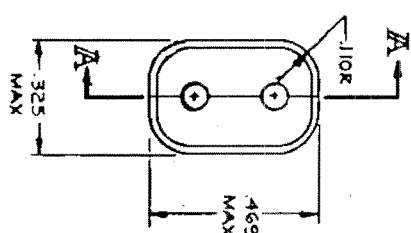
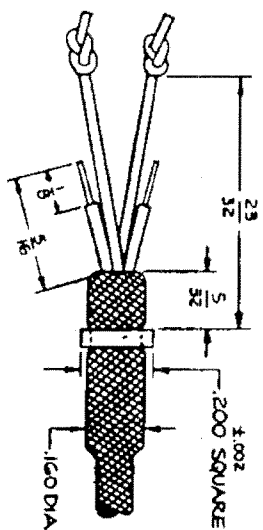


SUGGESTED LEAD PRESS

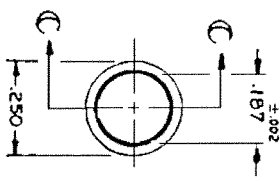
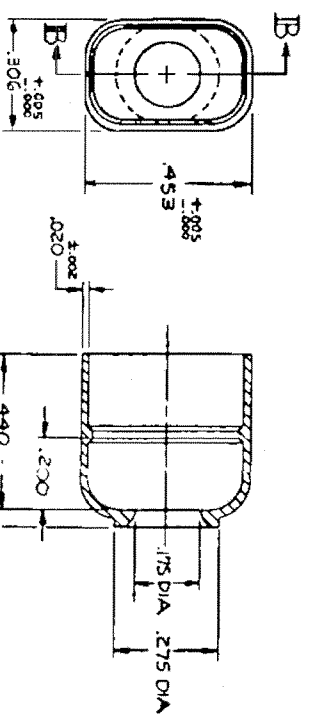
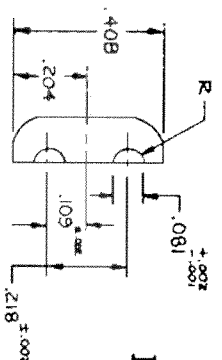
OPTION 1 (SHOWN)-ONE STAY CORD IS THREADED THROUGH EACH SHELL AND ITS KNOT IS PLACED IN THE HOLE IN THE OTHER SHELL.
 OPTION 2 - BOTH STAY CORDS ARE THREADED THROUGH THE SAME SHELL AND ARE TIED BY A SQUARE KNOT OVER THE HOLE IN THE OTHER SHELL. THE CORDS ARE THEN TRIMMED.
 NOTE: VARNISH ALL KNOTS.



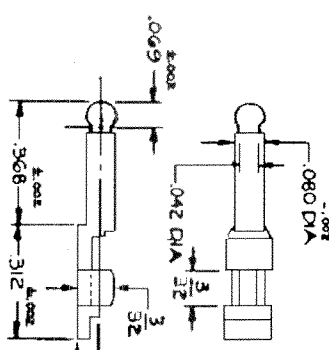
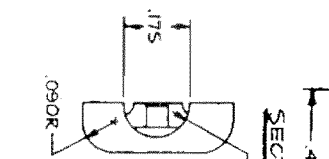
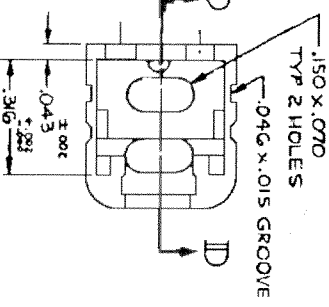
- NOTES:
1. PLUG IS SUPPLIED UNASSEMBLED. ASSEMBLED POSITION ON CORD IS SHOWN.
 2. MP-101-4 CLAMP IS SHOWN AS IT APPEARS AFTER CRIMPING AROUND CORD.
 3. VARIATIONS OF DIMENSIONS OF COMPONENT PARTS THAT DO NOT AFFECT OVERALL DIMENSIONS OF ASSEMBLED PLUG ARE PERMISSIBLE.
 4. STAY CORDS ARE SHOWN AS DESCRIBED IN OPTION 2.



SHELL - MP-101-2
 MATERIAL: NYLON PER MIL-M-20693,
 TYPE I, COLOR BLACK

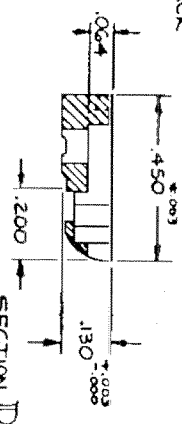


CLAMP - MP-101-4
 MATERIAL: BRASS PER
 QQ-B-626 COMP 22 1/2 HD.
 HEAT TREAT: 1HR @ 700°F
 FINISH: ZINC PLATE



CONTACT - MP-101-1
 FINISH: NICKEL PLATE, SPEC
 QQ-N-290, CLASS 1, GRADE G.
 NOTE: DIMS SHOWN ARE BEFORE PLATING.
 MATERIAL: BERYL COPPER ALLOY M9175,
 SPEC MIL-C-46087 TEMP AT.

INSERT - MP-101-3
 MATERIAL: NYLON PER MIL-M-20693,
 TYPE I, COLOR BLACK



K	CHG PARTING	HR	DATE	BY	REVISION
J	INSERT CLAMP TO HOLD	1/4	10/30/63	9/30/63	1
I	U-173 MP-101-3 SHELL	1/4	10/30/63	9/30/63	1
H	U-173 MP-101-3 SHELL	1/4	10/30/63	9/30/63	1
G	MS MIL-M-20693	1/4	10/30/63	9/30/63	1
F	MS MIL-F-17091	1/4	10/30/63	9/30/63	1
E	REVISION NO CHANGES	1/4	10/30/63	9/30/63	1
D	REVISION NO CHANGES	1/4	10/30/63	9/30/63	1
C	REVISION NO CHANGES	1/4	10/30/63	9/30/63	1
B	REVISION NO CHANGES	1/4	10/30/63	9/30/63	1
A	REVISION NO CHANGES	1/4	10/30/63	9/30/63	1

NEXUS
 STANDARD CORN
 MICROPHONE PLUG
 U-173/U
 SCALE 4:1
 MP-101