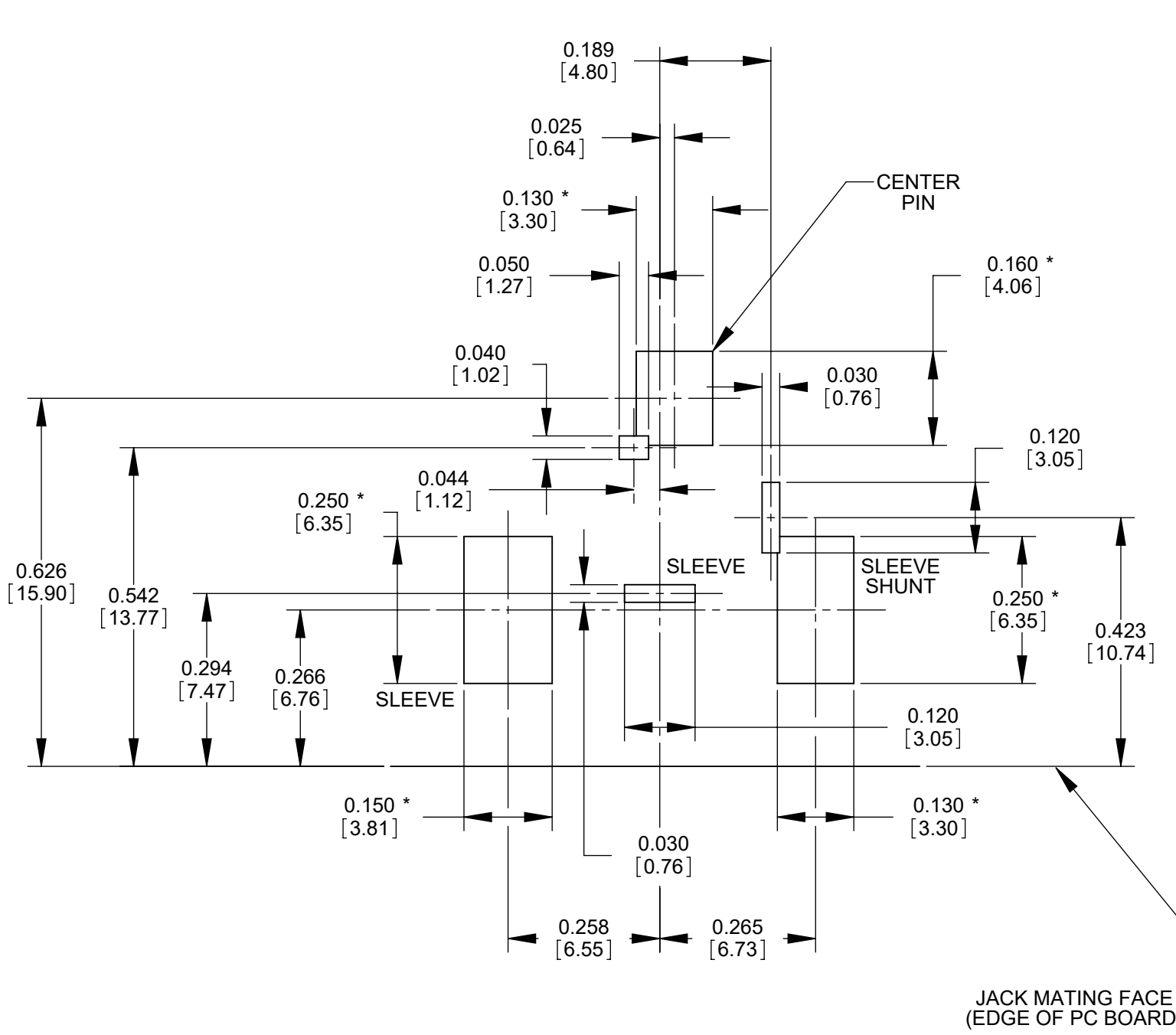
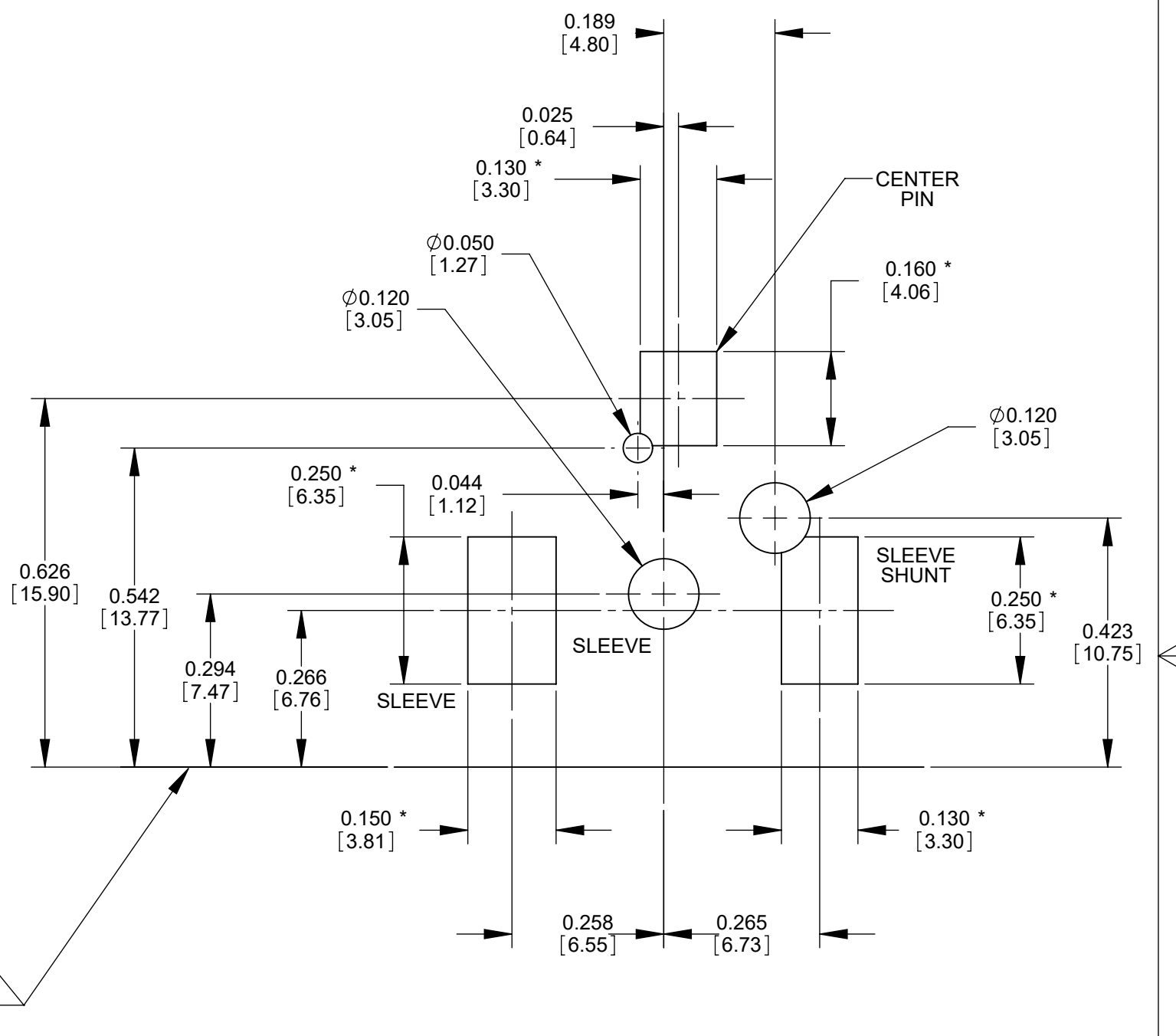


**CUSTOMER DRAWING**

					STAR SYMBOL DENOTES CRITICAL DIMENSION	THIS DRAWING DESCRIBES A DESIGN CONSIDERED PROPRIETARY IN NATURE, DEVELOPED AND MANUFACTURED BY SWITCHCRAFT INC. AND IS RELEASED ON A CONFIDENTIAL BASIS FOR IDENTIFICATION PURPOSES ONLY.					
					UNLESS OTHERWISE SPECIFIED	SIZE	WIDTH	MULT	LBS/M	TEMPER	
					1. ALL DIMENSIONS IN INCHES	FINISH				MATERIAL	
					- TWO PLACE DECIMALS ±0.02	SPEC No.				SPEC No.	
					- THREE PLACE DECIMALS ±0.005	FIRST USED ON		SCALE		Switchcraft®	
						4:1					
B	28503	5/18/22	TJK	TJK	DATE DRAWN	BY	CHKD	APVD	SHEET 1 OF 2		
A	25775	1/22/07	BS	TJK	1/17/07	BS	TJK	TJK	PART No.		
REV	ECO NUMBER	DATE	BY	APVD	NAME				REV		
REVISIONS					DO NOT SCALE DRAWING				RASH722BK		B
					LOCKING POWER JACK, SH, Ø0.08 [2.0mm], RoHS						



**RECOMMENDED PC BOARD LAYOUT  
(COMPONENT SIDE)**



**ALTERNATE PC BOARD LAYOUT  
(COMPONENT SIDE)**

JACK MATING FACE  
(EDGE OF PC BOARD)

NOTE: \* SURFACE MOUNT PADS.

**CUSTOMER DRAWING**

SCALE 4:1	<b>Switchcraft</b> <sup>®</sup>
DATE DRAWN 08/20/08	
DRAWN BY BS	TOOL No. RASH722BK
	SHEET 2 OF 2
	REV <b>B</b>