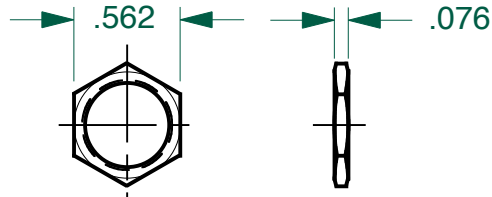
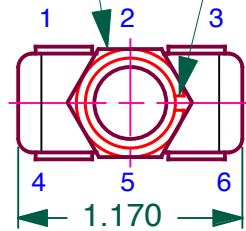


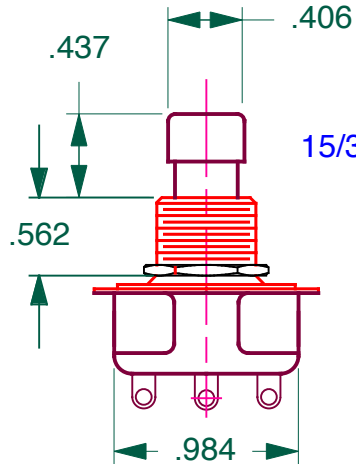
DO NOT SCALE DRAWING WORK TO FIGURES

9/16 HEX NUT
(FURNISHED ASSEMBLY)

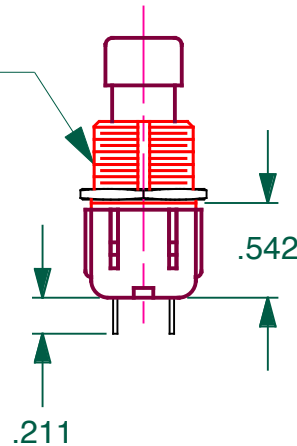
$\pm .005$ WIDE X $\pm .005$ DP
KEYWAY



2ND HEX NUT BULK



15/32 - 32NS-2



| | | |
|---------------------------|-----------|------------|
| DWG NO. 316-B-PP/2 HEX | | REV. 01 |
| LET | REVISIONS | DATE |
| 01 | RELEASED | 11-21-08 |

RATING: UL , CSA

1A — 250 V
3A — 125 V
A.C. - D.C.

OPERATES:

POSITIONS OF PLUNGER

PUSH: — ON T1 TO 2
T4 TO 5

PUSH: — ON T2 TO 3
T5 TO 6

NOTES:

1. BUSHING, PLUNGER, RING AND HEX NUTS ARE NICKEL PLATED

DIMENSIONS SUBJECT TO CHANGE WITHOUT NOTICE

FINISH _____

CARLINGSWITCH, INC.
PLAINVILLE, CT

PROPRIETARY NOTE:

NOTICE TO ALL PERSONS RECEIVING THIS DRAWING. THIS DOCUMENT IS THE PROPERTY OF CARLINGSWITCH, INC. AND IS NOT TO BE DISCLOSED, REPRODUCED IN WHOLE OR IN PART OR USED FOR MANUFACTURING PURPOSES BY ANYONE WITHOUT THE CONSENT OF CARLINGSWITCH, INC.

UNSPECIFIED TOLERANCES

FRAC. $\pm 1/64$ X.XXX $\pm .015$
ANGLES $\pm 1^\circ$

PROJECTIONS



DIMENSIONS
IN [mm]

| | |
|-----------------------------|-------------------------|
| TOOL NO. _____ | REV _____ |
| DR BY KRAMARZ | DATE 11-21-08 |
| CHK BY P KOERNER | DATE 12-3-08 |
| APPD BY D DAMIATA | DATE 12-3-08 |

| | | | |
|-----------------------------------|----------------------------------|-------------------|----------------|
| TITLE 316 SERIES SWITCH | | | |
| SIZE A | DWG NO. 316-B-PP/2 HEX | REV. 01 | |
| USED ON _____ | SCALE: NONE | SHT 1 | OF 1 |